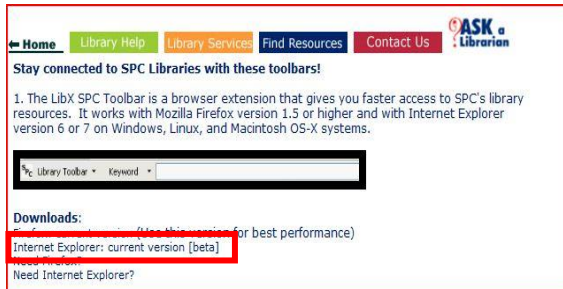
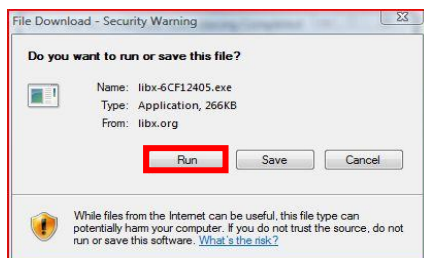


# Installing the LibX Library Toolbar in Internet Explorer 7

1. Visit <http://www.spcollege.edu/SPG/WSPCL/toolbar.html> and click on the **Internet Explorer: current version [beta]** link.



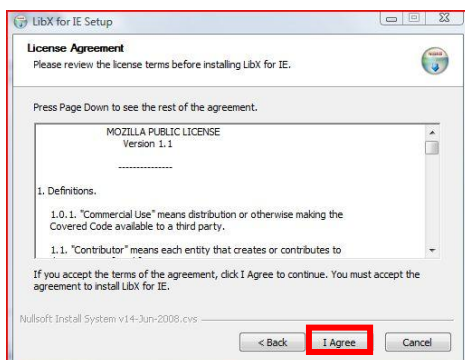
2. Click the **Run** button.



3. This application is safe, so click on the **Run** button again.



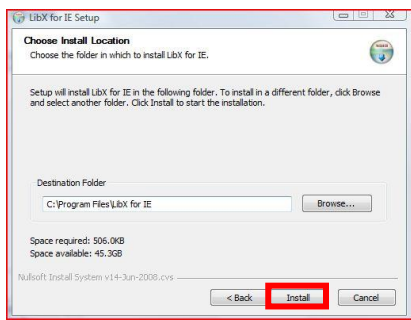
4. Review the license agreement and then click on the **I Agree** button.



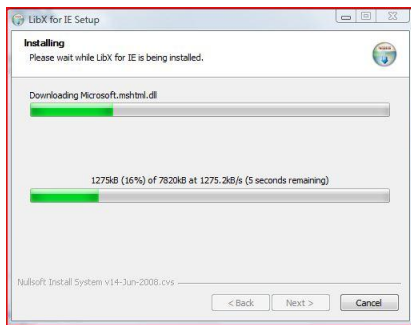
5. Click the **Next >** button.



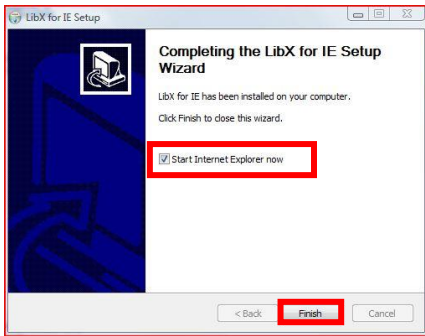
6. The default install location is fine so click on the **Install** button.



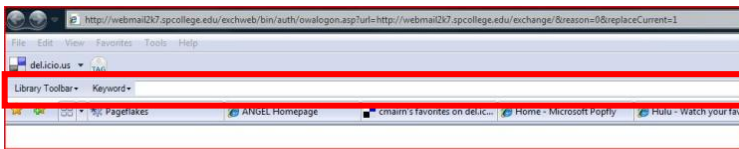
7. The LibX toolbar will start installing.



8. The installation is now complete. Place a checkmark next to **“Start Internet Explorer now”** and then click on the **Finish** button.



9. Once Internet Explorer restarts the Library Toolbar will display. (**Note:** the entire toolbar is not displayed in this screenshot).



10. Questions? Please visit <http://www.spcollege.edu/SPG/WSPCL/toolbar.html> for tutorials explaining how to use the toolbar. Or you can contact Chad Mairn at [mairn.chad@spcollege.edu](mailto:mairn.chad@spcollege.edu) or 727.341.7181.