

## College receives two major grants to train teachers, nurses

SPC has received two SUCCEED Florida! grants, one to expand its Educator Preparation Institute (EPI) program and the other to renovate nursing classrooms and expand SPC's degrees in Nursing.

The \$274,947 EPI teaching grant will be used to attract people with bachelor's degrees outside of education and prepare them to become teachers.

"The grant will help us respond to Florida's teacher shortage by expanding our program," said Sally Naylor, dean of the College of Education. "The state is looking for teachers in critical shortage areas."

SPC offers several programs for prospective teachers. There are critical shortages in Exceptional Student Education, Secondary Science and Secondary Mathematics.

Students who complete one-year programs in Elementary or Exceptional Student Education also become certified in English for Speakers of Other Languages (ESOL), another critical shortage area.

The \$263,578 Nursing grant will

help SPC produce more nurses with associate's and bachelor's degrees.

"As most people know, there's an increasing shortage of nurses, and anything that decreases that shortage

by increasing the capacity of Nursing programs is a good thing," said Sandra Wise, provost of SPC's Health Education Center. "This grant will provide the opportunity for us to increase that capacity."

The money, she said, will be used to renovate space at the Caruth Health Education Center making it more efficient and able to serve more students. Some of the money also will be used for technology development — programs to help faculty become more comfortable with patient simulators.

SUCCEED Florida! grants were created by the Florida Legislature in 2005. They help Florida's public and private high schools, colleges and universities expand or create new career academies and programs in Nursing Education and teacher certification.



Sally Naylor



Sandra Wise

## SPC a leader in medical device industry education

The college will offer classes in January to support the medical device industry — companies that manufacture everything from pacemakers to dialysis machines to heart monitoring devices.

For the past year, SPC has been one of eight community colleges in the country developing curriculum through the Medical Device Industry

Education Consortium (MDIEC), a group comprised of college representatives as well as 15 industry partners. The consortium was formed thanks to a National Science Foundation grant that began in October 2006.

Michael Sullivan, MDIEC's principal investigator and SPC's

See *MEDICAL* Page 2

## SPC marketers scour campuses for students with stories to tell

SPC videographers, photographers and marketing professionals visited four campuses last week, meeting students and searching for stories that colorfully illustrate their college experiences.

Some of those stories will find their way into a number of SPC marketing efforts — billboards, brochures, video presentations and online content.

"Because of its range of educational offerings and the great diversity of its student body, St. Petersburg College is a great source of inspirational stories of all kinds," said Mary Hearn, SPC's marketing coordinator. "Of course, the best stories come from the students themselves."

The team visited St. Petersburg/Gibbs, Seminole, Clearwater and Tarpon Springs. They had put up posters in advance, asking students with stories to tell to come forward, and nearly 90 people did exactly that. The stories included elements of hardship as well as the overcoming of

See *MARKETERS* Page 3

**“Quoteworthy”**

---

*“Wise and prudent men - intelligent conservatives - have long known that in a changing world worthy institutions can be conserved only by adjusting them to the changing times.”*

— Franklin D. Roosevelt

---

**Irene McDade  
HEC**

## Basketball teams open play this weekend

The men's and women's basketball teams open their seasons this weekend.

The men will be at home tonight at 7 against Florida Memorial College and the women will travel to Seminole Community College Saturday afternoon for a game at 4. The women play their first home game of the season Tuesday at 6 p.m. in the St. Petersburg/Gibbs Campus.

The men have high expectations after advancing to the state semifinals last year. The men play in the Suncoast Conference and play their first conference game of the season Jan. 5.

The women failed to earn a trip to the state tournament last year but are hopeful of going this year. The

team is young and could face a tough challenge in the Southern Conference. The first conference game of the year is Jan. 9.

The college's volleyball team began play in the state tournament at Polk Community College in Winter Haven on Thursday. The double-elimination tournament ends Saturday. If SPC is going to earn a trip to the national tournament it must beat Pasco-Hernando CC, Hillsborough CC and the Gulf Coast CC.

All home basketball games are played at the SP/G gymnasium, 6605 Fifth Ave. N.

To keep up with all of the SPC athletic teams, visit [www.spcollege.edu/athletics](http://www.spcollege.edu/athletics).

## Medical *continued from Page 1*

director of the Entrepreneurship/Medical Initiative, said the effort is aimed at providing trained workers to the growing medical device industry.

"This is a national effort and we are the lead college," Sullivan said. "Florida is very strong in medical manufacturing – second only to California."

Bill Mazurek, director of operations for ConMed/Linvatec and chairman of the MDIEC Board of Advisors said, "The NSF MDIEC project is helping the medical device industry achieve a world class workforce through targeted education." ConMed/Linvatec is an industry partner.

MDIEC was formed when SPC received a U.S. Department of Education grant to determine the need nationally for education curricula to support the medical device manufacturing field.

"We surveyed across the country with partner colleges to see what the industry's true educational needs were," Sullivan said. "The results were what we built our NSF proposal around."

Survey respondents described needs in the areas of quality systems,

documentation and clinical data management, product design and development, project management and regulatory affairs.

As part of the grant, SPC developed courses in Regulatory Affairs, Product Design and Development and Risk Management. These courses will be offered at SPC starting in January. They may be applied to an Associate in Science degree in Engineering Technology.

Besides SPC, the other MDIEC colleges include Anoka Ramsey Community College, Minnesota; Edmonds Community College, Wash.; Alexandria Technical College, Minn.; Benjamin Franklin Institute of Technology, Boston; Gateway Technical College, Wis.; North Orange County Community College District, Calif.; and Shoreline Community College, Wash..

In addition to ConMed Linvatec, other industry advisory board members include Beckman Coulter; Boston Scientific; Halkey-Roberts; Incisive Surgical; Medtronic; Minco; Northstar Neuroscience; Smith & Nephew; SonoSite; Spacelabs Medical; LifeScience Alley; MassMEDIC; and the Florida Medical Manufacturers Consortium.

## Music Festival planned for Nov. 10

The SPC ROCKS! Music Festival is Nov. 10 from noon to 6 p.m. at the gymnasium on the St. Petersburg/Gibbs Campus.

Five bands will participate: Too Little Too Late; This Transmission; Magic Shoppe; Feminist Assault; and A.N.D.Y.

Admission is \$8 in advance, or \$10 at the door. Proceeds will benefit the SPC Foundation, Inc. for SPC music scholarships. Tickets are available in Room 118 of the Humanities Building on the St. Petersburg/Gibbs Campus.

## *Employment Opportunities*

For job openings at the college, visit the Human Resources Web site at <http://www.spcollege.edu/central/hr/>.

St. Petersburg College is dedicated to the concept of equal opportunity. The college will not discriminate on the basis of race, color, religion, sex, age, national origin, or marital status, or against any qualified individual with disabilities, in its employment practices or in the admission and treatment of students. Recognizing that sexual harassment constitutes discrimination on the basis of sex and violates this rule, the college will not tolerate such conduct. Should you experience such behavior, please contact the director of EA/EO at (727) 341-3261; by mail at P.O. Box 13489, St. Petersburg, FL 33733-3489; or by e-mail at [ea\\_eo\\_director@spcollege.edu](mailto:ea_eo_director@spcollege.edu).

**Editor:** Mike O'Keeffe

**Graphic Designer:** Debbie Falgoust

**Writers:** Bill Frederick and Mike O'Keeffe

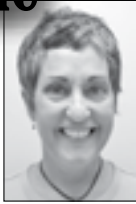
*Blue & White* is produced weekly by the St. Petersburg College Office of Institutional Advancement, to communicate administrative and staff information to college employees. Submissions should be received no later than Friday noon for publication the following Friday. Send by e-mail to [o'keeffe.mike@spcollege.edu](mailto:o'keeffe.mike@spcollege.edu) or send by campus mail to Institutional Advancement, EpiCenter – Services.

St. Petersburg College

**SPC**

*Excellence in education since 1927*

## Wellness update



Cathleen Shears

### Tips for healthy holiday eating

Health experts have observed that between Thanksgiving and New Year's Day most Americans gain two to seven pounds. If you would like to avoid holiday weight gain, and the negative health consequences of yearly weight gain, follow these tips:

- Don't overeat at family gatherings and social events, avoid not eating all day in anticipation of the feast and try to limit portion size.
- Limit extra calories from alcohol. For example, it would take more than 2,000 jumping jacks to burn off one 8-ounce glass of eggnog.
- On most days, set a time for exercise – 20 to 30 minutes per day of brisk walking or bike riding will help burn calories and keep your heart strong.
- Try substituting lower calorie ingredients in your holiday recipes. For example: low fat milk for whole milk and cream in eggnog, applesauce for oil in baked goods, and plain yogurt for sour cream.
- If a choice is to be made between the two — pecan pie and pumpkin pie — pumpkin is the healthier. One slice of pecan pie has 575 calories, 32 grams of fat. One slice of pumpkin pie has 320 calories, 17 grams of fat.
- At parties or office events, eat slowly and don't hover around the buffet table.
- If you are a stress eater, learn a stress-coping technique such as relaxation and deep breathing.
- Don't be tempted by all the holiday food offerings. Be selective and save your calories for foods you enjoy most.
- Balance and moderation are the keys to not feeling deprived and overwhelmed by food choices.
- Learn to recognize the healthier, less calorie-dense food choices such as fruits, vegetables, cold shrimp with cocktail sauce, skewered chicken, Sushi, cranberries, broth-based soups and lean meats.
- Eat less fried foods, heavy cream sauces, and fatty meats such as prime rib.

Join us for more on the topic by attending our November/December brown bag lunch series, Healthy Holiday Eating. To view the entire schedule of dates and campus locations, visit the Wellness at Work Web page at [www.spcollege.edu](http://www.spcollege.edu), click on Human Resources in the left-hand column, then "Wellness at Work" on the right and then scroll down to the Lunch and Learn November/December link.

College Wellness Coordinator Cathleen Shears' Wellness column appears weekly in the Blue & White.

## Flexible Spending Account (FSA) deadline to join or renew is Dec. 3

Want to give yourself a raise? Want to save tax money every paycheck?

Sign up for, or renew, your Flexible Spending Account, (FSA), by sending your completed form to Anh Nunag by Monday, Dec. 3. If you want to cancel your existing account, you must return your personalized form, or the form included in this edition of the *Blue & White*, indicating your cancellation for 2008, along with your signature and date. Send your form to: Human Resources, Anh Nunag, EpiServices Building.

The government allows you to sign up, renew, or cancel your FSA on a yearly basis. Thus, even if you already have a FSA, you still must complete a new form to re-enroll for a 2008 FSA account.

An FSA lets employees use a pre-tax payroll deduction to set aside up to \$5,000 for medical expenses, (including many over-the-counter items), and up to an additional \$5,000 for dependent-care expenses for children and adults. If you set aside money for adult day care, that

adult must, by IRS law, spend at least eight hours per day in your home.

All budgeted employees may sign up for a FSA. For more information, including what over-the-counter medications can be reimbursed and dependent care expenses, please visit the Web site of Custom Benefit Services, our third-party administrator who processes the refunds, at <http://www.ezflexplan.com/cbs/home.asp>. (This Web site is located within HR's site.)

By choosing to redirect a portion of your salary to your FSA, you essentially "bank" your money in a tax-free account from which you can get reimbursed throughout the year. The reimbursement form can be found on the Human Resources Web site, at [http://www.spcollege.edu/central/hr/Open\\_Enrollment/Forms.htm](http://www.spcollege.edu/central/hr/Open_Enrollment/Forms.htm). Click on "Flexible Spending Account Reimbursement Form." Refunds are typically received in about two weeks.

For those currently enrolled in an FSA, you have until March 15 to use your 2007 funds. All reimbursement requests for the 2007 FSA must be postmarked by April 30, 2008.

## Marketers *continued from Page 1*

adversity.

"Some people have to overcome hardships and make sacrifices to come here and further their education," Hearn said. "But just about everyone talks very positively of the experience and of the opportunities that await them, thanks to their time at SPC."

Besides simply chatting, the students sat for impromptu pictures. Some may be used in upcoming ads or marketing campaigns.

## Onward & Upward

**Marse Walsh**, curriculum coordinator/Title III program and **Susan Burnett**, Tech Prep coordinator, presented "Engaging the Millennials" at the National Career Pathways Network Conference in Louisville, Ky., and at the Florida Career Pathways Symposium in Jupiter Beach.

**Betty Jo Gaston**, Baccalaureate program librarian, presented in the poster session at the EDUCAUSE Conference in Seattle. EDUCAUSE is a nonprofit association whose mission is to advance higher education by promoting the intelligent use of Information Technology. The conference hosted close to 7,000 educators from more than 57 countries.

Gaston's session, "Kicking it up a Notch: Adding Scholarly Resources to Digital Environments," explored how faculty can add quality content to online courses for student discussions and group projects.

If you would like to know more about the conference and EDUCAUSE, call Gaston at Ext. 7179 or visit the library's blog.

**Beth Carlson, CL**, Communications instructor, presented "Teaching Linguistics of American Sign Language in a Blended Environment: From Theory to Practice" at the National American Sign Language Teachers' Association conference.

**Frona Elkes, CL**, Communications instructor, presented "Cross Cultural Interpreting of Idiomatic Language" at the Florida Registry of Interpreters, in Tampa.

**Nan Morelli-White** and **Greg Byrd, CL** Communications instructors, co-authored a recent publication: "Teaching Nineteenth Century American Poetry in the Community College." The essay appeared in a collection of essays titled, *Teaching Nineteenth Century American Poetry*.

## Chorus will present Veterans Day program Nov. 11

The 140-voice College Chorus will present a program of patriotic music Nov. 11 at 3 p.m. at the Palladium Theater, 253 Fifth Ave. N, St. Petersburg.

The Chorus will be joined by the SPC Madrigalians in presenting "American Remembers: A Veterans Day Salute." Vernon Taranto Jr., director of choral activities, will conduct.

The program will include *God Bless America*, *Battle Hymn of the Republic*, *This is My Country*; Songs of George M. Cohan, *America the Beautiful*, *Strike Up the Band*, and more.

Faculty soprano soloist Linda Switzer will be featured.

Admission is free, although a \$4 donation is suggested. For more information, contact Taranto at Ext. 4678 or [tarantov@spcollege.edu](mailto:tarantov@spcollege.edu).

## Car show planned for Caruth Center parking lot

The St. Petersburg College chapter of the Florida Association of Community Colleges (FACC) will sponsor a car show in the Caruth Health Education Center parking lot Nov. 10 from 10 a.m. to 3 p.m.

Trophies will be awarded.

The entry fee is \$10, or \$12 on the day of the event. Spectator

admission is free. The program includes food, music, and health and safety events.

Proceeds will benefit the American Diabetes Association. For more information, call Phil Scala or Rob Samay at Ext. 3621, or Ginny White at Ext. 3789.

## 'Experience SPC' to help high school students, parents get answers

Have questions about college? St. Petersburg College wants to help answer your questions.

Four 'Experience SPC' sessions are scheduled next month.

Sessions will be Nov. 12 at Seminole, Nov. 13 at St. Petersburg/Gibbs, Nov. 14 at Tarpon Springs and Nov. 15 at Clearwater.

All sessions run from 5 to 7 p.m.

Guests will learn about associate's and bachelor's degrees, financial assistance, college costs, application and registration and much more from education professionals.

At 6:30 each night, a "Movie on the Lawn" will be shown.

## Baccalaureate Expo Thursday at EpiCenter

The college will sponsor a Baccalaureate Expo Thursday from 10 a.m. to 7 p.m. at the EpiCenter. The Expo will feature the college's four-year degree programs.

Four-year degrees are offered in Education, Health and Human Studies, Management and Leadership, Banking, Dental Hygiene, International Business, Nursing, Orthotics and Prosthetics, Paralegal Studies, Technology Management, and Veterinary Technology.

For more information, call Ext. 4772, or visit [www.spcollege.edu](http://www.spcollege.edu).

## Free pet rescue class Nov. 15 at Allstate Center

St. Petersburg College will sponsor a free, day-long class on rescuing and recovering animals during hurricanes and other crises. The class, *Project Animal Rescue and Restore: All Animals - All Disasters*, is from 8 a.m. to 5 p.m. Nov. 15 at the Allstate Center. Lunch will be provided. For more information, call Barbara Kieta at Ext. 4432.

# Cafeteria Plan

## Election Form for St. Petersburg College Employees

St. Petersburg College

1-1-2008

through 12-31-2008

Employer Name \_\_\_\_\_

Plan Year \_\_\_\_\_

through

Employee Name \_\_\_\_\_

Social Security Number \_\_\_\_\_

Employee Street Address \_\_\_\_\_

City \_\_\_\_\_

State \_\_\_\_\_

Zip Code \_\_\_\_\_

No. of Pay Periods

Per Year 24

Hours regularly worked each week  
for this employer \_\_\_\_\_

I understand that I have an amount of flexible pay equal to \$ \_\_\_\_\_ per pay period for the purchase of qualified benefits. I hereby authorize and direct my employer to reduce my salary in the amount necessary to pay for the coverages shown below. Such reductions, considered as elective contributions under the plan, shall commence with my paycheck dated January 4, 2008. I further authorize future adjustment in the amount of the salary reduction in the event that the cost of coverage in any program selected below under the heading "Premium Only Plan" is changed during the plan year.

I also understand that the purpose of this program is to allow employees to select their qualified benefits within the guidelines of the Internal Revenue Code.

Listed below are the benefits that may be available under the plan. Please indicate which benefits you wish to select by completing the total per-deduction-period cost and the amount to be paid by salary reduction. The selections will remain in effect until a subsequent election form is filed, in accordance with the plan.

| Benefit* (All amounts should be per deduction period.)                    | Salary Reduction Amount Per Pay Period | No. of Reductions Per Year | Annual Election Amount |
|---|--|----------------------------|------------------------|
| <b>Dependent Care Reimbursement Plan</b><br>Coverage Effective Date _____ | _____                                  | _____                      | _____                  |
| <b>Health Care Reimbursement Plan</b><br>Coverage Effective Date _____    | _____                                  | _____                      | _____                  |
| <b>Totals</b>   | _____                                  | _____                      | _____                  |

\*I understand that only benefits listed in my employer's Flexible Benefits Plan document are available. I understand that the selection of a benefit and the indication that a premium is to be paid does not necessarily include me in the insurance portions of this plan. In most instances an application for insurance must also be completed.

**This election form will remain in effect and cannot be revoked or changed during the plan year, unless the revocation and new election are on account of and consistent with a change in family status (e.g., marriage, divorce, death of spouse or child, birth or adoption of a child, and termination of employment of spouse).**

**I understand that the insurance claim payments under certain coverages may be subject to federal and state taxes when the premium is paid by salary reductions or employer contributions.**

**AUTHORIZATION:** I certify the above information to be correct and true and any dependents for which I have selected the dependent care benefit reside with me in a parent-child relationship and/or are legally dependent on me for their support. I understand that any amounts remaining in my account(s) not used for eligible expenses incurred during the plan year will be forfeited in accordance with current plan provisions and tax laws. I hereby authorize the deduction of the administrative fee, if applicable.

\*Reminder: Cosmetic and elective procedures are not eligible for reimbursement. For questions regarding specific items or procedures, please call your benefits office or Custom Benefit Services. Please note, vitamins and supplements require a letter of medical necessity from your doctor.

If you have questions or need additional information, please contact us at 1-800-809-8161 or visit our Website at [www.ezflexplan.com/cbs](http://www.ezflexplan.com/cbs).

Signature \_\_\_\_\_ Date \_\_\_\_\_

**IF YOU DECLINE PARTICIPATION:** The benefits of the plan have been thoroughly explained to me and I decline to participate.

Signature \_\_\_\_\_ Date \_\_\_\_\_

# BOT *Highlights*

---

OCTOBER 16, 2007

## PRESENTATIONS

Peter Brown Construction, who has supported the College annually with \$10,000 in scholarship donations to assist and encourage students in preparing for their professional opportunities, was represented in attendance by Mr. Tito Vargas and Ms. Jenny Sanchez as they announced this year's second \$5,000 donation. Mr. Vargas stated that Peter Brown Construction is proud to be associated with SPC.

Two students from the St. Petersburg Collegiate High School were in attendance to receive recognition for achieving academic milestones – Ms. Marissa Miranda, semifinalist for the National Merit Scholarship, and Ms. Kelsey Smith, semifinalist for the National Achievement Scholarship – both firsts for the high school. Principal Linda Benware credited the students' hard work, support of their families and support of the school for their success.

## BIDS, EXPENDITURES AND CONTRACTS (through Purchasing)

The Board accepted the Quarterly Report of Exempt and Other Purchases Not Exceeding \$250,000 each as information only. The Board confirmed its Sept. 18, 2007 approval of additional insurance policy payments not included in the previously-approved membership assessment in the Florida Community Colleges Risk Management Consortium.

## OTHER EXPENDITURES AND CONTRACTS (exceeding \$250,000)

The Board accepted the Quarterly Report on Contract Items as information only. The Board approved entering into agreements with Time Warner Telecom Holdings, Inc. for (1) Wide Area Networking & Internet Services, and (2) Long Distance and Other Outbound Telephone Services.

## CAPITAL OUTLAY (Money that can be spent only on construction projects)

The Board accepted the Quarterly Informational Report of Construction Contract Approvals Not Exceeding \$250,000 as information only. The Board approved the following: (1) Disposition of Surplus or Obsolete Property; (2) Certificate of Final Inspection and Release of Final Payment, Entrance Redesign/Belcher Extension, Tarpon Springs Campus; and (3) Phase I Preliminary Schematic Design Plans and Preliminary Guaranteed Maximum Price for Renovation of 1st Floor Classrooms (Business and Banking), EpiCenter District Office.

## CHANGES TO THE BOARD OF TRUSTEES' RULES

The Board approved the following changes to the Rules and Procedures Manual: (1) Rule 6Hx23-2.31 Sick Leave and Leave for Illness in Line of Duty. This increases the sick leave pool contribution rate from four to five days and expands the number of days for sick leave pool use from 40 to 45 with a maximum use of not more than 55 days within a fiscal year; (2) Rule 6Hx23-4.53

Health Related Programs – Special Rules. This clarifies that students must be admitted to SPC, be in good academic standing, and have at least a 2.0 GPA prior to enrolling in the first specialty course in health-related programs; (3) Rule 6Hx23-4.702 Requirements of the Healthcare Informatics Program. This establishes progression, special progress and graduation requirements for the Healthcare Informatics Associate in Science degree and the Healthcare Informatics certificate; and (4) Rule 6Hx23-5.17 Student Fees. This adds a lab fee for Fire Science course FFP 1832 Emergency Response to Terrorism: Basic Concepts, and increases the tuition cost per contact hour for PSAV courses by 5%, which is in compliance with state law.

## CREDIT CURRICULUM CHANGES

### EFFECTIVE TERM I, 2007-2008:

The Board approved **addition** of the following courses: CIS 2352 Ethical Hacking; CIS 2357 Database Security; CIS 23XX Incident Response and Disaster Recovery; PGY Large Format Photography; PGY 2447C Alternative Processes/Photography; PGY 2473C Portfolio Development; PGY 2940C Professional Practices/Internship; RED 4324 Reading in the Middle School.

The Board approved **changes** in the following courses: AMH 2010 History of the United States I; AMH 2020 History of the United States II; ART 1203C Design II; CET 1600 Network Fundamentals (Cisco); CGS 1937 CGI Scripts Using Perl II; MUC 1101 Applied Music Composition; MUN 1210 College Orchestra; MUN 1310 College Chorus; MUN 1340 Madrigalians; MUS 1360 Music and Computers; MVK 1111 Class Piano I; MVK 1411 Applied Performance Piano; MVK 2421 Applied Performance Piano; MVV 1411 Applied Performance Voice; MVV 2421 Applied Performance Voice; PGY 2201C Photography Studio Lighting; PGY 2470C Themes for Photographers.

The Board approved **deletion** of the following course: CGS 2871 Desktop Audio Visual Design. The Board approved changes in the following programs: BS Degree: Science Education-Biology Emphasis (BSCED); AS Degree: Information Technology (IT) Security (ITSEC).

### EFFECTIVE TERM II, 2007-2008:

The Board approved **changes** in the following courses: DEH 3814 Introduction to Dental Hygiene Research; DEH 4607 Advanced Periodontics; DEH 4947 Dental Hygiene Capstone; HIM 1000 Introduction to Health Information Management; HIM 1211 Health Information Technologies; HIM 1430 Principles of Disease; HIM 2012 Health Law Concepts and Practices; HIM 2214C Healthcare Statistics; HIM 2222 Basic ICD Coding; HIM 2253 Basic CPT Coding; HIM 1XXX Introduction to Healthcare Informatics; HIM 2XX1 Introduction to Coding and Reimbursement Systems.

See *NOTICE* Page 7

The Board approved **addition** of the following AS Degree: Healthcare Informatics Transitional Program (HCINF).

The Board approved **changes** in the following programs: BAS Degree: Dental Hygiene (DENH); AS Degrees: Health Information Management (HIM); Healthcare Informatics (HCINF); CT Programs: Healthcare Informatics (HCINF); Medical Coder (MEDCD).

**GRANTS/RESTRICTED FUNDS CONTRACTS**

The Board authorized applications for and acceptance of grant funding (if awarded) from: (1) Workforce Florida, Inc./Florida Department of Commerce for Quick Response training for MarineMax; and (2) U.S. Department of Defense, National Guard Bureau, Department of Military Affairs, for the Florida National Guard's Counterdrug Program.

**2008 STUDY ABROAD PROGRAMS**

The Board approved development and offering of the following 2008 Study Abroad opportunities for students: (1) The Cambridge University Summer Program; (2) Spanish Language Immersion in Cuenca, Ecuador; (3) Tropical Ecology/Earth Science in Belize; (4) Japanese Pottery and Education for Persons with Developmental Disabilities; and (5) Musical Ambassador Tour/Russia.

**SACS UPDATE**

The Board was provided with an update on the recent SACS visit. All staff involved in the process were commended for their diligent efforts on behalf of the College. The College anticipates a report in the near future from SACS on any QEP issues, with a final vote by SACS scheduled to take place in June. No further comments

on the Compliance side are anticipated, and only a few comments are expected on the QEP side. Overall, the visit by the SACS team was deemed a great success.

**LEGISLATIVE UPDATE**

The Board was presented with a picture frame of the College budget, pending changes coming down from the state level, and addressed the proposed student fee increase, which would be effective Jan. 2008. The Board gave its understanding that once approved by the Governor, the increase could be advertised and charged for Session II registration. Recommendations regarding the pending up-to-3% salary increase (preserved by the Board last June) will be further studied under the new revenue stream and brought back for the Board's consideration at its November meeting.

**FUTURE BOT SCHEDULE**

The Board's November meeting will be held on Tuesday, Nov. 20, at the Tarpon Springs Campus, beginning at 8 a.m. with a tour of the new food service facility and bookstore in the Olympia building, followed by a workshop on Campus Security at 8:30 a.m. and meeting at approximately 9 a.m. in FA 132.

The Board's December meeting will be held on Monday, Dec. 17, at the St. Petersburg/Gibbs Campus, beginning at 8:30 a.m. and will include a workshop on Corporate Training Reorganization.

The Board's February meeting will be held on Tuesday, Feb. 19, at the Allstate Center, beginning at approximately 8 a.m. with a Virtual Studio Tour.

american  
stage

# AMERICAN STAGE

theatre company  
"Tampa Bay's Best Professional Theatre"



# JOIN THE FAMILY!

(and save up to \$100)

To celebrate our new partnership with St. Petersburg College, American Stage Theatre Company is offering a special season subscription discount to SPC employees.

2007-08 season:

SLEUTH - Oct. 31 - Dec. 2, THE BIG BANG! - Dec. 6-23, MOONLIGHT AND MAGNOLIAS - Jan. 16 - Feb. 10, HAMLET - March 5-30, THE PIRATES OF PENZANCE - April 9 - May 4, BETRAYAL - June 4 - 29, SOUVENIR - July 16 - Aug. 10

for info:

**(727) 823-PLAY (7529)**  
**americanstage.org**  
211 3rd St. South, St. Petersburg

Return the form below  
or mention this flyer to  
our box office!

## 2007-08 Season Subscription Special

|  |  |
|--|--|
| <b>7</b><br>play<br>package                              | <input type="radio"/> previews (wed/thu) \$119 each = \$ _____   |
|  | <input type="radio"/> matinee (sat/sun) \$137 each = \$ _____    |
|  | <input type="radio"/> wed/thu (circle one) \$150 each = \$ _____ |
|  | <input type="radio"/> fri/sat (circle one) \$164 each = \$ _____ |
|  | <input type="radio"/> opening night \$204 each = \$ _____        |
| choose your park performance April 9 - May 4, 2008 _____ |  |

|                             |  |
|-----------------------------|--|
| <b>6</b><br>play<br>package | <input type="radio"/> previews (wed/thu) \$ 99 each = \$ _____   |
|                             | <input type="radio"/> matinee (sat/sun) \$117 each = \$ _____    |
|                             | <input type="radio"/> wed/thu (circle one) \$131 each = \$ _____ |
|                             | <input type="radio"/> fri/sat (circle one) \$144 each = \$ _____ |
|                             | <input type="radio"/> opening night \$185 each = \$ _____        |

|                             |  |
|-----------------------------|--|
| <b>5</b><br>play<br>package | <input type="radio"/> previews (wed/thu) \$ 83 each = \$ _____   |
|                             | <input type="radio"/> matinee (sat/sun) \$ 98 each = \$ _____    |
|                             | <input type="radio"/> wed/thu (circle one) \$109 each = \$ _____ |
|                             | <input type="radio"/> fri/sat (circle one) \$120 each = \$ _____ |
|                             | <input type="radio"/> opening night \$154 each = \$ _____        |

- FLEX PASS - \$116 each = \$ \_\_\_\_\_  
6 tickets whenever you want, however you want!
- NEXT WAVE - \$ 89 each = \$ \_\_\_\_\_  
For audiences 30 and younger, 6 tickets to anything!

### TOTAL IT UP!

\$3 handling fee per subscription = \$ \_\_\_\_\_  
**TOTAL = \$ \_\_\_\_\_**

name: \_\_\_\_\_  
address: \_\_\_\_\_  
city: \_\_\_\_\_  
state/zip: \_\_\_\_\_  
ph#: \_\_\_\_\_  
e-mail: \_\_\_\_\_

make checks to: **American Stage**  
 check  visa  mc  amex  discover  
account #: \_\_\_\_\_

RETURN YOUR FORM TO:  
**AMERICAN STAGE THEATRE COMPANY**  
P.O. Box 1560  
St. Petersburg, FL 33731  
for more information:  
**727.823.PLAY (7529)** or [americanstage.org](http://americanstage.org)