



## New Flex Team can handle all sorts of assignments

As enrollment rises, the college has a new strategy to help handle the corresponding increase in workload: The Flex Team.

A five-member group based in Human Resources, the Flex Team is the brainchild of SPC President Carl M. Kuttler, Jr. The president asked HR to create what amounts to an internal “temp” agency. Only the employees are not temporary — they are in full-time, budgeted positions.

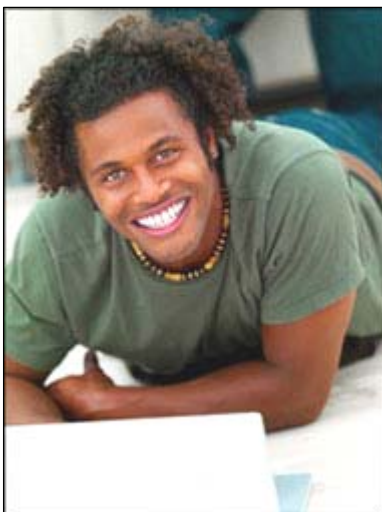
Having these as regularly established positions means those in them should be better equipped to fill in than an OPS person who is new to the college. It’s also hoped this will save OPS and overtime costs.

Instead, the Flex Team is there. Even better, one of the Flex Team members (Vivian Winters) has helped in Central Records before.

Susan Fell, Director of Admissions and Records, said she has been delighted with the work produced by the Flex Team on its first assignment, which is expected to last about two weeks. [See FLEX page 3](#)

## Open Enrollment continues

The new online Open Enrollment process is a big hit! Be sure to read the following updates:



Signing up for your benefits is easier this year. It’s all online. Visit [Open Enrollment News](#) for details on:

- » Benefits
- » How to enroll online (June 8-19)
- » How to sign up for non-smoker screening (required for discounted rate)
- » On-campus info sessions (not for turning in paperwork)
- » Dependent verification (required)

In an effort to save money and trees, a postcard notice was mailed to employees this year instead of the large printed enrollment packet. While the new, more efficient process is online, HR representatives are available to personally answer any questions you may have. [On-campus info sessions](#) continue or you can call the Benefits Open Enrollment Hotline, Monday - Friday, 8:30 a.m. to 4:30 p.m.

 **BENEFITS OPEN ENROLLMENT HOTLINE - 727-302-6889**

## Update on qualifying for discounted insurance rates

As most employees may know by now, there are some changes in the way you qualify for the discounted insurance rates beginning July 1. Employees who want the discounted rates now must prove they are non-smokers and must participate in some wellness activities.

To qualify, you must take Aetna's online Health Risk Assessment and complete at least one online Healthy Living program recommended by the assessment.

Please note that Aetna announced some changes to the Healthy Living programs this week. The changes begin in mid-August, so you may want to wait until then to start your online Healthy Living program.

However, do **NOT** wait to take your confidential [Health Risk Assessment](#). It **MUST BE COMPLETED** by June 30 if you already are enrolled in Aetna and by July 31 if you are joining as of July 1.

Changes to the Healthy Living programs since last week

Aetna will update the program on Aug. 15. You may do one of the programs now, but it must be completed before Aug. 15. If it isn't, it will be lost when the new system comes online and you won't be given credit for it. That means you must start your Healthy Living program no later than July 6 or you must wait until after Aug. 15 to begin. Either way, the program will rely on answers given via the confidential Health Risk Assessment completed by the June 30 deadline.

Recap of what you need to do to qualify for the discounted rate for 2009-10

- Verify that you are a non-smoker by taking a quick, medically sound screening to document you are free of carbon monoxide. The brief (it takes less than one minute) test in which the employee blows into an instrument is being offered on each campus this month during the Open Enrollment sessions. It must be completed by June 30.
- Complete the confidential online Health Risk Assessment by June 30 if you already have Aetna, by July 31 if you're joining Aetna as of July 1. It only has to be done once.
- During the first six months of the plan year (July 1-Dec. 31, 2009), complete one online Healthy Living program recommended as a result of the confidential Health Risk Assessment and either complete a second online Healthy Living program or earn a minimum number of individual points (450) in the fall Wellness Challenge.

Healthy Living programs are tailored for every employee, according to that employee's needs and physical abilities. They cover a variety of subjects, ranging from Alcohol Awareness to Stress-Relief to Healthy Heart. Just that scenario is playing out in Central Records, where the backlog is so desperate that OPS help was about to be called in.

---

## The Blue & White

Editor: Wilma Norton, Web Designer: Barbara Wolter, Writers: Bill Frederick, Wilma Norton

*Blue & White* is produced weekly by SPC's Office of Institutional Advancement, to communicate administrative and staff information to college employees. Submissions should be received no later than Friday noon for publication the following Friday. Send them by e-mail to [norton.wilma@spcollege.edu](mailto:norton.wilma@spcollege.edu) or send by campus mail to Institutional Advancement, EpiCenter Services.

## ***FLEX Continued from page 1***

Fell said her own employees can evaluate such documents as transfer credits, while the Flex Team members (called Administrative Generalists) can handle the information entry into PeopleSoft.

“Without the Flex Team’s help, our evaluators would be doing both tasks,” she said.

The Flex Team can be deployed as a five-member team, or individual team members can be sent out on assignments, said HR’s Lisa Charest, who manages the Flex Team and its assignments.

It’s anticipated that Flex Team members will be flexible enough to handle front-line customer-service interaction, PeopleSoft-related work, and general administrative support.

Charest said the Flex Team could be dispatched quickly to any SPC department that needs short-term assistance – for no less than two weeks and no more than four months.

“The idea behind the Flex Team,” she said, “was to develop a small but effective team of generalists who could deploy quickly, work hard for a short period of time, then move on to the next assignment.”

The MySPC Answer Place (MAP) Centers are a target for the Flex Team during peak student registration periods. At other times during the year, members could be assigned on special projects or, Charest said, to fill voids created by extended leave.

Departments wishing to use the services of the Flex Team must complete an electronic needs-assessment form. HR will do its best to match the right Flex Team member to the need.

By design the Flex Team members come from a variety of backgrounds.

Interested in learning more about the Flex Team or requesting team members for your area? Please contact Lisa Charest at [charest.lisa@spcollege.edu](mailto:charest.lisa@spcollege.edu) or 727-341-3046. The members are:



### **Paty DeMilo**

Previously employed by Essilor of America, Paty (with one “T”) is a native of Quito, Ecuador. Her bilingual background already is coming in handy. She is helping during Benefits Open Enrollment with employees whose native tongue is Spanish. With a bachelor’s degree in Business Administration, Paty is a former accountant for the United Nations in Ecuador. In her job at Essilor Latin America, her assignments included resolving escalated customer service issues and training new employees.



### **Reuben Mekonnen**

A former employee of Aloha Utilities (where he was an Administrative Assistant in Billing and Records) Reuben is a proud graduate of St. Petersburg College (Tarpon Springs Campus). He holds a bachelor’s degree in Economics from the University of Florida, with a specialization in Business Management/Marketing. While at Aloha Utilities, his duties ranged from internal office assignments to working directly with customers. Earlier, he worked at Ace Hardware, where he maintained the store’s inventory.



### **Eunice Vazquez**

A 10-year SPC employee, Eunice moved from the Criminal Justice Institute's In-Service Training section. Among her duties at the Allstate Center were helping to enroll non-credit students and maintaining productivity reports. She earned an Associate in Arts degree from SPJC and a Bachelor of Arts degree from the University of South Florida, where she majored in Interdisciplinary Social Science with a concentration in economics. She is an eight-year U.S. Army veteran.



### **Brian Werner**

A Miami native, Brian attended Clemson University and the University of South Florida, where he earned a bachelor's degree in Communications. He worked for the New York Yankees in the Player Development and Scouting offices, where duties spanned statistical analysis, arranging player travel, and maintaining team rosters for six levels of baseball. More recently, he was property manager for a Clearwater Beach developer. He also is a pitching coach at Seminole High School.



### **Vivian Winters**

Vivian has worked at SPC since 2006, most recently in the Accounts Payable section of Business Services. Journal entries, purchase order requisitions, check requests, and basic bookkeeping all are second-nature to her. Hailing from Massachusetts, Vivian has an associate degree in Accounting from Greenfield Community College. Her pre-SPC employers include Hydro Spa Parts & Accessories, Inc., where maintaining inventory was a key duty, and Labelclick, Inc. where assignments also included human resources work.

---

## **On SPC-TV**

Here is the broadcast schedule for the original cultural programs recorded by SPC for broadcast on the college station. SPC-TV can be seen on Bright House 620, Knology 19 and Verizon 47 in Pinellas County.

- » **Stories from the Campfire: Living Life Without Limits** - Saturday at noon and 9 p.m.; Wednesday at 9 p.m.
- » **SPC Madrigalians: Oh, Eternal Spring** - Monday at 9 p.m.; Friday at 9 p.m. and Saturday at 8 p.m.
- » **CoMotion Dance Theatre - Spring 2009 Dance Concert** - Sunday at 11 a.m. and 8 p.m.; Thursday at 8 p.m.
- » **Frontline: Behind the Lines** - Tuesday at 9 p.m.
- » **The Music Center Presents: Percussion Ensemble** - Sunday at 11:30 a.m. and 8 p.m.; Thursday at 8:30 p.m.; Saturday at 8:30 p.m.
- » **A Night at the Palladium: Divertissement Ensemble** - Saturday at 11 a.m. and 9 p.m.

---

## **Equal Opportunity**

St. Petersburg College is dedicated to the concept of equal opportunity. The college will not discriminate on the basis of race, color, religion, sex, age, national origin, or marital status, or against any qualified individual with disabilities, in its employment practices or in the admission and treatment of students. Recognizing that sexual harassment constitutes discrimination on the basis of sex and violates this rule, the college will not tolerate such conduct. Should you experience such behavior, please contact the director of EA/EO at 727-341-3261; by mail at P.O. Box 13489, St. Petersburg, FL 33733-3489; or by e-mail at [eaio\\_director@spcollege](mailto:eaio_director@spcollege).

## Collegiate High students No. 1 in county on FCAT

St. Petersburg Collegiate High School (SPCHS) students have once again placed among Florida's best high schools on Florida's Comprehensive Assessment Test (FCAT).

SPCHS students recorded the highest test results of any school in Pinellas County, and also placed among the best in Florida on the recently released 2009 FCAT results.



*Starla Metz, SPCHS Principal*

"I think this demonstrates how the SPC and the Collegiate High School faculties work seamlessly to ensure that SPCHS students achieve at very high levels," said Starla Metz, SPCHS Principal (pictured left). "It's a partnership, and the support we get from SPC is greatly appreciated – it truly makes a difference for our students."

SPCHS FCAT results (Sunshine State Standards) included:

- » In mathematics, the students scored a 100 percent passing rate at levels 3-5; ranked first in Pinellas County; and ranked first in the state, along with four other schools.
- » In reading, 100 percent of students passed; 91 percent scored at levels 3-5; ranked second in the state; and ranked first in Pinellas County. While reading scores dropped statewide, SPCHS' scores went up seven points.

- » In writing, 95 percent of students passed; ranked fifth in the state, first in Pinellas County.
- » In science, 87 percent passed scoring at levels 3-5; ranked sixth in the state; ranked first in Pinellas County.

Metz said SPCHS students have performed at or near the top of the range since the FCAT was first introduced. She said the school's performance is in the same league as those schools that have stringent entrance criteria; SPCHS has an open enrollment policy.

One thing that helped this year, she said, is the addition of a certified math teacher who served as a tutor to students who needed a bit of extra help.

"She offered support in math for our students who were having some difficulty, as well as support for study skills and coaching," Metz said. "I think that made a big difference."

---

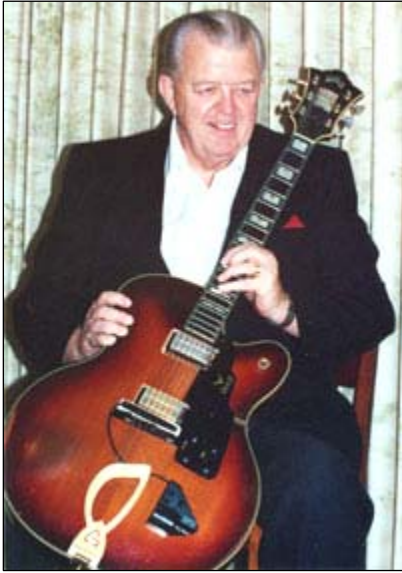
## Baccalaureate Expo 2009 is June 25

[Baccalaureate Expo 2009](#), which showcases SPC's four-year degree programs, will be June 25 from 11 a.m. to 7 p.m. at the EpiCenter.

Visitors can talk with advisors, four-year degree specialists, faculty and staff. They can learn how to transfer associate's degree credits, learn about upper division certificates, and get advice on admissions and financial assistance.

They also can submit applications, turn in official transcripts, and get help registering for classes. In addition, information is available on degree programs offered through the University Partnership Center. For more information, call 727-341-4772 or e-mail to [4yeardegrees@spcollege.edu](mailto:4yeardegrees@spcollege.edu)

## Frank Mullen, jazz guitarist and retired SPC teacher, dies



Frank Mullen, a well-known and well-respected jazz guitarist who set up SPC's guitar program in the early 1970s and then taught the instrument for 32 years at the school as an adjunct instructor, died June 5. He was 78.

Mr. Mullen was born in Washington, D.C. and became interested in the guitar at age 10. Three years later, he formed a big band that played in the Washington area for six years. Along with Charlie Byrd and Bill Harris, he became part of a select group of jazz guitarists who pioneered the classical guitar as a jazz instrument.

He went on to become a fixture on the national jazz scene. In a career that began in the 1940s and lasted well over 60 years, he played with such jazz icons as Wes Montgomery, Charlie Byrd, Larry Elgart, Herb Ellis and Les Elgart. He also performed with Sammy Davis, Jr., Eddie Fisher, Tennessee Ernie Ford, Sergio Franchi, Marvin Gaye, Bob Hope, Tom Jones, Horace Heidt, Carol Lawrence, Tony Martin, Julie Andrews, Steve Allen, Skitch Henderson and others.

In 1972, Mr. Mullen moved his family to St. Petersburg. He began teaching at SPC the next year, beginning a relationship that lasted until his retirement in 2005. During his years at SPC, he continued to perform, teach and serve as a mentor to up-and-coming jazz guitarists.

Joe Braccio, who teaches guitar at SPC, was an early student of Mr. Mullen.

"I was a music major at SPJC, majoring in flute and minoring in piano. I once played classical guitar for a music theory class, and my teacher, Larry McCann, said we should have a program for guitar. He got Frank Mullen, who became our teacher."

Braccio said Mr. Mullen was able to attract nationally known jazz performers to come and do clinics for SPJC music students.

"We had Herb Ellis and Charlie Byrd come here and play with him and do clinics for us," he said.

Mr. Mullen had his own methods on the guitar, "and he wanted you to follow them," Braccio said. "It was almost like having a master sergeant. His emphasis was on students being able to read a variety of styles."

Mr. Mullen leaves a wife and daughter. Services will be Friday at E. Dale Gunter Funeral Home, 4100-16th St. N., St. Petersburg. Graveside services will be at 1 p.m. Saturday at Woodlawn Memory Gardens.

---

### Thank you

Dear friends,

Thank you for your kindness and support during Keith's sudden relapse. He is in the hospital now receiving treatments. His attitude is positive during this time of treatment, and we appreciate so much all of your offers of help and support during this very difficult time. Thank you again.

Warmly, Keith and Anna Goree

## Cultural Corner

This weekly column features some of the arts and entertainment events presented by St. Petersburg College and its partners. **NEW** items are noted for your convenience.

### Discounts

**Florida Orchestra:** Faculty and staff now can purchase tickets at the student rate of \$10. Call the Florida Orchestra Ticket Center at 727-892-3337 and identify yourself as faculty or staff to place your order. Students can purchase two \$10 advance tickets through the mail, in person or by phone at the Florida Orchestra ticket center. Students must present ID when collecting tickets at the Will Call window on the night of concert. Subject to availability. Some restrictions may apply.

**Palladium:** Faculty, staff and students receive a 10 percent discount to all shows produced by the Palladium or its partners at the Palladium.

**Florida International Museum:** Faculty and staff \$5.

### Continuing through July 17

[Pinellas County Schools Spring Show](#), Crossroads Art Gallery, Clearwater Campus, Reception – May 20, 6-8 p.m. Free.

### Continuing through July 19

[Florida Artist Group: 58th Annual Exhibition, Leepa-Rattner Museum of Art](#), Tarpon Springs. Also: Sam Gilliam: Works In The Permanent Collection, From the Dorothy Mitchell Collection, through June 28; Pava Members' Exhibition, through July 11; and Artists Of The Hamptons Selections from the Benjamin and Jean Gollay Collection, through Nov. 8. 10 a.m.-5 p.m. Tuesday-Saturday, 1-5 p.m. Sunday. \$5 adults, \$4 seniors, free for children, members and students. Sunday admission free for all.

### Continuing through Oct. 4

[In a New Light: Selections from the Gulf Coast Museum of Art Collection, Florida International Museum at St. Petersburg College](#), St. Petersburg. Hours: 10 a.m.-5 p.m. Tuesday-Saturday; noon-5 p.m. Sunday. Last entry 4 p.m. daily. \$8 adults, \$6 seniors and military, \$5 groups, SPC staff and students, age 6 and younger free.

### Continuing through 28

[Tuesdays With Morrie](#), by Jeffrey Hatcher after Mitch Albom, 7:30 p.m. Wednesdays-Thursdays; 8 p.m. Fridays-Saturdays; 3 p.m. Saturdays-Sundays. First show in the new American Stage Theatre at St. Petersburg College, St. Petersburg. \$31-\$39.

### Friday, June 12

[St. Petersburg College Piano Concert Series: Rebecca Penneys, solo recital](#), 7:30 p.m. St. Petersburg College Music Center. Free.

### Saturday, June 13

[Piano Master Class: Rebecca Penneys](#), 10 a.m. St. Petersburg College Music Center. Free.

### NEW - Sunday, June 14

[Opera Video: La Cenerentola, Gioachino Rossini](#), 1:30 p.m., Leepa-Rattner Museum of Art, Auditorium. Free.

### Wednesday, June 17

[The Decade Series Program: Participatory Theater: At the Café Dôme](#), 4- 5:30 p.m. Leepa-Rattner Museum of Art Auditorium. \$3 members; \$5 non-members; students free.

### Saturday, June 20

[Summer Bash](#), social event celebrating the arts in the community with music, light appetizers, beer, wine and soft drinks. 8-10 p.m., Fine Arts Lobby, Leepa-Rattner Museum of Art. \$15; benefits museum educational programs.

### Thursday, June 25

[The Decade Series Lecture: Surrealism in the 1930s, Peter Tush](#), 7 p.m. Leepa-Rattner Museum of Art Auditorium. \$5 members; \$8 non-members.



## Wellness Challenge Fall Update

Slated to start in October, the SPC Wellness Challenge is a fun and flexible way to make healthy happen!

This voluntary team event not only gives you points for wellness basics such as exercising and eating healthier, but also for wearing a seat belt, eating plenty of fruits and even donating blood. From couch potatoes to triathletes, the SPC Wellness Challenge is designed to incorporate wellness into everyone's lifestyle.

And for budgeted employees who wish to continue to pay the discounted rate for medical coverage, participating in the fall wellness challenge and earning a minimum number of individual points (450) counts as a Wellness Activity.

Here is what's new:

- Points for volunteerism eliminated
- Points for being at a healthy body mass index added
- Points for donating blood increased from 2 to 10
- Points for fruit changed to per serving per day

Here is what's the same:

- It's site v. site. The site with the most cumulative points earns the distinction of Wellness Challenge Champion (note: Epi/DO count as one site). Individual teams also will be recognized.
- We encourage employees to form teams of 6 people creating camaraderie and accountability (you may form teams of less than 6 members, however, a team of less than 6 may be at a disadvantage for accruing points). All employees, budgeted as well as OPS and adjunct/percent-of-load, are welcome to participate.
- The team members must all be based at the same site; they do not have to be from the same department. There is no limit to the number of teams a site can have.
- The challenge will last six weeks – enough time for the new behavior to become a habit.
- Tracking of daily activity allows you to keep tabs on your progress.

---

## Meeting notices

The Development Committee for the [Leepa-Rattner Museum of Art](#) Board of Directors has rescheduled the June 10 meeting to Wednesday, June 24, at 3:30 p.m. in the Museum Archives to discuss general museum business.



## The Digital TV Transition begins! Are you ready?

### The issue

How do I get rid of my old television?

### The larger issue

- Electronic waste is growing three times as fast as other municipal waste. With the “digital TV transition” starting today, expect that number to skyrocket.
- In 2007, 30 million new televisions were purchased. Only 12% of those disposed of were recycled.
- About 40% of the lead, mercury and cadmium in landfills comes from discarded electronic equipment. It is well documented that over time, this toxic waste will leak back into the ground and the water.
- More than 1,000 materials, including between 4 to 8 pounds of lead, mercury, cadmium and toxic flame retardants can be found in every television. These heavy metals can cause brain and kidney damage and may affect hormonal functions.

### Be part of the solution

Remember the greenest TV's are the ones that already exist, so before you dump your old television or electronics, try giving it away! If that's not an option, try these eco-friendly alternatives instead:

- Give your old electronics to someone via Freecycle ([www.freecycle.org](http://www.freecycle.org)), a free Web site allowing people to recycle unwanted items.
- Donate your unwanted electronics to a thrift store, a church, synagogue or school.
- Recycle your old electronics equipment at any Office Depot or Staples.
- Contact Pinellas County Solid Waste at 727-464-7500 to find where you can drop off your old electronics.
- Again, the greenest televisions are the ones that already exist, so try to buy a used TV before buying new.
- When buying new electronics equipment, make sure to replace with Energy Star products ([www.energystar.gov](http://www.energystar.gov)).
- When the “digital TV transition” takes place, you will need a TV converter box if you own an analog TV without cable. Apply for a coupon at [www.dtv2009.gov/](http://www.dtv2009.gov/).
- Go to [takebackmytv.com](http://takebackmytv.com) and ask electronics manufacturers to take back their old televisions.

Want to become involved with SPC's exciting sustainability initiatives?

To participate in the sustainable | SPC initiative, visit [www.spcollege.edu/sustainability](http://www.spcollege.edu/sustainability) or call Jason Green at 341-3283.

# June 2009 Birthdays/Anniversaries

## Birthdays

06-01 Ernest Parsons  
 06-01 Brent Rudolph  
 06-02 Barbara Kieta  
 06-02 Sheryl Ogorek  
 06-03 Stephen Kohler  
 06-03 Joyce Collazo  
 06-04 Gary Brown  
 06-04 Jeffrey Donovick  
 06-04 Teresa Phoenix  
 06-05 Larry Webster  
 06-05 Barbara Rehkemper  
 06-05 Harold Best  
 06-05 Errol Dupoux  
 06-05 Paul Graham  
 06-05 Alexander Bawell  
 06-06 Virgilio Agbanlog  
 06-06 Mattie Perkins  
 06-07 Gail Burt  
 06-07 Vickie Hall  
 06-07 Anna Goree  
 06-07 Sonja Green  
 06-08 Ragan Brown  
 06-08 Vien Truong  
 06-08 Wendell Smith  
 06-09 Clifford Stodden  
 06-10 Lynne D'Leon  
 06-10 James Pedicone  
 06-10 Tim Price  
 06-10 Long Le  
 06-10 Mark Strickland  
 06-10 Anna Vok  
 06-12 Sharon Bobowski  
 06-12 Gary Robson  
 06-12 Nicholas Manias  
 06-12 Stephanie Wyatt  
 06-13 Susan Benson  
 06-14 William Thompson  
 06-14 Kenneth Chapman  
 06-14 Lee Miller  
 06-15 Donald Hendricks  
 06-15 Marika Robinson  
 06-15 Steven Hardt  
 06-15 Darlene Fuller  
 06-16 Anna Suess  
 06-16 Michael O'Neill  
 06-17 Ninh Nguyen  
 06-17 Michele Georgantis  
 06-17 Richard White  
 06-17 Ann Donald  
 06-17 Misty Berry

06-18 Teddi Voytas  
 06-18 Israel Nieves  
 06-18 Gary Radcliff  
 06-18 Jeanne Trimble  
 06-18 Norma Conner  
 06-18 Marisa Callahan  
 06-18 Lisa Borzewski  
 06-19 Michael Jefferis  
 06-19 Karen Miller  
 06-19 Jose Mercado  
 06-19 Josephine Villamarzo  
 06-20 Rosanne Miglino  
 06-21 Marsha Lange  
 06-21 James Olliver  
 06-21 Carolyn Kuhn  
 06-21 John Dillinger  
 06-21 Shirley Crumbley  
 06-22 Paul Angerosa  
 06-22 Lynda Womer  
 06-22 Christopher Patrick  
 06-22 Michael Repici  
 06-23 Gloria Otiniano  
 06-24 Richard Maison  
 06-24 Maria Hoyos  
 06-24 Laurel Miller  
 06-24 Linda Molinaro  
 06-24 Veronica Dann-Moore  
 06-24 Michael Marrillia  
 06-24 Pamala Dillon  
 06-25 Christine Pribyl  
 06-25 Carmen Torres  
 06-25 Linda Slawson  
 06-26 Eugene Oskamp  
 06-26 Virginia Price  
 06-27 Harry Berger  
 06-27 Paula Bagwell  
 06-28 Vernadean Dixon  
 06-28 Brenda Shears  
 06-28 Melissa Hudak  
 06-28 Thomas Van Nostrand  
 06-28 Jeffrey Schering  
 06-28 Jeffrey Fredriksen  
 06-29 Nina Winters  
 06-29 Sean Scott  
 06-30 Grace Lindsay  
 06-30 Dennis Mosser  
 06-30 Adeniji Odutola  
 06-30 Michael Kieta  
 06-30 David Anderson  
 06-30 Nicholas Sintes

## Anniversaries

35 David Tollon  
 33 Paula Aument  
 29 Linda Ruble  
 24 Dana Hamilton  
 23 Carol Barber  
 22 Lorayne Cragle  
 20 Deborah Proctor  
 19 Anthony Zurro  
 18 Marcia Johnson  
 17 Theresa Dimmer  
 17 Frederick Ragsdale  
 16 Stephen Leatham  
 15 Rosemary Van Riper  
 15 Phil Thomas  
 14 Patricia Jones  
 14 Carlene Peterson  
 13 Czeslawa Wisniewska  
 13 Ingrid Goodwin  
 13 Nerina Stepanovsky  
 11 Patricia Carothers  
 11 Jamie Ferrazano  
 11 Benjamin Hill  
 11 Israel Nieves  
 11 Gary Gray  
 10 Vonceil Smith  
 9 Kathi Brown  
 9 Donna Bush-Williams  
 9 Gregory Rabelo  
 9 Sheryl Mundorff  
 8 Todd Smith  
 8 Sally Naylor  
 8 John Grivizas  
 7 Susan Blanchard  
 7 Kay Burniston  
 7 Shri Goyal  
 7 Margaret Delgado  
 7 Ian Call  
 7 Mindy Conlin  
 7 Gina Proffitt  
 7 Stephen Ester  
 6 Crystal Blackburn  
 6 Crystal Hinnant  
 6 Todd Kirchgraber

6 Trenette Brown-Obeid  
 6 Steven Smith  
 6 James Waechter  
 5 Charles Crowther  
 5 Michelle Beck  
 5 Gregory McLeod  
 5 Frederick Pearce  
 5 Paul Angerosa  
 5 Maria Drew  
 5 Lori Stevens  
 5 Stefanie Silvers  
 5 Gloria Hobson  
 4 Richard Flora  
 4 Marilyn Cirri  
 4 Edel Quinn  
 4 James Panagiotacos  
 4 Hanh Pham  
 3 Jorge Perez  
 3 Gildred Reiter  
 3 Alexander Bawell  
 3 James Ralph  
 3 Dena Offutt  
 3 William Bliss  
 2 Nancy Jones  
 2 Candy Lazar  
 2 Maria Pemberton  
 2 Carol Rasor  
 2 Bonnie Taylor  
 2 Jacob Wortock  
 2 Barbara Wolter  
 2 Mark Alchier  
 2 Sharon Olsen  
 2 Micah Andrade  
 2 Tuan Nguyen  
 2 Kristin Pecchio  
 2 Michael Ewell  
 1 Joseph Algarin  
 1 Gary Clay  
 1 James Lumia  
 1 Rebecca Frank  
 1 Jennifer Gregor  
 1 Joseph Smith  
 1 Anna Vok