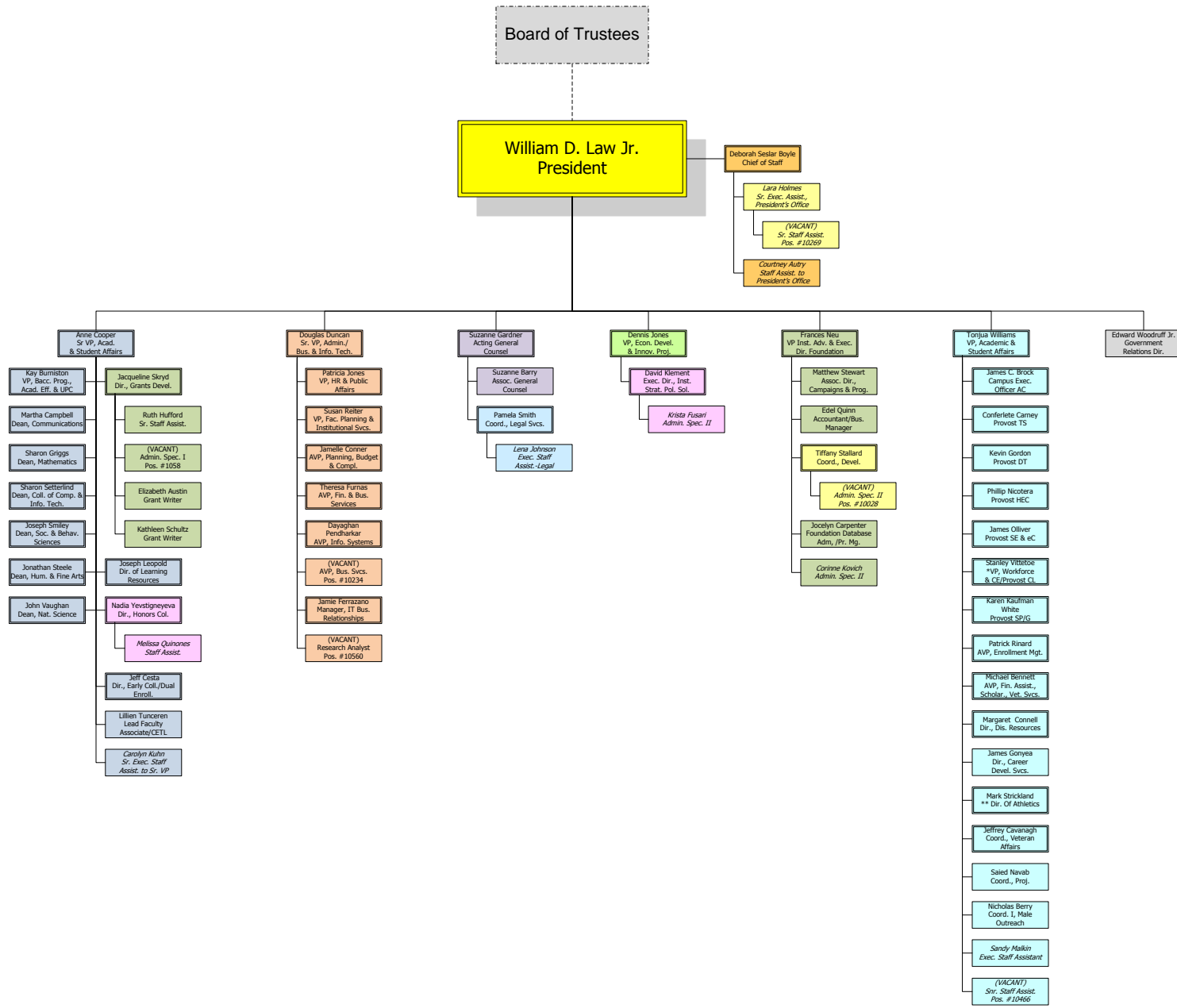


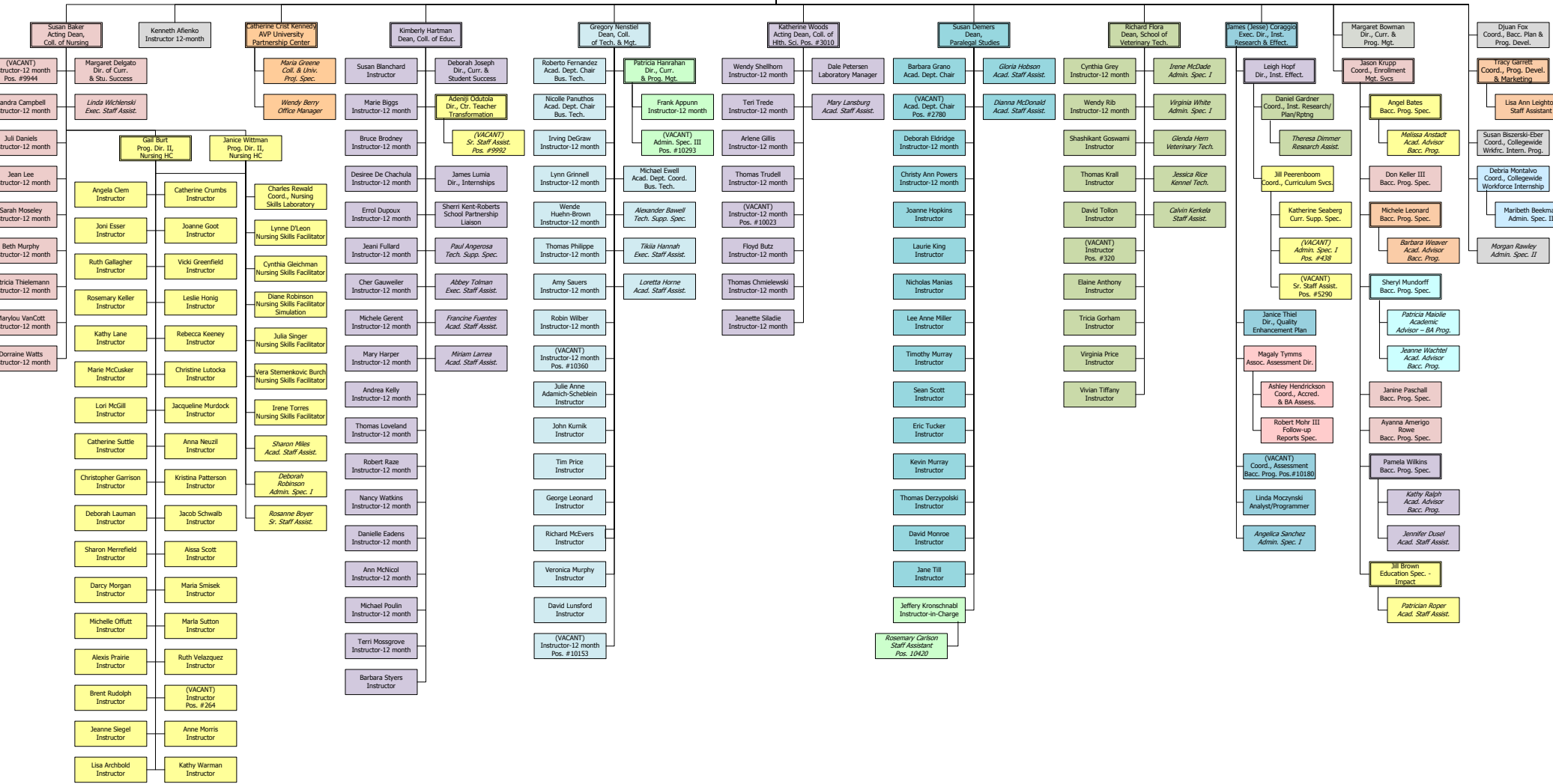
St. Petersburg College



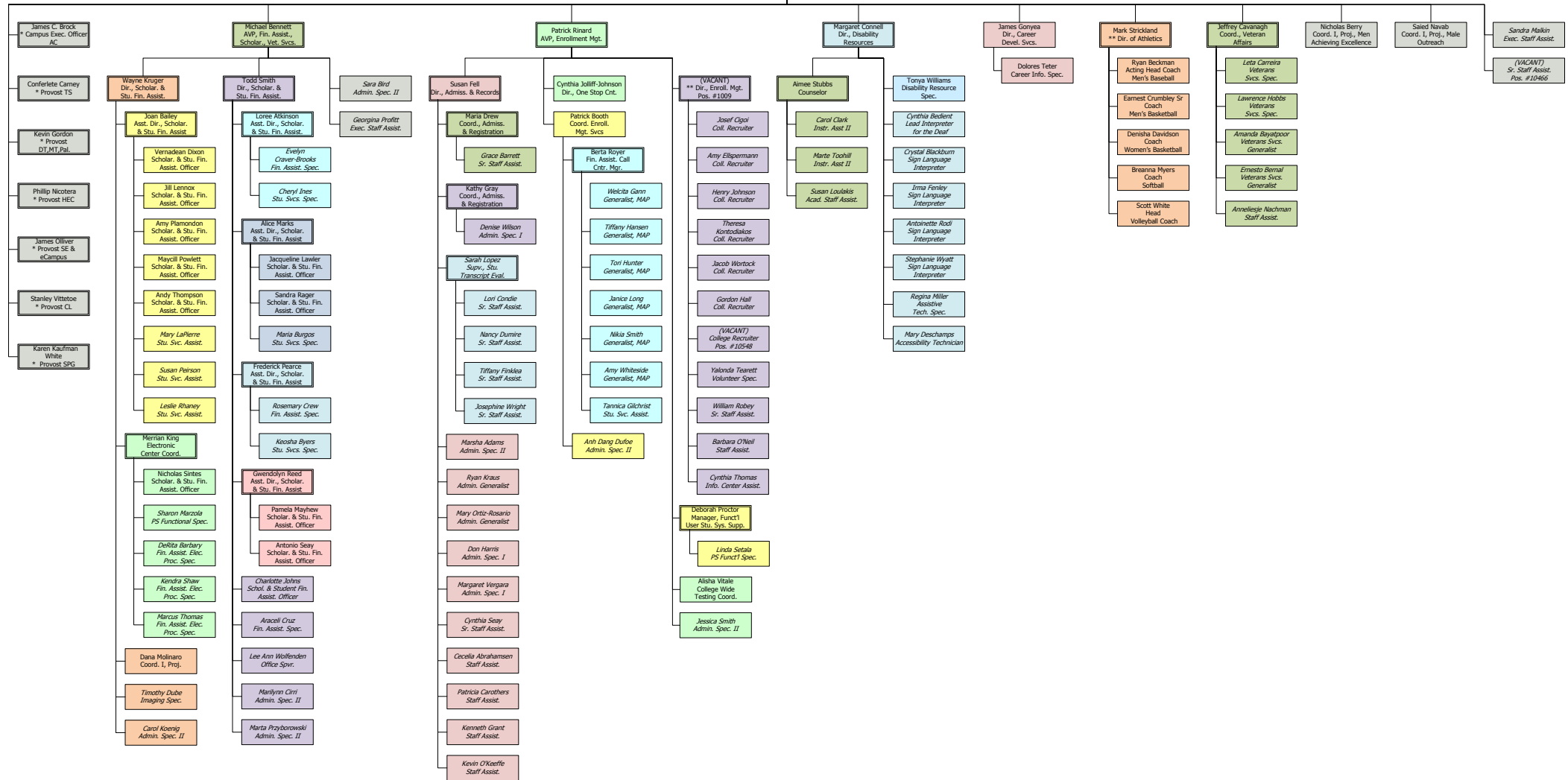
* Currently, the VP, Workforce & Continuing Education has the dual role of CL Campus Provost

** Mark Strickland has dual role as Assoc. Provost of DT/MT and Dir. of Athletics.

Kay Burniston VP, Bacc. Programs, Academic Eff. & UPC



Tonjua Williams VP, Academic & Student Affairs

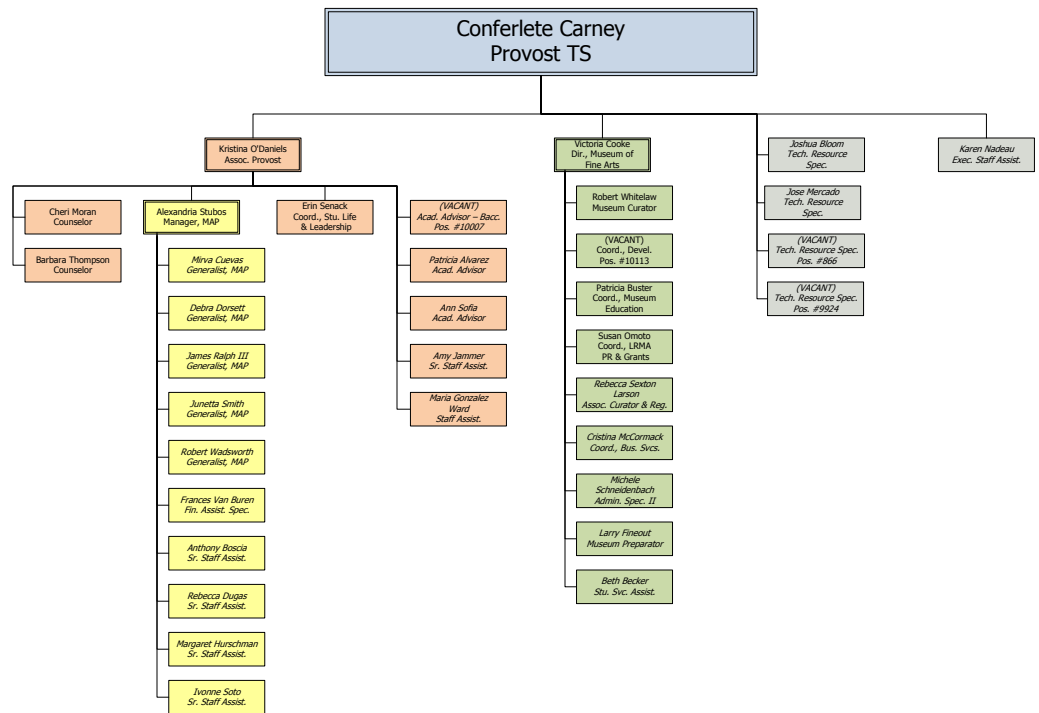


* The Organizational charts for each Provost appear on subsequent pages.

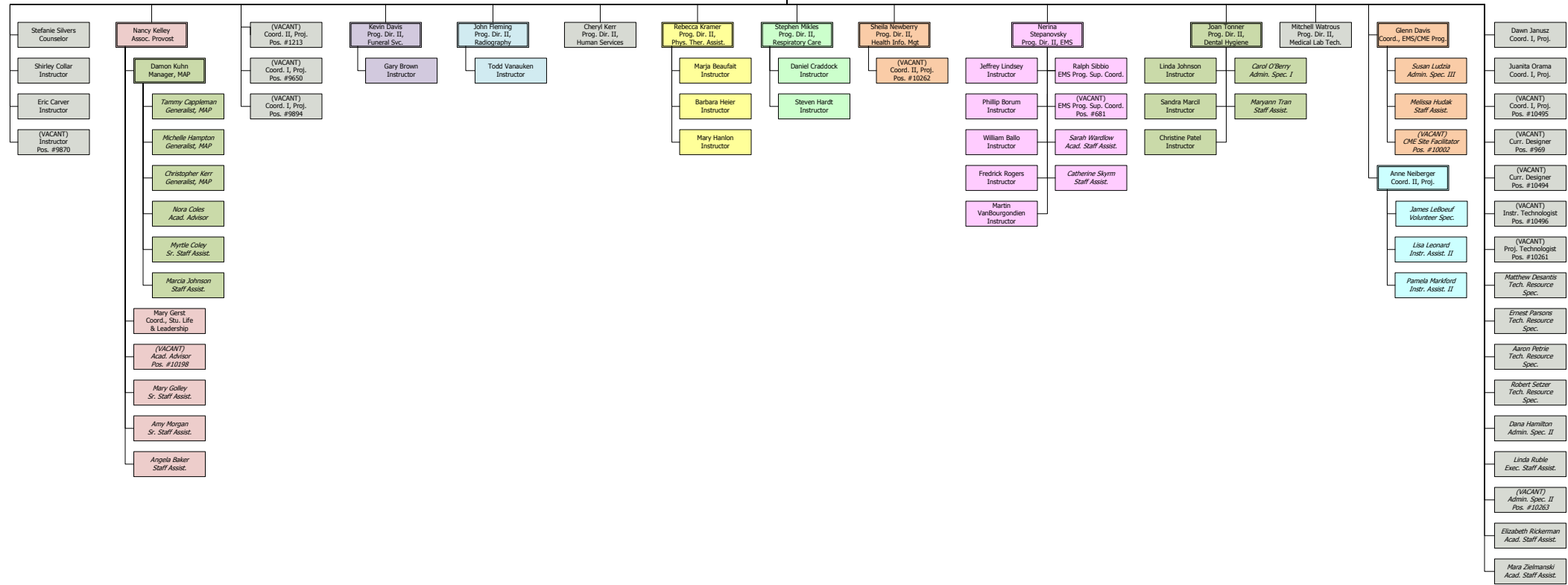
** Mark Strickland has dual role as Assoc. Provost of DT/MT and Dir. of Athletics.

Information as of:
01/30/12
Printed/Published:
2/6/2012

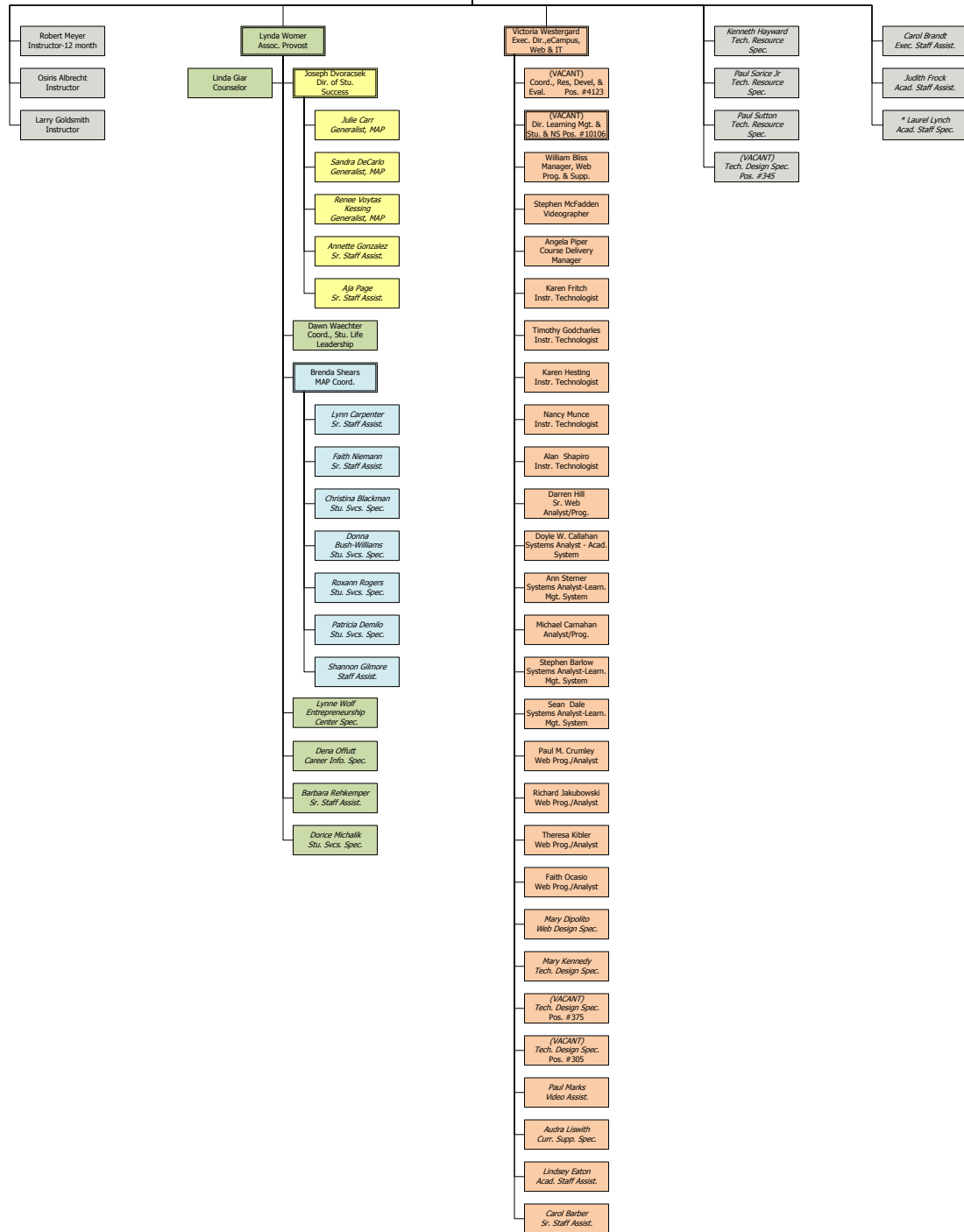
KEY:
Double Box..... Supervisors
Single Box..... Support Staff
Non Italic..... A & P and FAC Position
Italic..... Career Staff Position



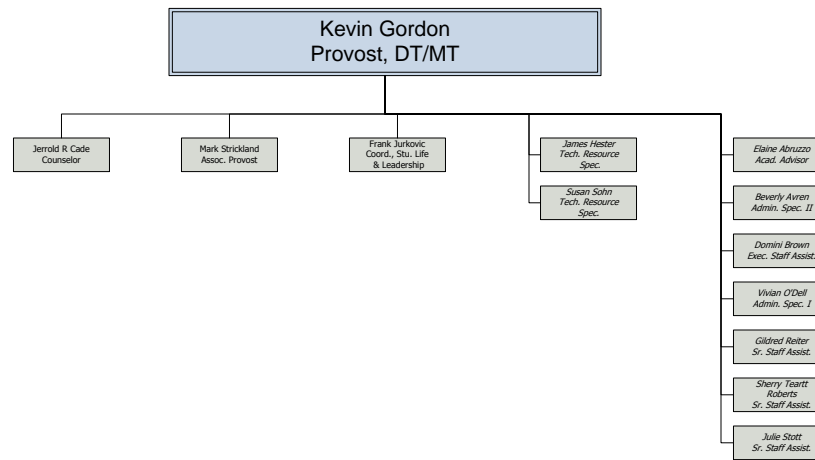
Phillip Nicotera
Provost HEC



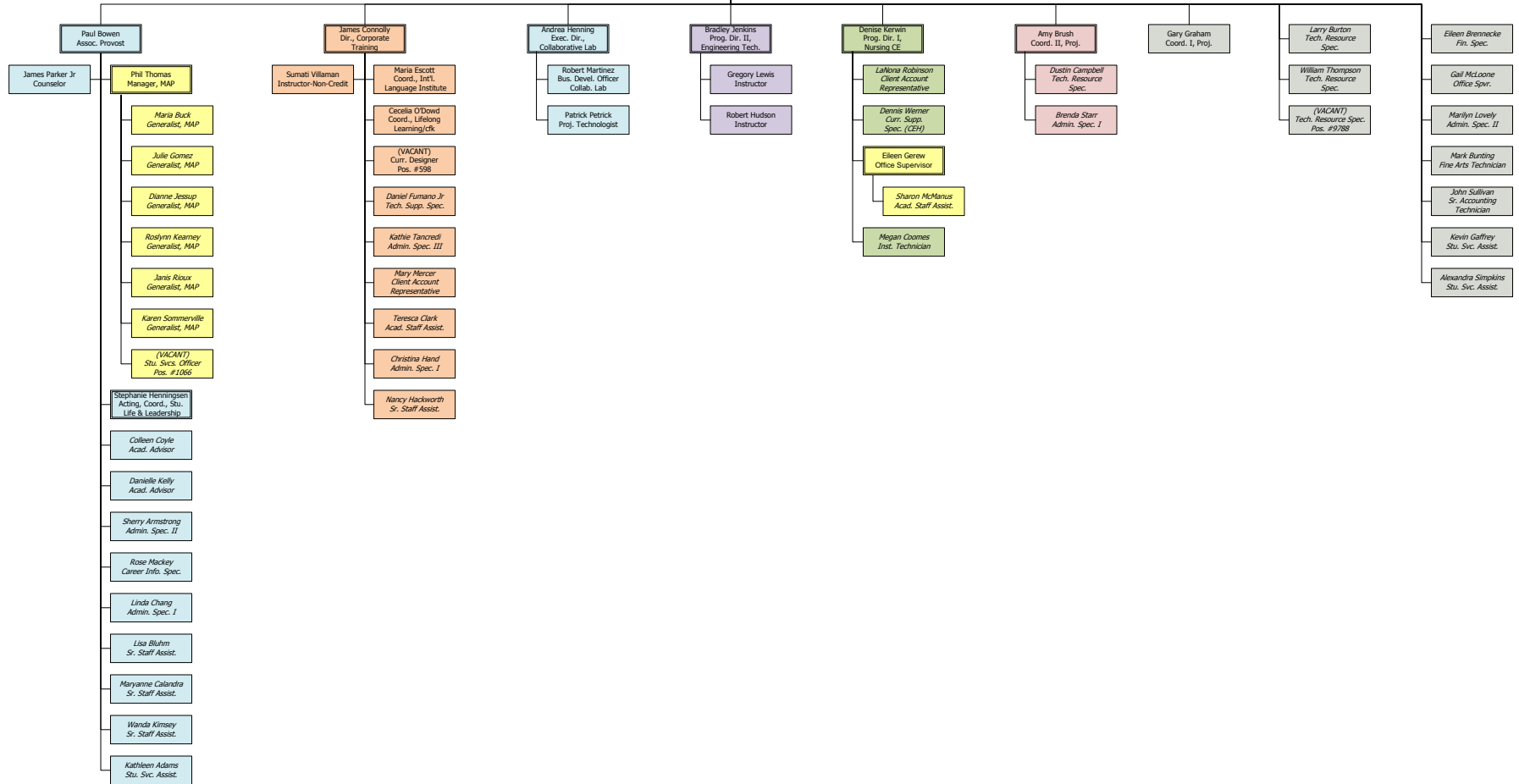
James Olliver
Provost SE & eC



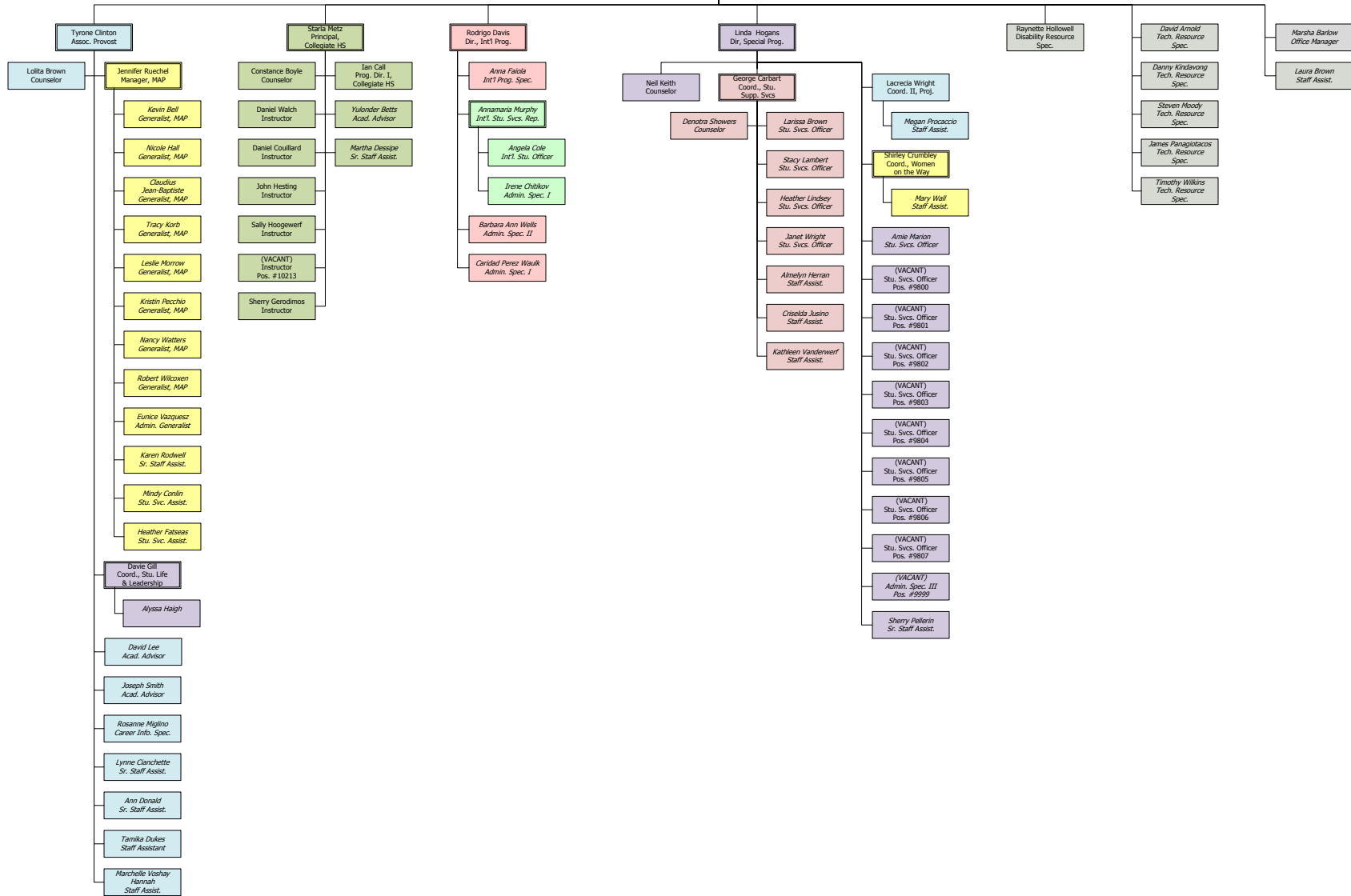
* Assigned to work under Sheryl Peterson, Soc. Science.
Budgeted employee under SE Provost.



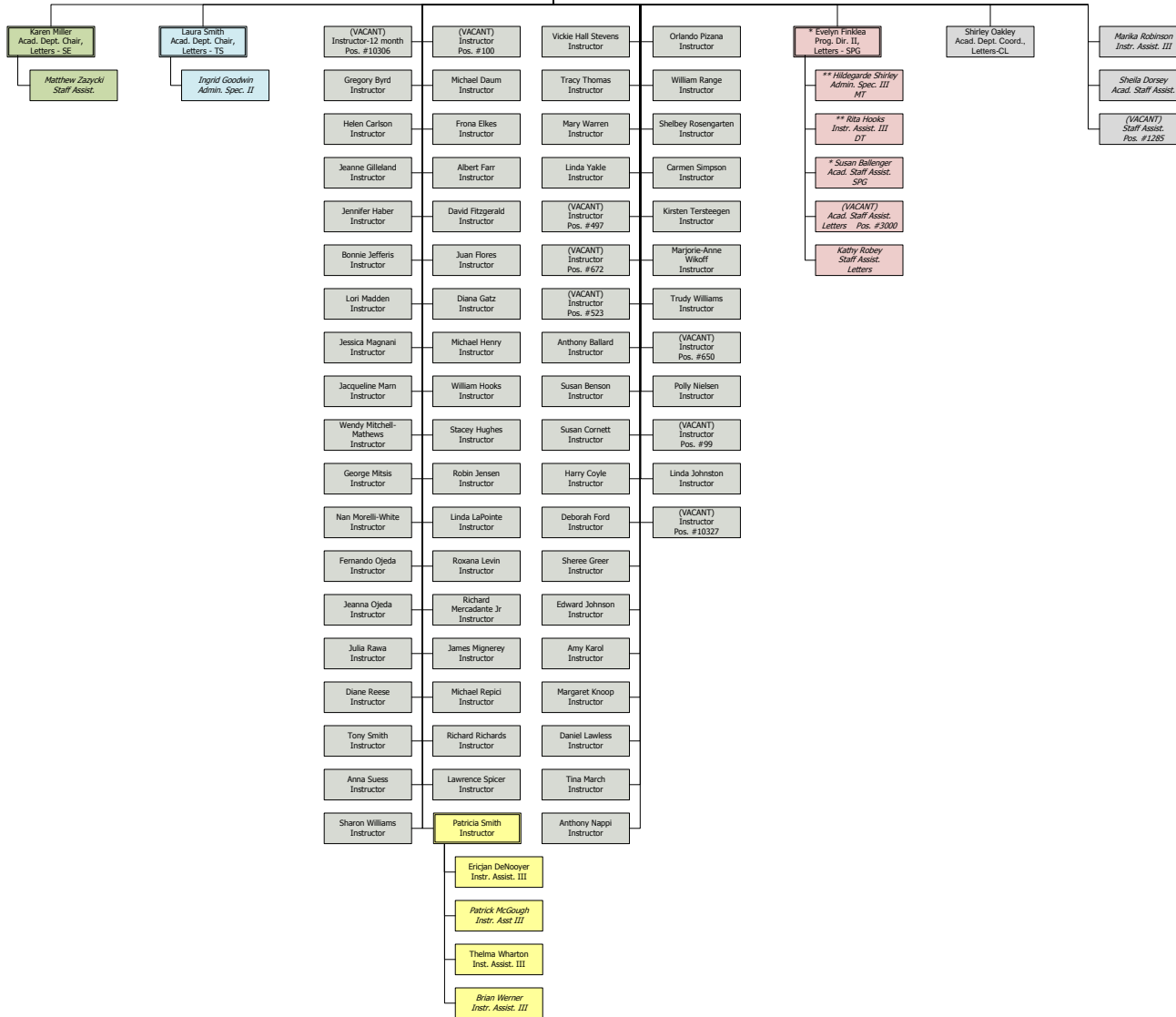
Stanley Vittetoe
* VP, Workforce & CE/Provost CL



Karen Kaufman White Provost SP/G

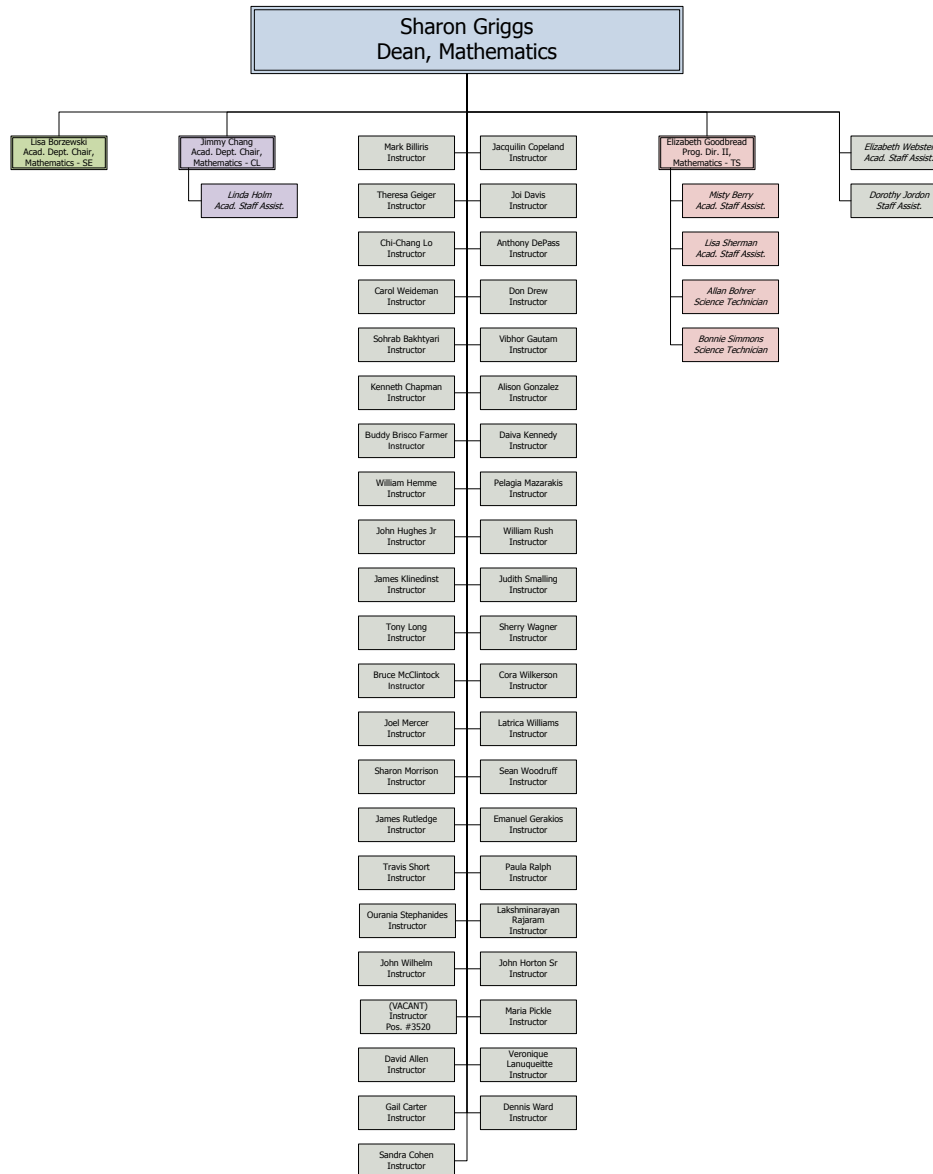


Martha Campbell Dean, Communications

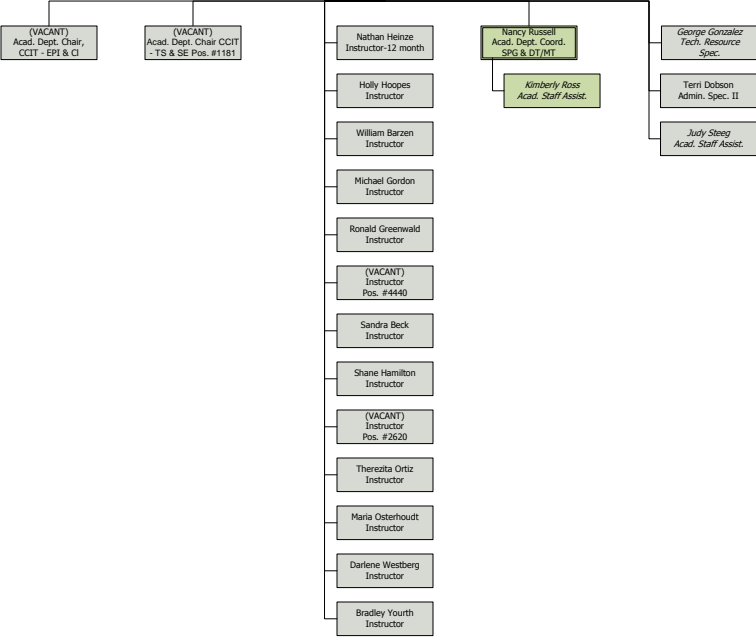


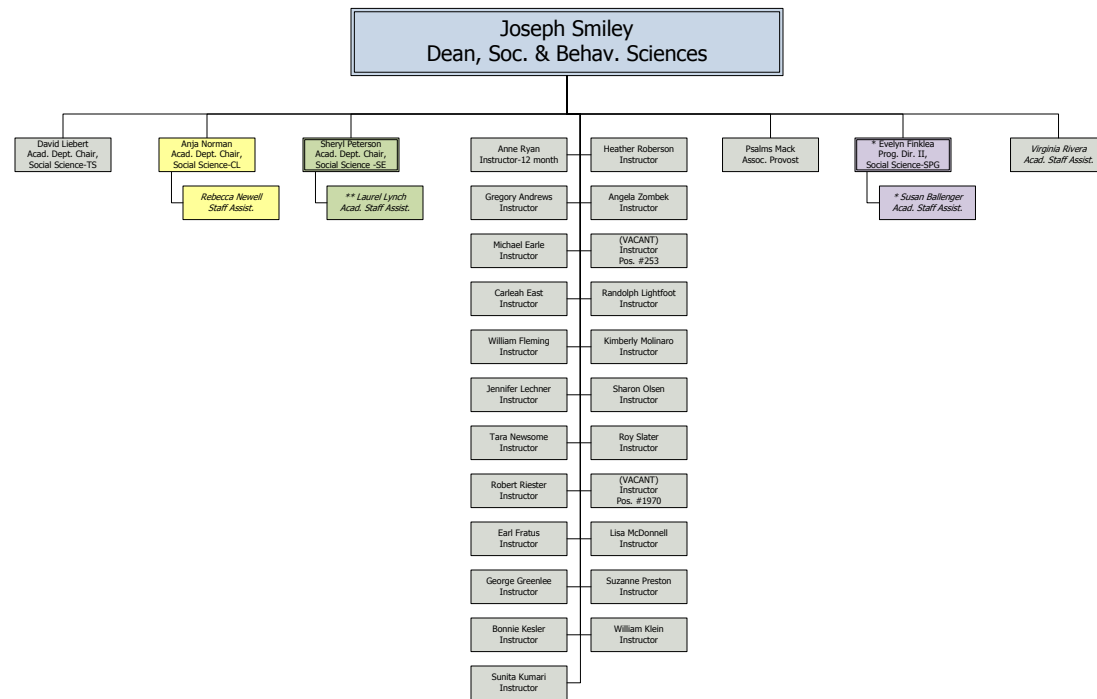
* Evelyn Finklea is Program Director for two disciplines (Communications and Social & Behavioral Sciences), her dual position is in each of the charts for those deans.
Budgeted employee under Evelyn Finklea at SPG campus.
Susan Ballenger is her staff assistant at SPG campus.

** Assigned to Downtown/Midtown Campus.
Budgeted employee under Evelyn Finklea at SPG campus.
Support Staff



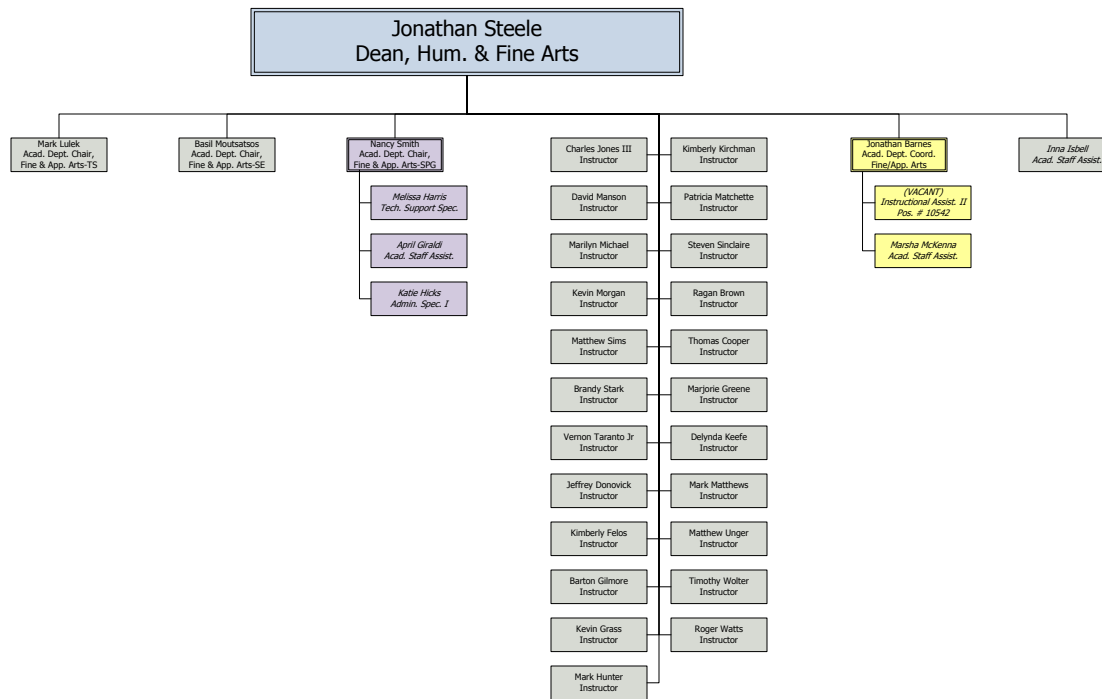
Sharon Setterlind
Dean, Coll. of Comp. & Info. Tech.

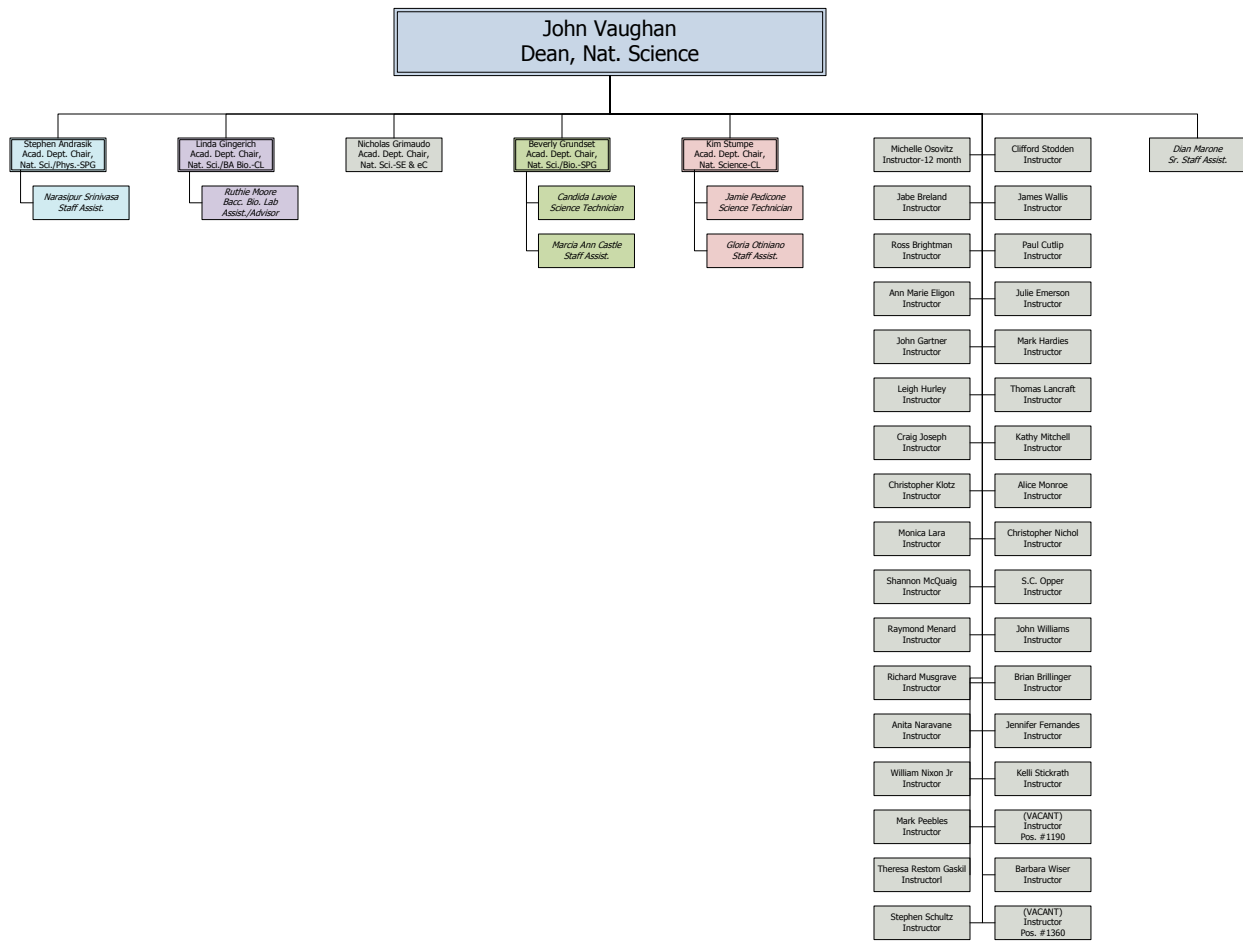


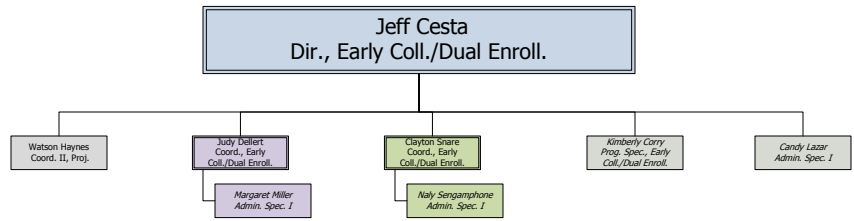


* Evelyn Finkbea is Program Director for two disciplines (Communications and Social & Behavioral Sciences). Her dual position is in each of the charts for those deans. Susan Ballenger is her staff assistant at SPG campus.

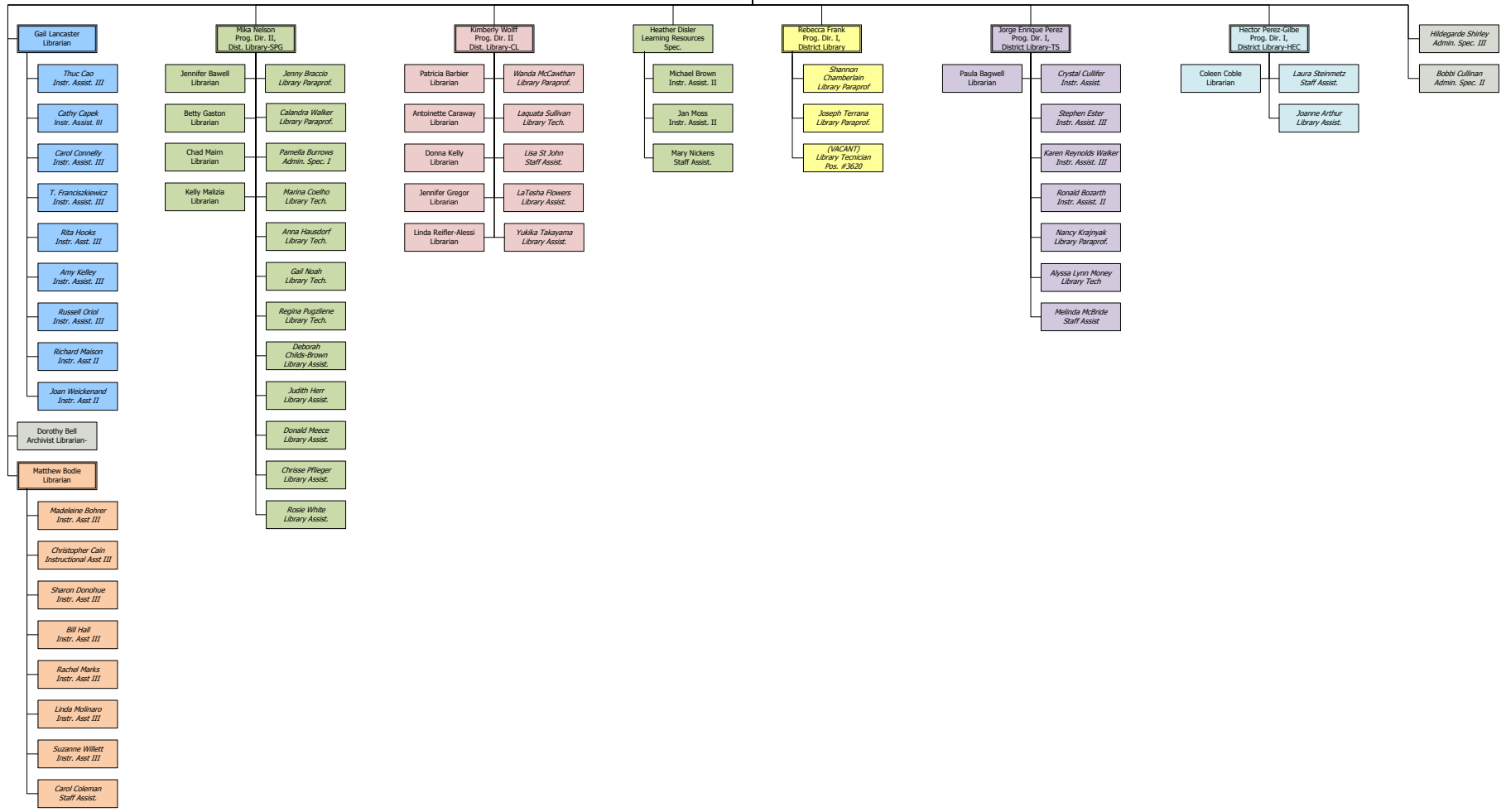
** Assigned to work under Sheryl Peterson. Budgeted employee under SE Provost.

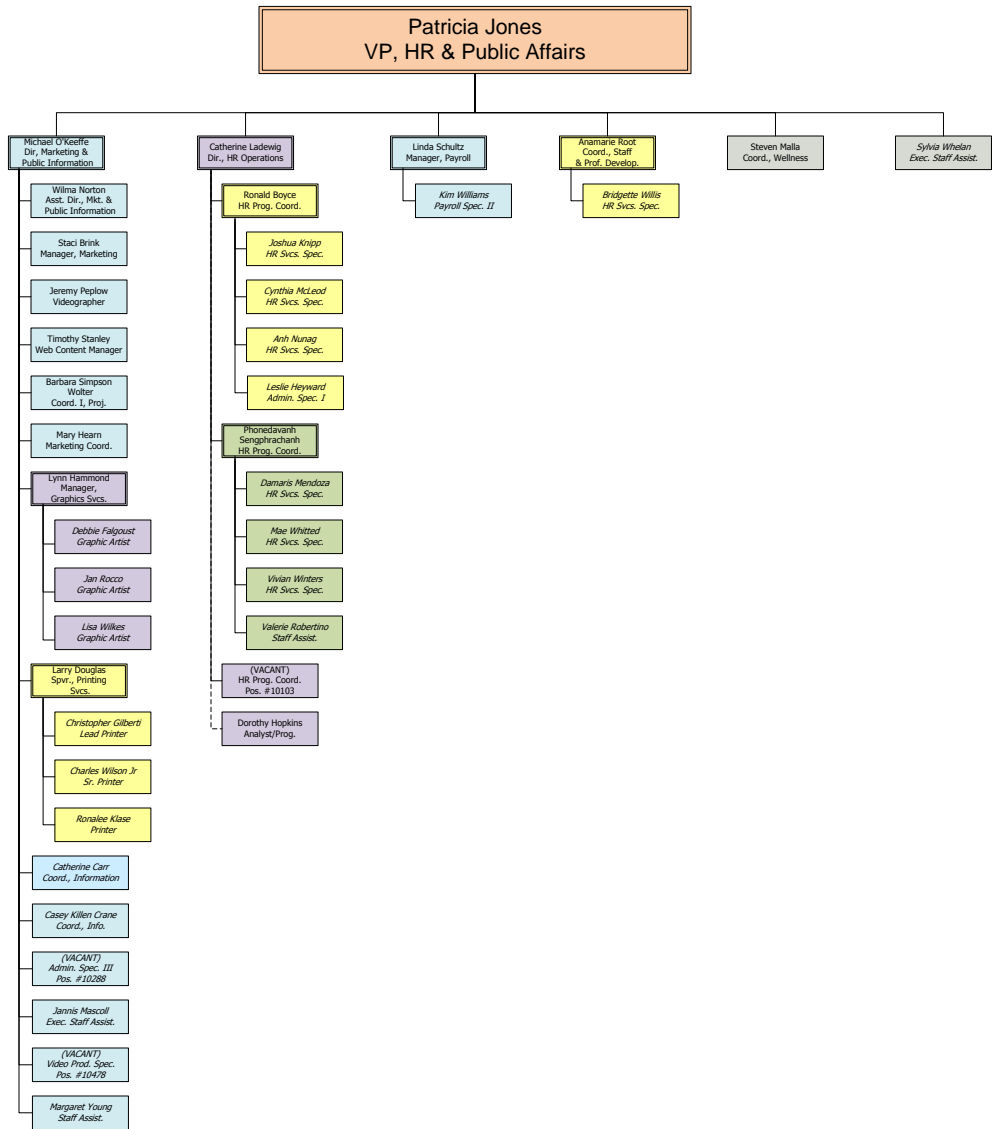






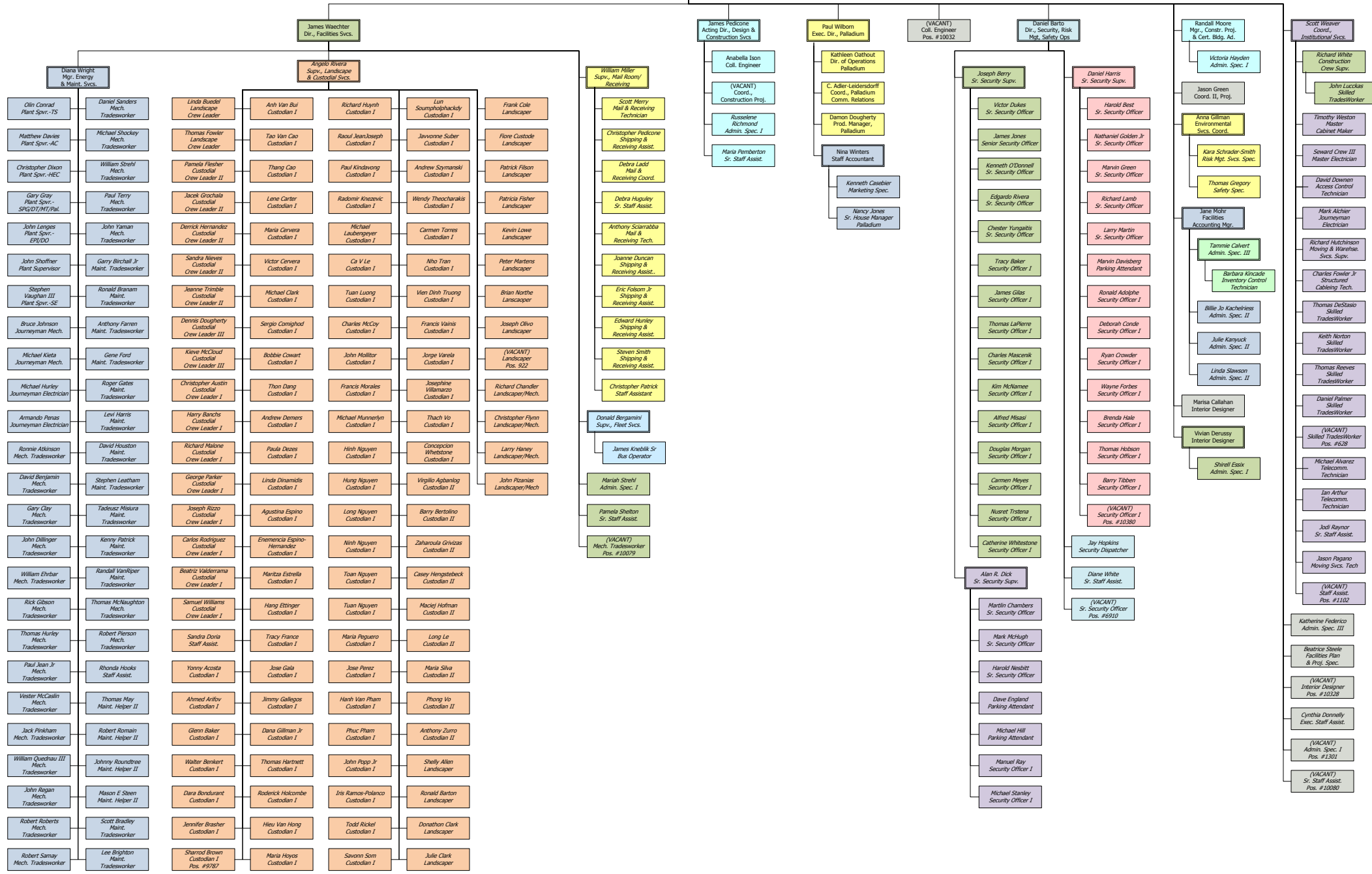
Joseph Leopold Dir. of Learning Resources

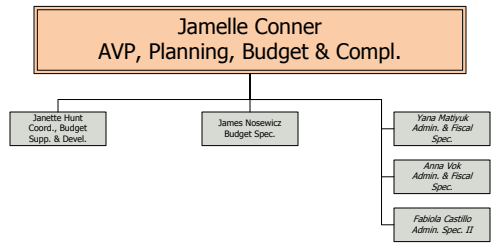




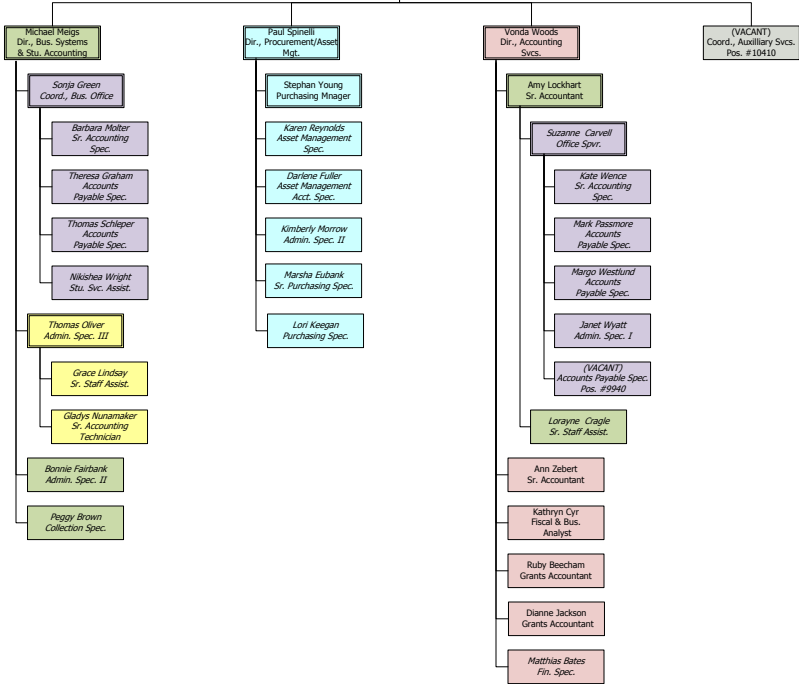
* Member of college-wide Flex Team – A deployable team that assists temporarily with administrative functions or duties during times of high departmental or campus needs.

Susan Reiter
VP, Fac. Planning & Institutional Svcs.





Theresa Furnas
AVP, Fin. & Bus. Services



Dayaghan Pendharker AVP, Info. Systems

