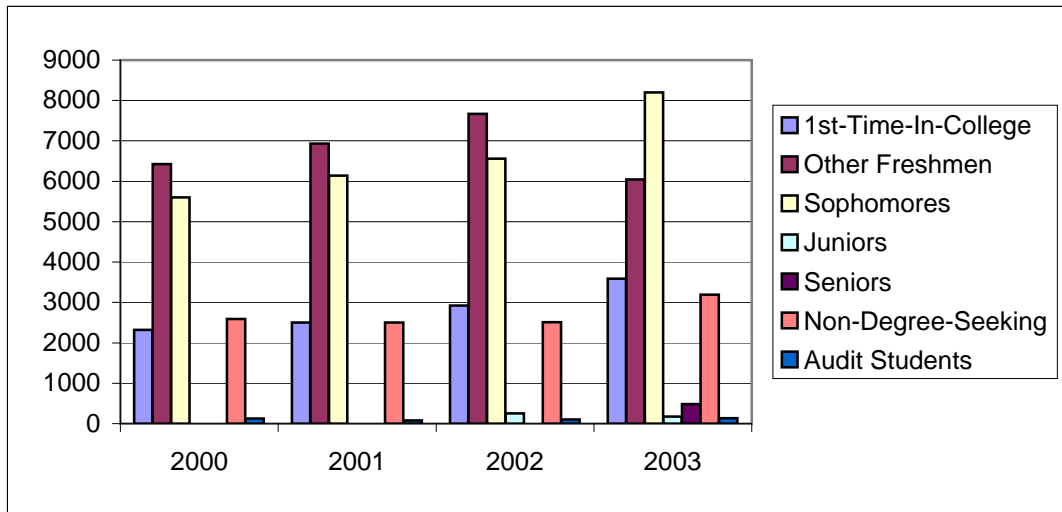


TABLE 14
OPENING FALL HEADCOUNT ENROLLMENT
BY CLASS STANDING
CREDIT STUDENTS*
 Fall 2000 - Fall 2003

| | 2000 | 2001 | 2002 | 2003 |
|----------------------------|----------------------|----------------------|----------------------|----------------------|
| 1ST-TIME-IN-COLLEGE | 2324 13.6% | 2501 13.8% | 2920 14.6% | 3589 16.5% |
| OTHER FRESHMEN | 6422 37.6% | 6932 38.2% | 7667 38.3% | 6042 27.7% |
| SOPHOMORES | 5601 32.8% | 6141 33.8% | 6561 32.8% | 8200 37.6% |
| JUNIORS | | | 250 1.2% | 176 0.8% |
| SENIORS | | | N/A | 482 2.2% |
| NON-DEGREE-SEEKING | 2588 15.2% | 2500 13.8% | 2512 12.6% | 3192 14.6% |
| AUDIT STUDENTS | 126 0.7% | 82 0.5% | 105 0.5% | 134 0.6% |
| COLLEGE TOTAL | 17061 | 18156 | 20015 | 21815 |



*Includes students enrolled in credit classes at the end of the first week of classes, audit students in credit courses and upper division students beginning Fall 2002

**Student Information provided by Upper Division Office

SPC Office of Institutional Research

Source: SIRCRDCNTS

Revised: 4/14/04