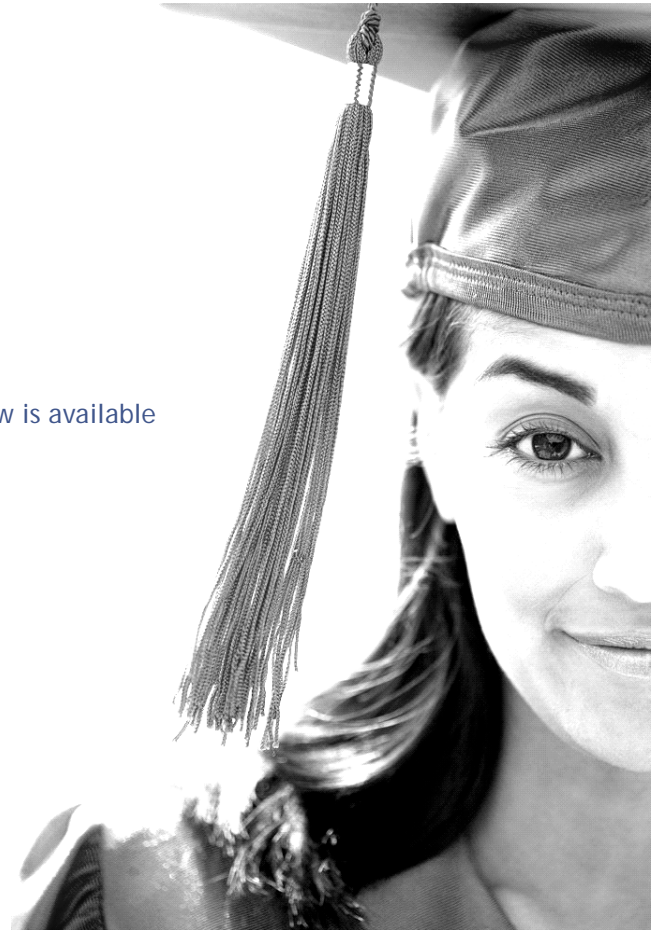


# Respiratory Care

## Action Plan Follow-up and Evaluation Report 2007-08 Comprehensive Academic Program Review \*

### *Associate in Science Degree in Respiratory Care*

\* The complete 2007-08 Respiratory Care  
Comprehensive Academic Program Review is available  
on the Educational Outcomes website:  
<http://it.spcollege.edu/edoutcomes/>



Department of Institutional Research  
and Effectiveness  
St. Petersburg College

October 2009



## Action Plan Follow-up and Evaluation Report

Program: Respiratory Care

Date Completed: October 3, 2009

Prepared By: Steve Mikles

### I. Action Plan Item Status

	Action Item	Completion Status/Date	Status Explanation
1	To obtain Web and IT support to assist with student recruitment.	Completed June 2009	Web and IT assisted with Respiratory Care's website revisions which can be viewed at <a href="http://www.spcollege.edu/hec/resp">www.spcollege.edu/hec/resp</a> .
2	To improve student recruitment with support from the Manatee Community College (MCC) collaborative program.	Completed June 2009	The collaborative program with MCC has been a great success. It added six extra students per year at a time when we struggled to fill the program.
3	To gain support from the dual enrollment program to help with student recruitment.	Not Completed	Unfortunately there has been no student interest in this program.

Respiratory Care  
2007-08 Action Plan Follow-up and Evaluation Report  
Department of Institutional Research and Effectiveness

© Copyright St. Petersburg College, October 2009. All rights reserved.





## II. Non-Completed Action Plan Items and Plan for Completion

Action Item	Completion Date	Completion Plan
1 To gain support from the dual enrollment program to help with student recruitment.	Closed October 2009	At this juncture, September 2009, we can probably dismiss this action item as enrollment for August 2010 is full, and close to being filled for August 2011.

## III. Evaluation of the Impact of Action Plans on Program Quality

The website revisions which included enhanced links, have resulted in better exposure to web-savvy candidates, and retention of applicants primarily through the 'Request for more information' survey, and email link to Steve Hardt to arrange Clinical Shadowing experience. These are both part of the application checklist.

The Manatee Community College (MCC) cohorts had all six slots filled during August 2008 and 2009. The MCC cohort has had a very positive impact on recruitment, as six extra students were admitted per year at a time when we struggled to fill the program.

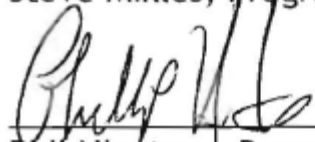
Both SPC's collaboration with MCC, and the enhanced program webpage have had a positive influence on student recruitment, and ultimate matriculation into the program. These two essentially "no-cost" strategies have been very influential in providing full freshmen classes for the last two years.



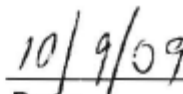
Steve Mikles, Program Director



Date



Phil Nicotera, Provost



Date

Respiratory Care  
2007-08 Action Plan Follow-up and Evaluation Report  
Department of Institutional Research and Effectiveness



Data and information contained herein cannot be used without the express written authorization of the Saint Petersburg College. All inquiries about the use of this information should be directed to the Director of Institutional Research and Effectiveness at Saint Petersburg College.

© Copyright St. Petersburg College October 2009. All rights reserved.