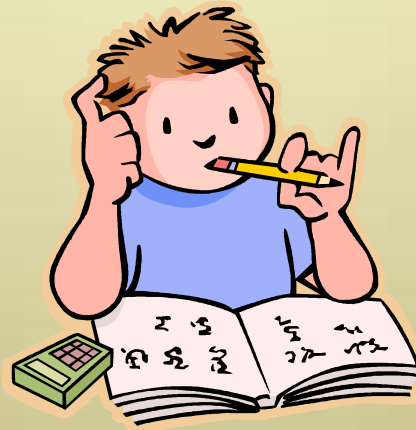
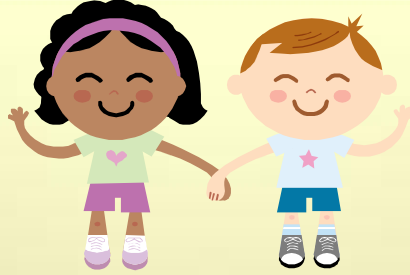


# SPCHS - PTSA

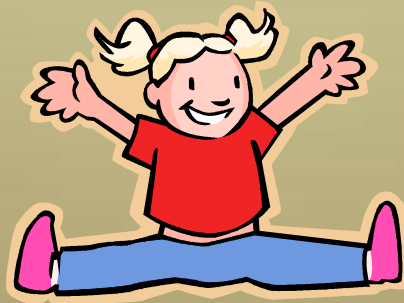


**What does the SPCHS -PTSA do?**





Each year, the PTSA supports a wide variety of school events and student needs.





# Fall Festival

The Fall Festival is a Homecoming event. The dance is open to all grade levels. The Junior Class Officers assist with planning this event. The different grade levels compete in the creation of a display in line with the theme of the event.

Estimated cost: \$500  
Volunteers needed: 4





# Reflections

Reflections, provides an opportunity for students to be recognized for their artistic talents. Students compete with other students in Pinellas County in the categories of visual art, dance choreography, musical composition, film production, photography and literature. Winners go on to compete at the State level.

Estimated cost: \$150

Volunteers needed: 3



# Prom

Prom is open to all grade levels. The Senior Class picks the theme, and assists with ticket sales and invitations. Prom includes dinner and music at a beautiful venue.

Estimated cost: \$3,000  
Volunteers needed: 6



Prom outfits made entirely out of DUCT TAPE!



# Move-up Awards and Graduation

The Move-up ceremony is a tradition at SPCHS where students symbolically “shift” positions in the auditorium as they move up a grade level. Awards and gift cards are given to students at all grade levels for outstanding contributions and academic achievement.

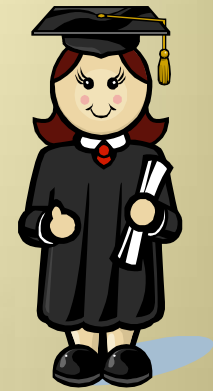


Estimated cost: \$500  
Volunteers needed: 1





# Senior Celebration



Senior Celebration provides an opportunity for families of graduating students to share lunch together. It is held at ChaCha Coconuts at the Pier in St. Petersburg. It takes place after the Move-Up Ceremony and before Graduation.

Estimated cost: \$500  
Volunteers needed: 3





# Spring Fling

Spring Fling is open to all grade levels however it is primarily a Sophomore event because Juniors and Seniors have already finished their college classes. The Sophomore Class assists with the planning. It is a fun event full of games, activities and treats for the students.

Estimated cost: \$200

Volunteers needed: 3





# Student of the month

Each month a student is chosen at each grade level that is an outstanding example of a SPCHS student. The students are given an award and a \$20.00 gift certificate.

Estimated cost: \$500





# Teacher and Principal Fund

This fund provides reimbursement to the teachers and administrators at SPCHS for purchases that they make out of their own pocket to benefit our students. Such items may include: prizes, awards, treats etc.

Estimated cost: \$500



# Awards

The State and National PTA offer numerous awards to the local units. We need volunteers who would evaluate SPCHS's eligibility for the awards and submit the applications by the deadline.

Volunteers needed: 3





# Fund-raising

Fund-raising is an important part of helping to meet the needs of the students throughout the year. We plan on having one fundraising event this year. The Student Government will have input on how they would like to fund-raise. They will need parent support.



Volunteers needed: 3



# Other PTA Activities

The SPCHS PTA has various other expenses such as: Supporting Relay for Life, T-shirts for our competing teams (Brain Bowl, Debate Club) and operating costs.

Estimated cost: \$400



Did you know that a portion of your PTSA membership fee goes to support the PTA at the State and at the National Level?



# What is happening at the State level to support children?



- Arts in Education
- Class Size Reduction
- No Door to Door Sales
- Drug Free School Zones
- Adequate Public Education Funding
- Green Schools
- Indoor Air quality
- Teacher Preparation
- Social and Welfare Services
- And many more....



Go to [www.floridaPTA.org](http://www.floridaPTA.org) for complete information

# What has the National PTA done to support children?



- Child labor laws
- Kindergarten
- Public health service
- Hot lunch/breakfast program
- Juvenile justice system
- Mandatory immunizations
- Seat belts
- Bicycle helmets
- Child trafficking
- And many more.....



Go to [www.PTA.org](http://www.PTA.org) for complete information

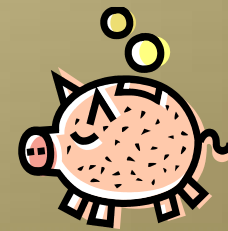
# How can you help?

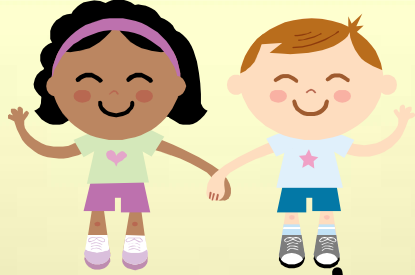


With financial support,  
ideas and suggestions or  
donation of your time

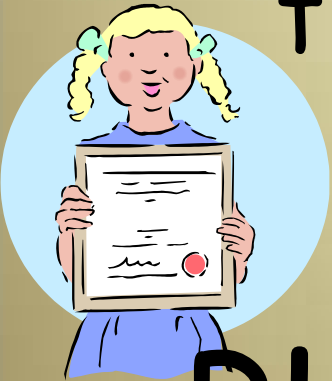


Please take a moment to help  
by signing up at one of the posters



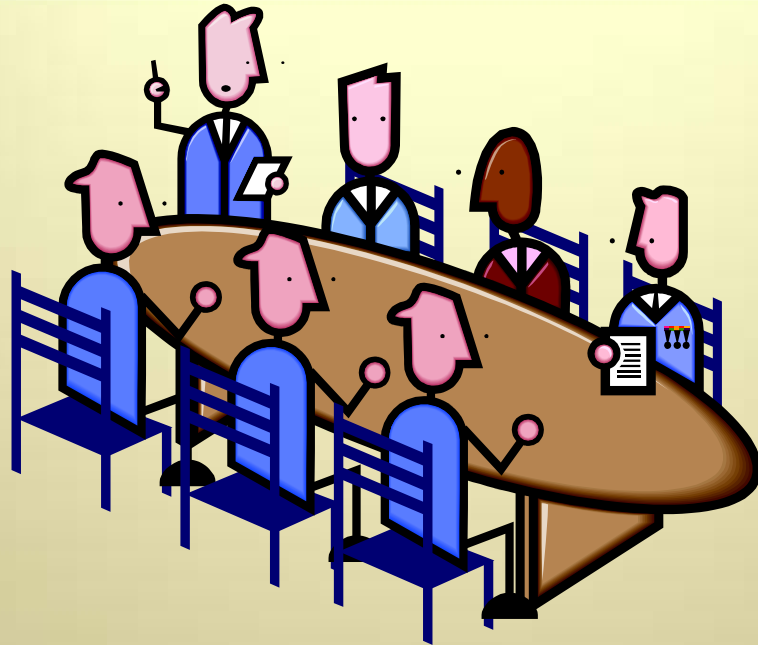


Let's work together to make these high school years the best for our kids.



Please Support the  
SPCHS - PTA





# PTA Committee Members

SPCHS Principal: Starla Metz

PTA President: Maria Wyatt

PTA Vice President: Cheryl Mallory

PTA Treasurer: Elizabeth Nash

PTA Recording Secretary: Brenton Nash

PTA Communications Secretary: Cici Aguilar