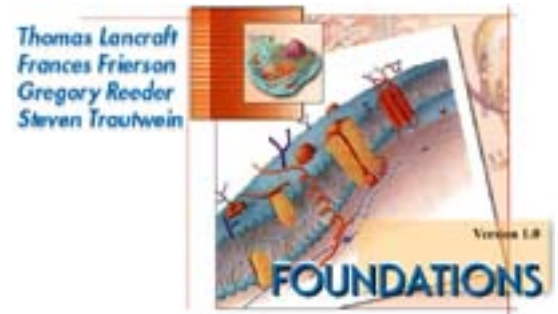


# Tissues Anatomy Overviews & Animations

## Epithelial Tissues



### Directions:

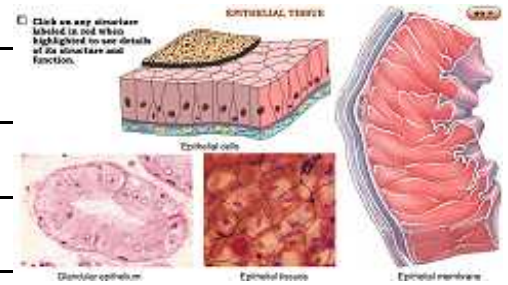
Insert and install your Interactions: Foundations CD.

- Click the "Contents" button,
- Open the Tissue Level of Organization file,
- Click on Anatomy Overviews,
- Work through Epithelial Tissues.

Complete the following worksheet and add it to your notes.

### I. Interactions Foundations CD/Contents/Tissue Level/Anatomy Overviews/Epithelial Tissues

- Where are *epithelial tissues* found? \_\_\_\_\_  
 \_\_\_\_\_  
 \_\_\_\_\_  
 \_\_\_\_\_



- Describe these three basic shapes of *epithelial cells*:

*squamous*: \_\_\_\_\_  
 \_\_\_\_\_

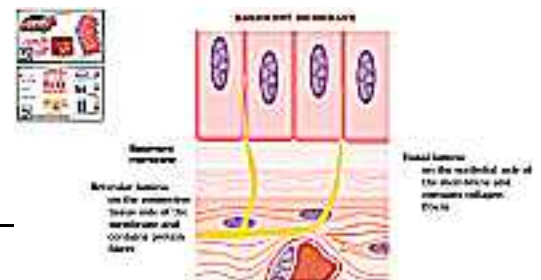
*cuboidal*: \_\_\_\_\_  
 \_\_\_\_\_

*columnar*: \_\_\_\_\_  
 \_\_\_\_\_



- Describe the positional relationship between the *epithelial surface cells*, *basal surface*, *basement membrane*, and *connective tissue*.

\_\_\_\_\_  
 \_\_\_\_\_



5. Describe each of the following *epithelial tissue* arrangements:



*simple:* \_\_\_\_\_

*stratified:* \_\_\_\_\_

*pseudostratified:* \_\_\_\_\_

*transitional:* \_\_\_\_\_

6. Observe and describe each of the following tissues. Name example(s) of where each can be found and describe the function of each. You should be able to identify each epithelial type by sight. Study their appearance and characteristics. Correlate their physical structure with their function.

*simple squamous epithelium:* \_\_\_\_\_



*stratified squamous epithelium:* \_\_\_\_\_



*Keratin* is a water proofing protein. What are the functions of *keratinized* and *nonkeratinized* stratified squamous epithelium.

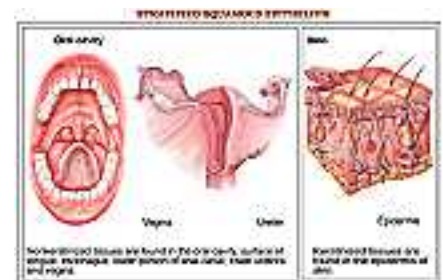
\_\_\_\_\_

\_\_\_\_\_

\_\_\_\_\_

Where are each found? \_\_\_\_\_

\_\_\_\_\_



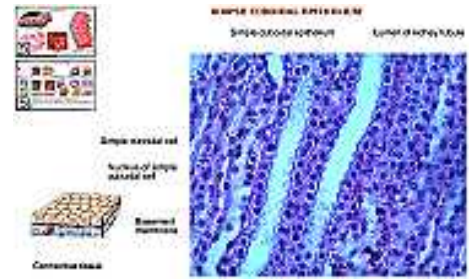
simple cuboidal epithelium: \_\_\_\_\_

---

---

---

---



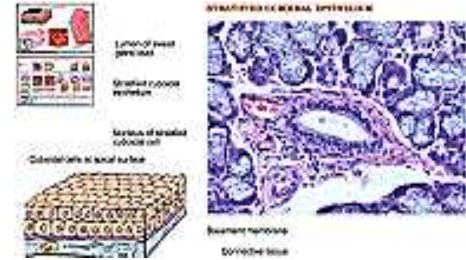
stratified cuboidal epithelium: \_\_\_\_\_

---

---

---

---



simple columnar epithelium: \_\_\_\_\_

---

---

---

---



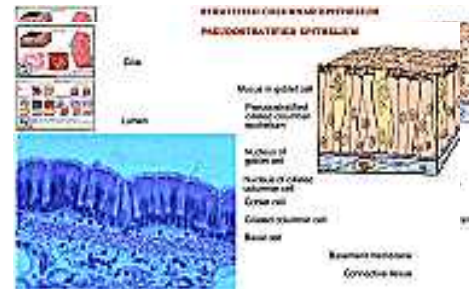
pseudostratified columnar epithelium: \_\_\_\_\_

---

---

---

---



What is the function of *goblet cells*? \_\_\_\_\_

---

---

---

---

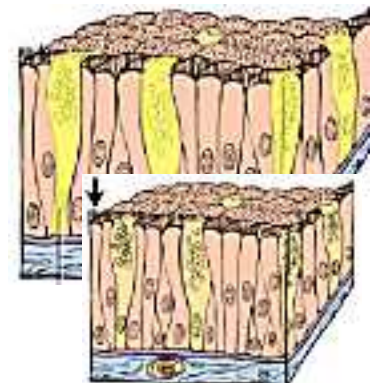
What is the function of *cilia* (when present)? \_\_\_\_\_

---

---

---

---



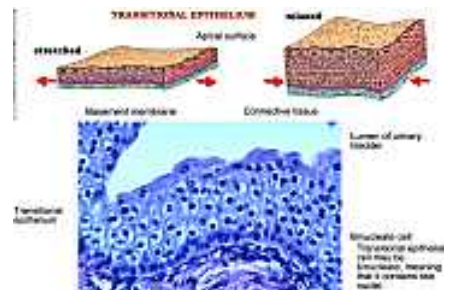
transitional epithelium: \_\_\_\_\_

---

---

---

---



## Glandular Epithelium

Return to the opening Epithelial Tissue window on your CD.  
Click *Glandular Epithelium*.

Identify functional differences between *exocrine* and *endocrine glandular epithelia*?

---



---



---



---



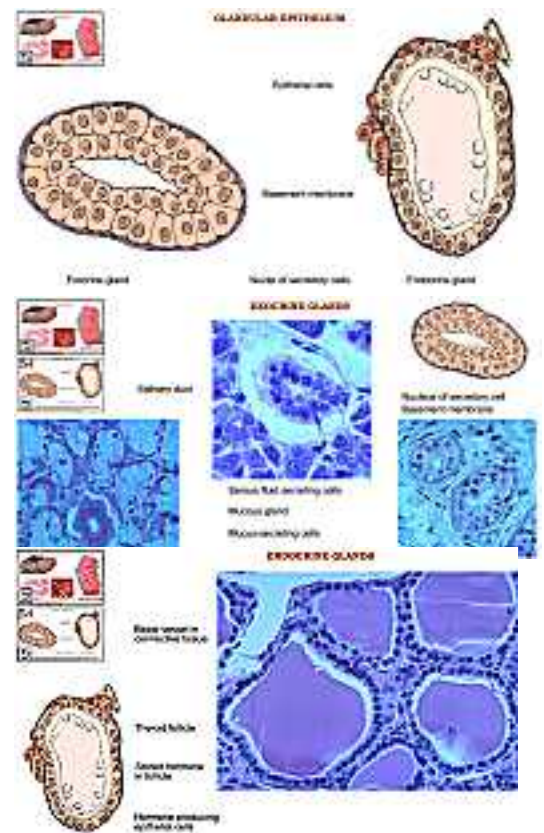
---



---



---



## Epithelial Membranes

Once again, return to the first Epithelial Tissue window. Click on *Epithelial Membranes*.

Define/describe *epithelial membrane* structure.



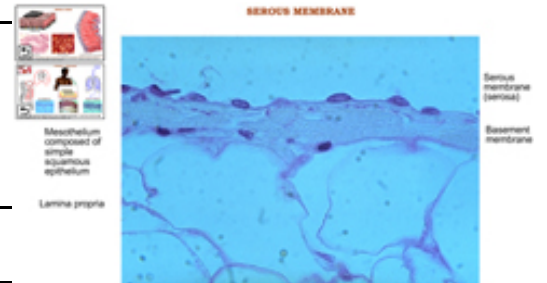

---



---

Describe structure, function, and location of each epithelial membrane type:

*Serous:* \_\_\_\_\_  
 \_\_\_\_\_



*Cutaneous:* \_\_\_\_\_  
 \_\_\_\_\_  
 \_\_\_\_\_



*Mucous:* \_\_\_\_\_  
 \_\_\_\_\_  
 \_\_\_\_\_  
 \_\_\_\_\_

