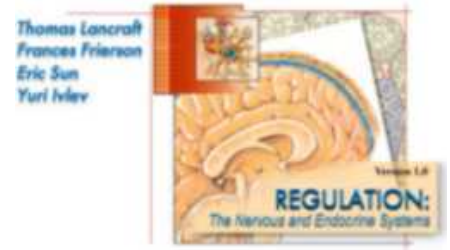


Nervous System:

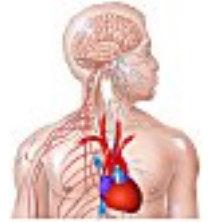
Introduction to Structure and Function of the Nervous System



Directions:

- Insert your *Regulations CD*
- Click the "Contents" button,
- Open the *Nervous System File*,
- Click *Animations*,
- Click *Introduction to Structure and Function of the Nervous System*

Introduction



- Describe the primary function of the nervous system. _____

 - How does this function underlie human regulation? _____

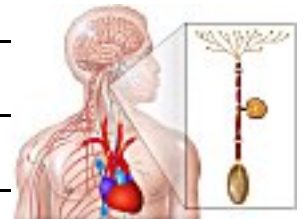
 - Name the three neuron types. _____

Neuron Structure & Function

- What is the function of *motor neurons*? _____

- What are the two functions of *sensory neurons*? _____

- What is the function of *association neurons*? _____



System Organization

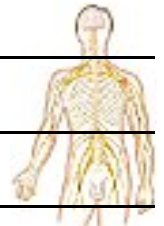
5. What are the two subsystems of the nervous system? _____



6. Name neuron functions for the *central nervous system (CNS)*. _____

7. Name neuron functions for the *peripheral nervous system (PNS)*. _____

8. Where is PNS tissue located? _____



9. Explain the functions of two types of neurons that form the *somatic nervous system* division of the PNS.

sensory neurons - _____

motor neurons - _____



10. a. Explain the functions of two types of neurons that form the *autonomic nervous system* division of the PNS.

sensory neurons - _____

motor neurons - _____



b. Describe the two divisions of the motor portion of the ANS.

Sympathetic - _____

Parasympathetic - _____

c. Do these divisions work voluntarily or involuntarily? What effectors are stimulated by each?

11. Explain the functions of the two types of neurons that form the *enteric nervous system* (ENS) divisions of the PNS.

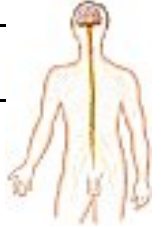


Sensory neurons - _____

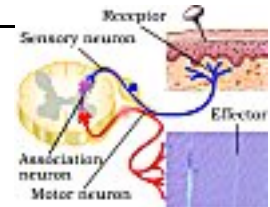
Sensory neuron

Motor neurons - _____

12. What controls all the nervous pathways in the body? _____



13. a. What is the function of *reflex arcs*. _____



b. Name the parts of a reflex arc. _____

14. Contrast between somatic and autonomic reflex arcs. _____

