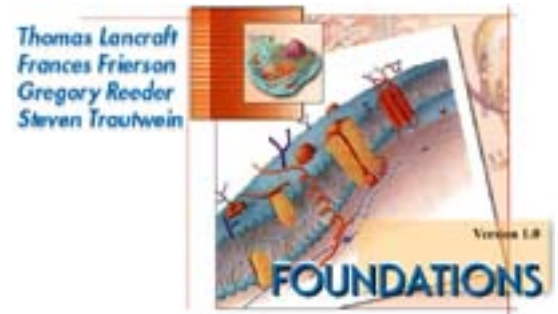


# Tissues Anatomy Overviews & Animations

## Muscle & Nerve Tissues



### Directions:

Insert and install your Interactions: Foundations CD.

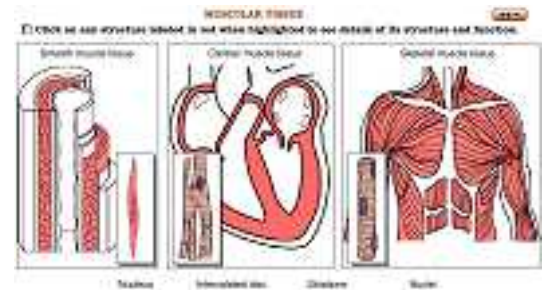
- Click the "Contents" button,
- Open the Tissue Level of Organization file,
- Click on Anatomy Overviews,
- Work through Muscular Tissues.

Complete the following worksheet and add it to your notes.

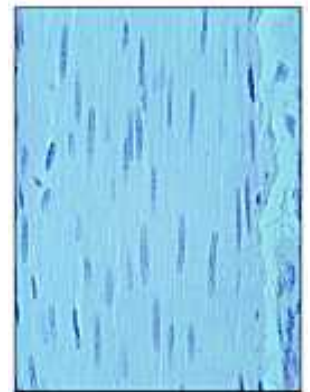
### Interactions Foundations CD/Contents/Tissue Level/Anatomy Overviews/Muscular Tissues

Follow the above navigation to the Muscle Tissue module on your Interactions CD. Enter the following critical focus point information in your notebook.

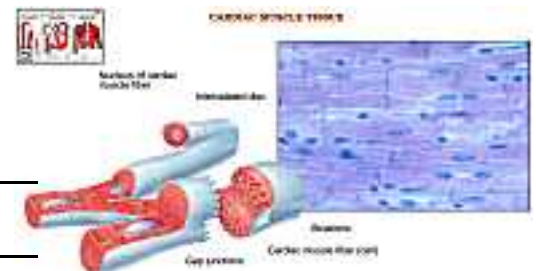
- Learn to identify each of the following tissues *by sight*. Describe function and location of each muscle tissue type:



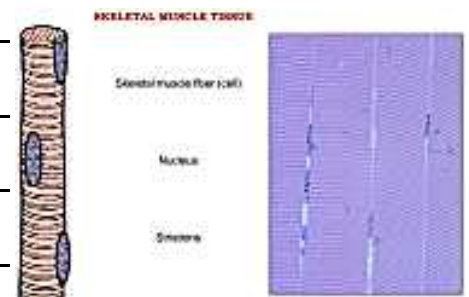
*Smooth* \_\_\_\_\_  
 \_\_\_\_\_  
 \_\_\_\_\_



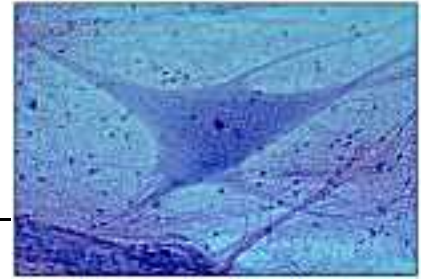
*Cardiac* (Use your text to investigate *intercalated disks*)  
 \_\_\_\_\_  
 \_\_\_\_\_  
 \_\_\_\_\_



*skeletal (striated)* \_\_\_\_\_  
 \_\_\_\_\_  
 \_\_\_\_\_  
 \_\_\_\_\_  
 \_\_\_\_\_



Navigate the CD to the Nervous Tissue, and investigate the following.  
Enter this information in your notes.

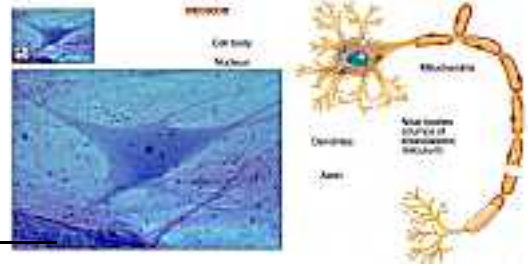


1. What are the two types of nervous system cells? \_\_\_\_\_  
\_\_\_\_\_

2. Click on the red Neuron from the CD to investigate the following:

*Cell Body* - Identify this part of the neuron.

*Dendrites* - Identify the dendrites and describe their function.



\_\_\_\_\_

\_\_\_\_\_

*Axon* - Identify the axon and describe its function. \_\_\_\_\_

\_\_\_\_\_

*Myelin* - Identify the Schwann cell and describe its function. \_\_\_\_\_

\_\_\_\_\_