

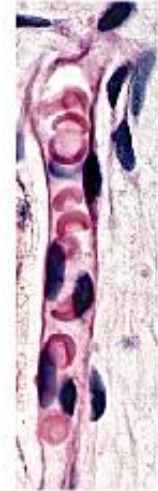
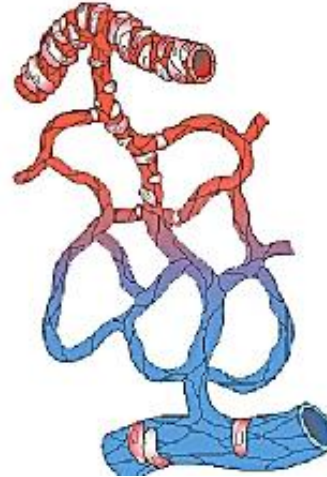
Cardiovascular System: Overview



- Click *Arteries and Arterioles*, and locate each of the following.
Arteriole (from the heart)
Smooth muscle
Precapillary sphincters
Capillary
Venule (to the heart)

ARTERIES AND ARTERIOLES

- From heart (arteriole)
- Smooth muscle
- Precapillary sphincters
- Capillary
- To heart (venule)



- From the *Arteries and Arterioles* screen, identify each of the following parts of an artery:
Tunica externa
Tunica media
Tunica interna
Lumen

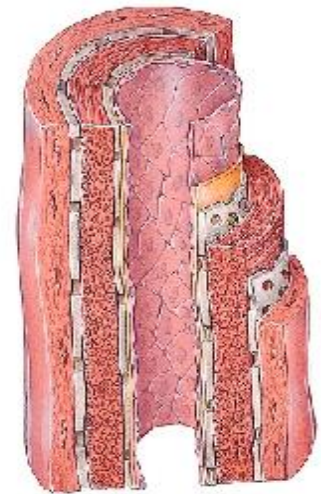
Artery

Tunica externa
(elastic and collagen fibers)

Tunica media
(smooth muscle tissue)

Tunica interna
(simple squamous epithelium tissue)

Lumen



- Click *Veins and Venules* and identify each of the following:
Tunica externa
Tunica media
Valve
Tunica interna
Lumen

Vein

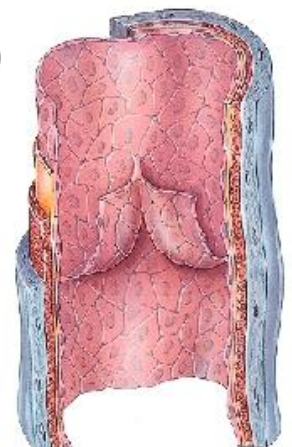
Tunica externa
(elastic and collagen fibers)

Tunica media
(smooth muscle tissue)

Valve

Tunica interna
(simple squamous epithelium tissue)

Lumen



4. Describe the function of the following:

artery _____

vein _____

arteriole _____

venule _____

5. Click *Capillaries* and identify each of the following:

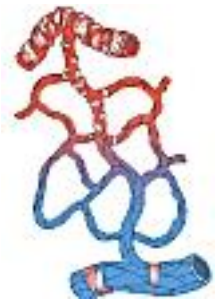
Arteriole

Capillary

Venule

Plasma

Red Blood Cell



a. Describe capillary function. _____
