

Cardiac Muscle

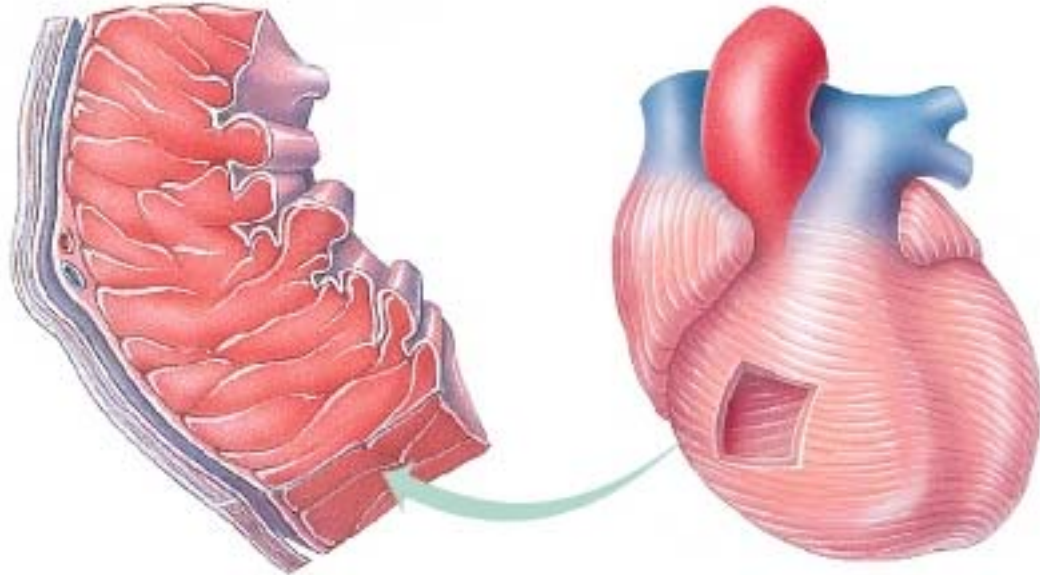
Directions:

- a. Click the "Contents" button,
- b. Open the Cardiovascular System File,
- c. Click Anatomy Overviews,
- d. Click Cardiac Muscle



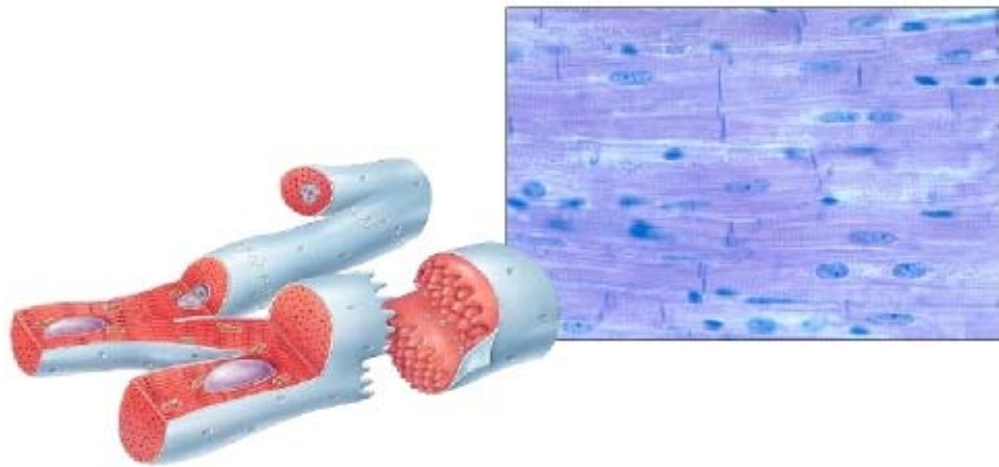
1. Identify each of the following:

- a. Myocardium
- b. Pericardium
- c. Endocardium



2. Follow the *myocardium* link and identify each of the following components of cardiac tissue.

- a. Nucleus of Cardiac Muscle Fiber
- b. Intercalated Discs
- c. Striations
- d. Cardiac Muscle Fiber (cell)
- e. Gap Junctions



- f. Describe how cardiac muscle fibers form "conductive and contractile networks."
