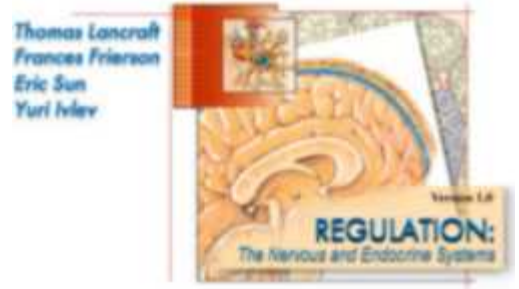


# Anatomy Overview: Hormones

## Directions:

- a. Click the "Contents" button,
- b. Open the Endocrine System File,
- c. Click Anatomy Overviews,
- d. Click Hormones



1. a. How do hormones affect long-term coordination of body activities?

---



---

b. In what ways are hormones distinguished from each other?

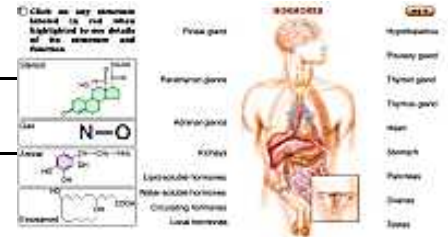
---



---



---

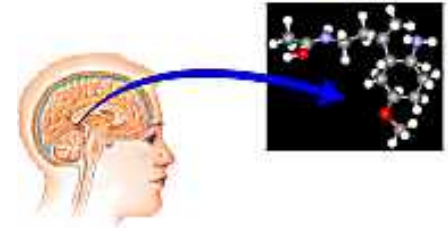


2. a. What stimulates Parathyroid Hormone secretion?

---



---



b. Bone osteoclasts are one PTH target. Describe the affect of PTH on these cells, and the corresponding affect on body homeostasis.

---



---

c. Kidney nephrons are also PTH targets. Describe the affect of PTH on these structures, and the corresponding affect on body homeostasis.

---



---



---

3. What are the functions of hypothalamic *Releasing Hormones*?

\_\_\_\_\_

4. What are the functions of *Antidiuretic Hormone (ADH)*

\_\_\_\_\_

\_\_\_\_\_

5. What are the functions of each of the following pituitary hormones?

a. *Human Growth Hormone (hGH)*

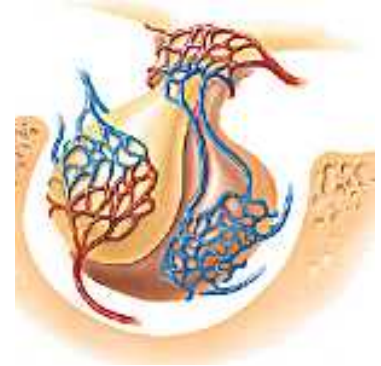
\_\_\_\_\_

b. *Thyroid Stimulating Hormone (TSH)*

\_\_\_\_\_

c. *Adrenocorticotrophic Hormone (ACTH)*

\_\_\_\_\_

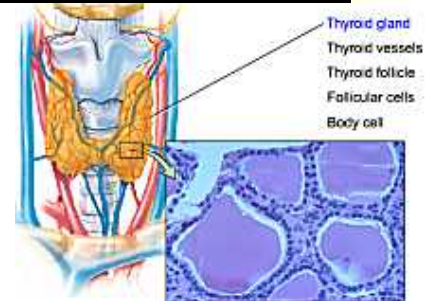


6. Describe the functions of *thyroid hormones* (T3 and T4).

\_\_\_\_\_

\_\_\_\_\_

\_\_\_\_\_



7. Pancreatic alpha cells secrete *glucagon*, while the beta cells secrete *insulin*. Describe the functions of these hormones.

a. *Glucagon*

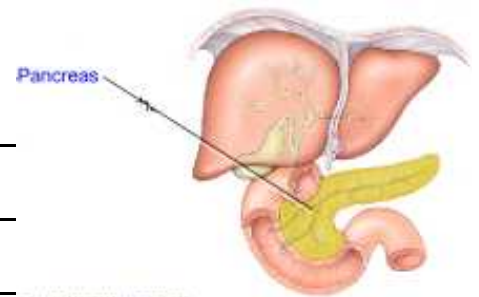
\_\_\_\_\_

\_\_\_\_\_

b. *Insulin*

\_\_\_\_\_

\_\_\_\_\_



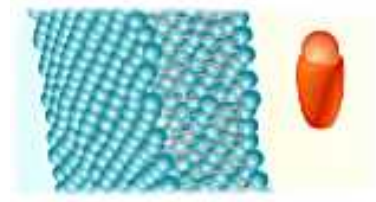
8. How do *lipid soluble hormones* work to alter cell function?

---

---

---

LIPID-SOLUBLE HORMONES



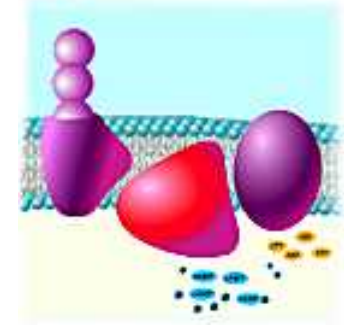
9. How do *water soluble hormones* work to alter cell function? (This includes an explanation of "second messenger" function.)

---

---

---

WATER-SOLUBLE HORMONES



10. Explain how *circulating hormones* affect their targets.

---

---

---

---

CIRCULATING HORMONES

