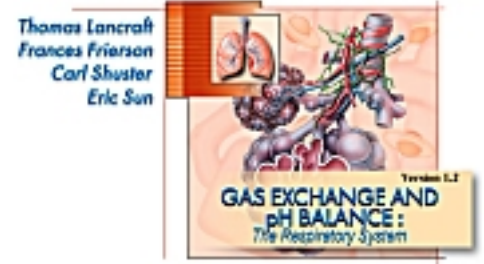


Respiratory Tissue

Directions:

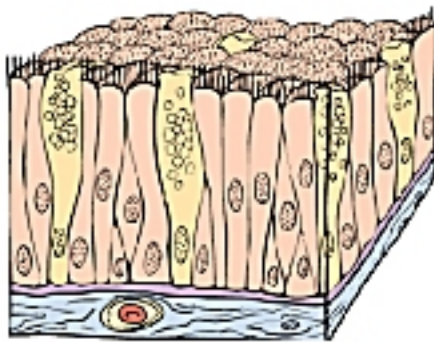
- a. Click the "Contents" button,
- b. Open the *Respiratory System* File,
- c. Click *Anatomy Overviews*,
- d. Click *Respiratory Tissue*



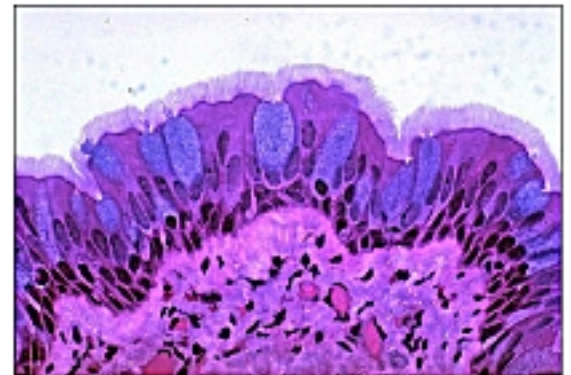
1. Name three vital roles of respiratory tissues.



2. a. From the main Respiratory Tissues page, click *Respiratory Epithelium*. Identify each of the following:



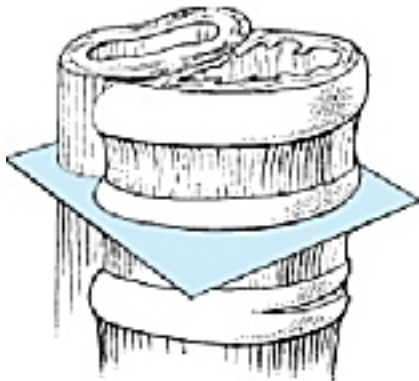
- Lumen*
- Cilia*
- Ciliated Columnar Cells*
- Goblet Cells*
- Basal Cells*
- Basement Membrane*
- Connective Tissue*



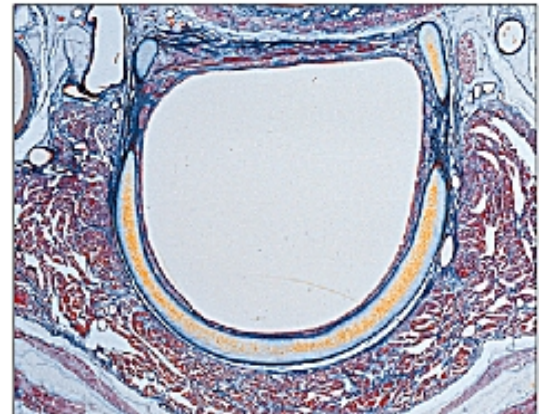
b. Classify respiratory epithelia. _____

c. Describe functions of the respiratory epithelium. _____

3. a. Back on the main Respiratory Tissues page, click the *trachea*. Identify each of the following:



- Esophagus*
- Trachea Lumen*
- Hyaline Cartilage*
- Respiratory Epithelium*



b. What lines the trachea? _____

c. What is the function of the hyaline cartilage? _____

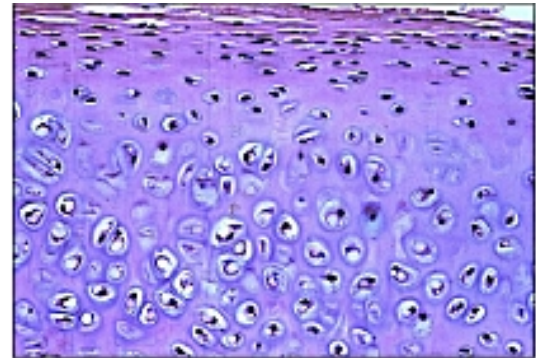
4. From the main Respiratory Tissues page, click the *hyaline cartilage*. Identify each of the following:



Perichondrium

Ground Substance

Lacunae Containing Chondrocytes



5. Again, from the main Respiratory Tissues page, click the *bronchus*. Identify each of the following:

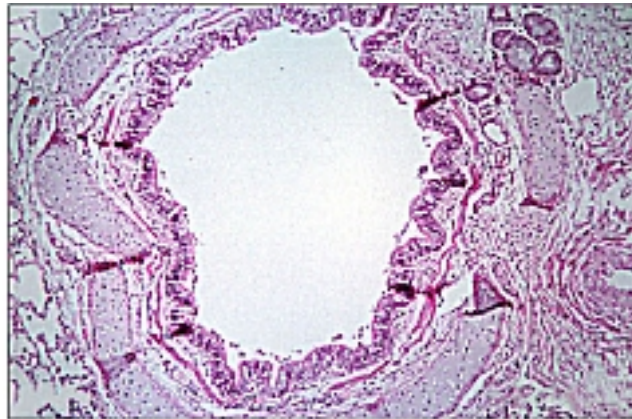
Lumen

Smooth Muscle

Hyaline Cartilage

Respiratory Epithelium

Alveoli



6. a. Click the *bronchiole* on the main Respiratory Tissues page and identify each of the following:

Bronchiole Lumen

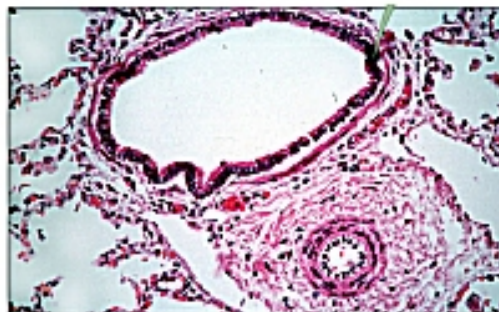
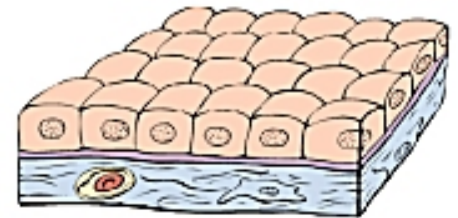
Alveoli

Simple Cuboidal Cell Nuclei

Simple Cuboidal Epithelium

Smooth Muscle

Elastic Connective Tissue



b. What is the function of the smooth muscle in the bronchiole walls? _____

7. One last time from the main Respiratory Tissues page, click the *alveolus*. Identify each of the following:



Simple Squamous Epithelium

Bronchiole

Alveolar Ducts

Alveoli

Simple Squamous Cell Nuclei

