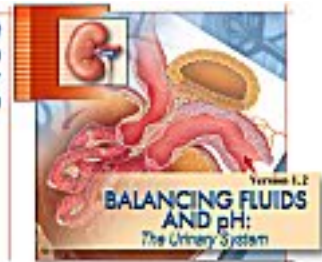


# Urinary System Overview

Thomas Lancraft  
Frances Frierson  
Carl Shuster  
Eric Sun



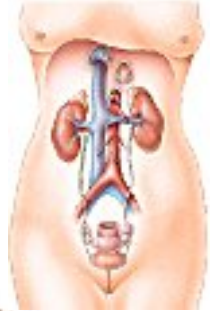
## Directions:

- Click the "Contents" button.
- Open the *Urinary System* File.
- Click *Anatomy Overviews*.
- Click *Urinary System Overview*.

1. Describe the important role of the *Urinary System*. \_\_\_\_\_

---

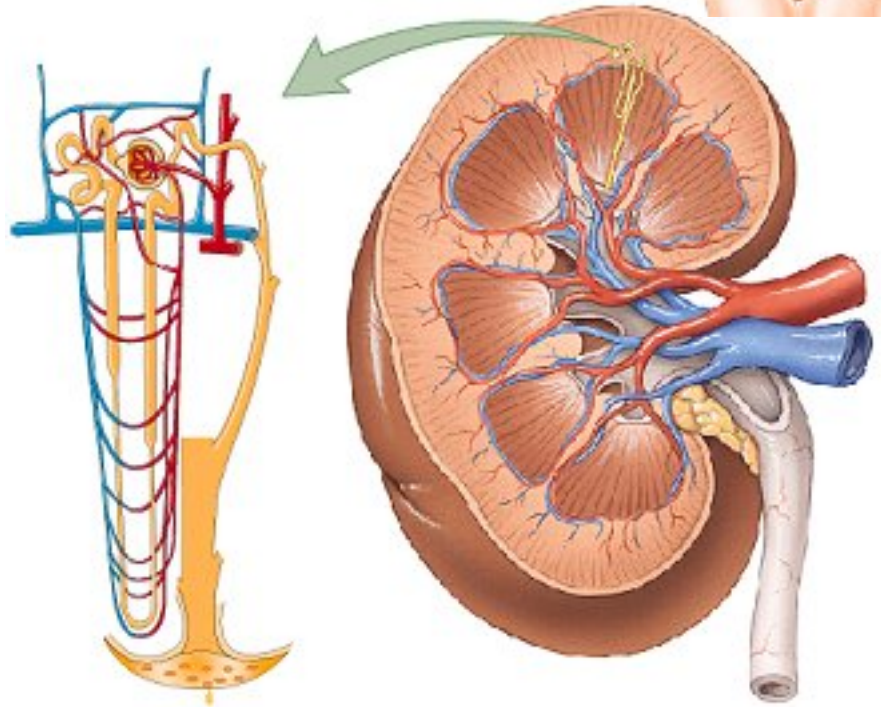
---



2. From the main Urinary System page, click on *Blood Supply of the Kidneys*.

a. Identify each of the following:

- *Renal artery*
- *Segmental arteries*
- *Interlobar arteries*
- *Arcuate arteries*
- *Interlobular arteries*
- *Afferent arterioles*
- *Glomerular capillaries*
- *Efferent arterioles*
- *Peritubular capillaries* (vasa recta)
- *Renal vein*



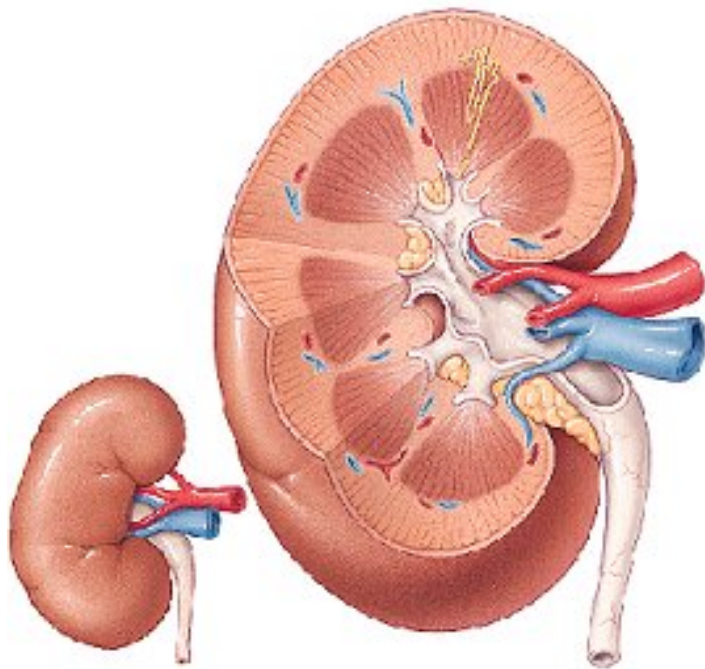
b. What are the general functions of the *kidney*?

---

---

---

3. a. Return to the main Urinary System page and click on the *Kidneys*. Identify each of the following structures. Note that these are listed in order of urine flow.



Nephron

Sequence  
of urine flow:

Collecting duct

Papillary duct

Renal calyx

Renal pelvis

Ureter

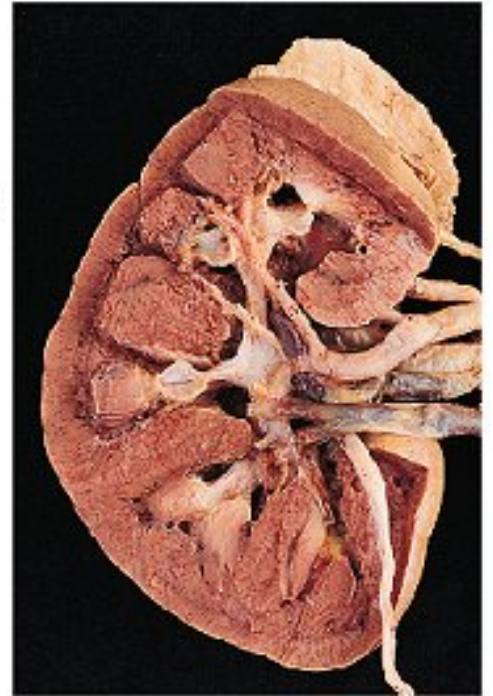
Renal artery

Renal vein

Renal cortex

Renal medulla

Renal capsule



- b. Describe the kidney's role relative to the following:

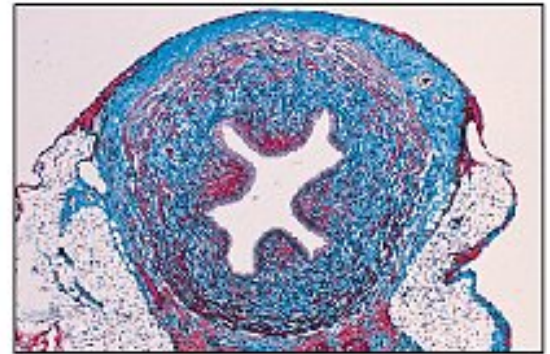
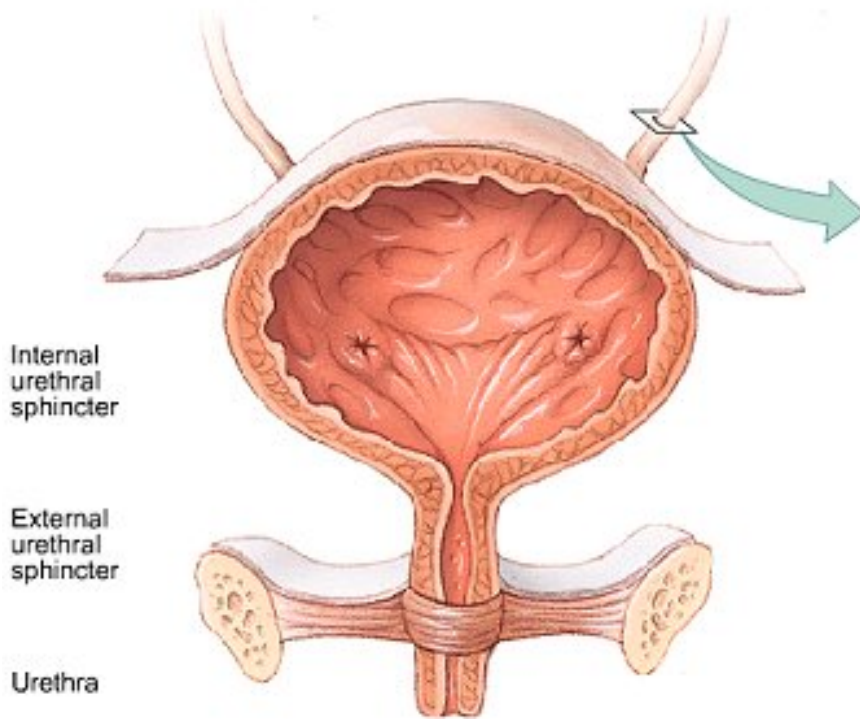
i. water-soluble substance blood levels - \_\_\_\_\_

ii. blood volume - \_\_\_\_\_

iii. pH - \_\_\_\_\_

iv. hormones - \_\_\_\_\_

4.a. Return to the main Urinary System page. This time investigate the ureters, urinary bladder, and urethra. Identify each of the following:



Ureters

Urinary bladder:

Lumen

Muscularis layer (detrusor muscle)

Mucosal layer (transitional epithelium)

Peritoneum

Adventitia

b. Describe the function of the:

i. *ureters* \_\_\_\_\_

ii. *urinary bladder* \_\_\_\_\_

iii. *urethra* \_\_\_\_\_