

Cardiovascular System: Overview



Directions:

- Click the "Contents" button,
- Open the Cardiovascular System File,
- Click Anatomy Overviews,
- Click Cardiovascular System: Overview

- Click *Blood* and identify each of following. Know each by sight.

Plasma

Erythrocytes

Platelets

White blood cells

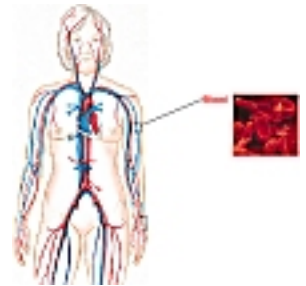
Monocytes

Neutrophils

Eosinophils

Basophils

Lymphocytes



- Describe four general blood functions:

1. Transport _____

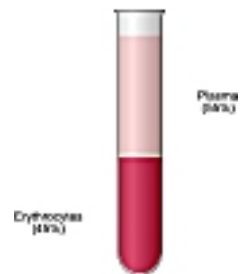
2. pH _____

3. Protection following injury _____

4. Protection from disease _____

- Follow the *Plasma* link for additional information.

1. What is the general function of plasma proteins, *albumin*, *globulin*, and *fibrinogen*?



- More specifically, what is the function of these plasma proteins:

albumin _____

globulin _____

fibrinogen _____

3. How much of blood volume is:

blood proteins _____

water _____

other solutes _____

c. Follow the *Erythrocyte* link for additional information.

What is the role of the *heme* molecules? _____

Explain one method of carbon dioxide transport (there is another). _____



7. Describe the functions of *White blood cells*

Monocytes _____

Neutrophils _____

Eosinophils _____

Basophils _____

Lymphocytes (distinguish B from T lymphocytes) _____

8. Describe the functions of platelets
