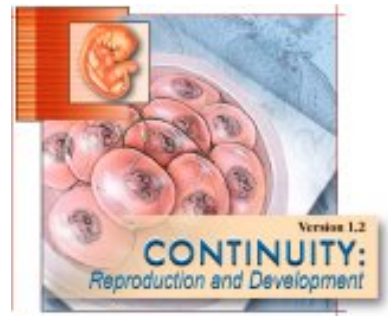


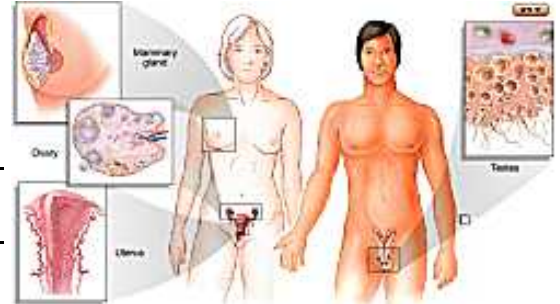
Reproductive System: Histology Overview

Directions:

- a. Click the "Contents" button.
- b. Open the *Reproductive System* File.
- c. Click *Anatomy Overviews*.
- d. Click *Reproductive System Histology Overview*.



1. What are the primary functions of male and female reproductive tissues?

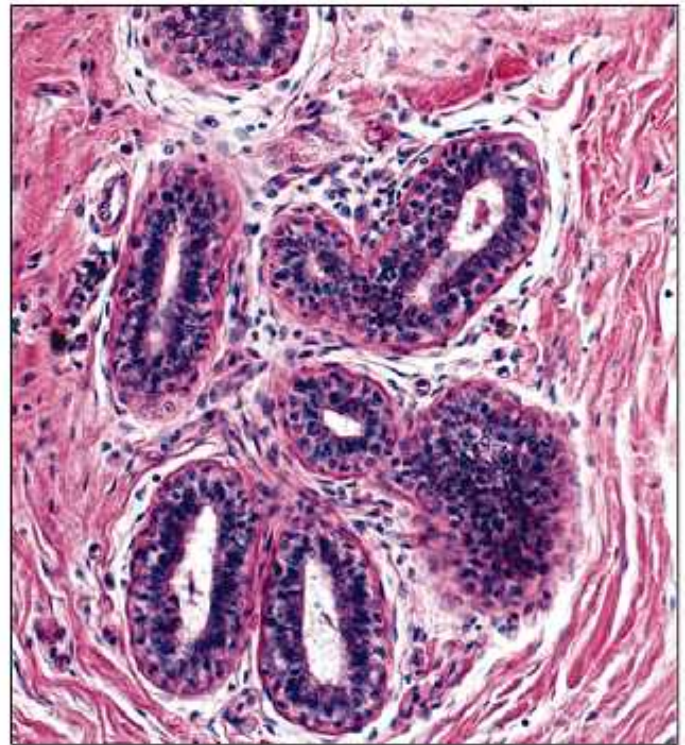


2. Click the *Mammary Gland* to investigate its histology.

- a. Identify each of the following:



- Myoepithelial cells
- Alveolar gland cells
- Mammary duct
- Lactiferous sinus
- Lactiferous duct
- Nipple
- Lobule containing alveoli (milk producing glands)



- b. Describe the function of:

alveolar gland cells - _____

myoepithelial cells - _____

3. Click the *Ovary* to investigate its histology.

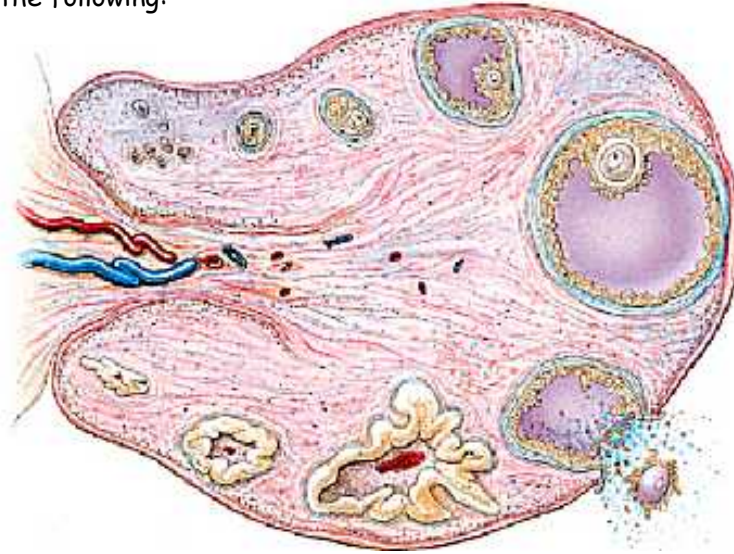
a. Identify each of the following:

Primary follicle

Primordial follicles

Corpus albicans

Corpus luteum



Secondary follicle

Mature (Graafian) follicle

Ruptured follicle

Secondary oocyte

b. Describe follicle structure. _____

c. Describe follicle hormonal function. _____

4. From this last screen, *Ovary Histology*, click the *Primary or Primordial Follicle* for further investigation.

a. Identify each of the following:

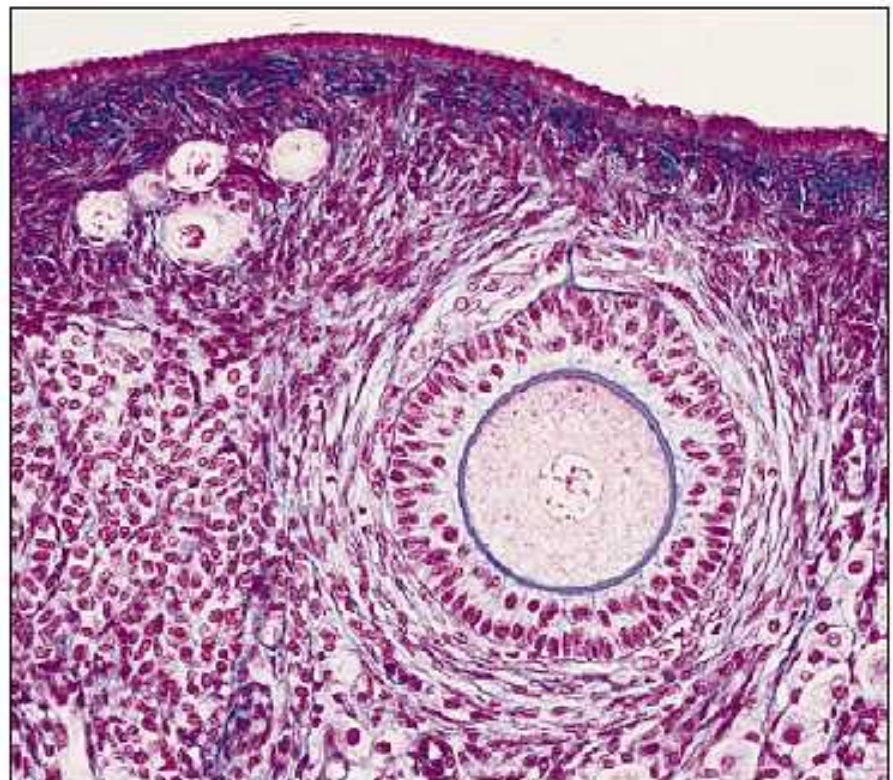
Primordial follicles

Primary follicles

Primary oocyte

Zona pellucida

Primary follicle granulosa cells

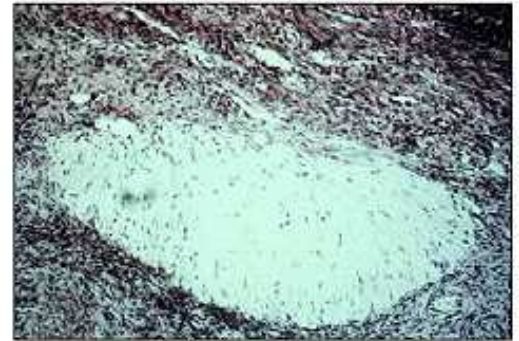


b. Describe the relationship between primordial follicles and primary follicles. _____

5. Return to the Ovary Histology page and investigate the *Corpus Albicans* and *Corpus Luteum*.

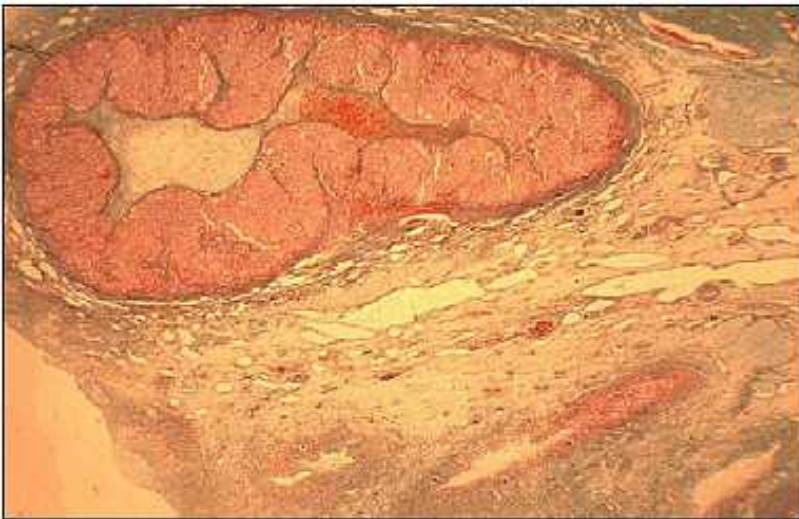
a. Identify each of the following:

Corpus albicans



Corpus luteum

Blood clot



b. What happens to the corpus luteum following ovulation? _____

c. Contrast the fate of the corpus luteum with and without fertilization occurring. _____

6. Return again to the Ovary Histology page. This time investigate the *Secondary Follicle*.

a. Identify each of the following:

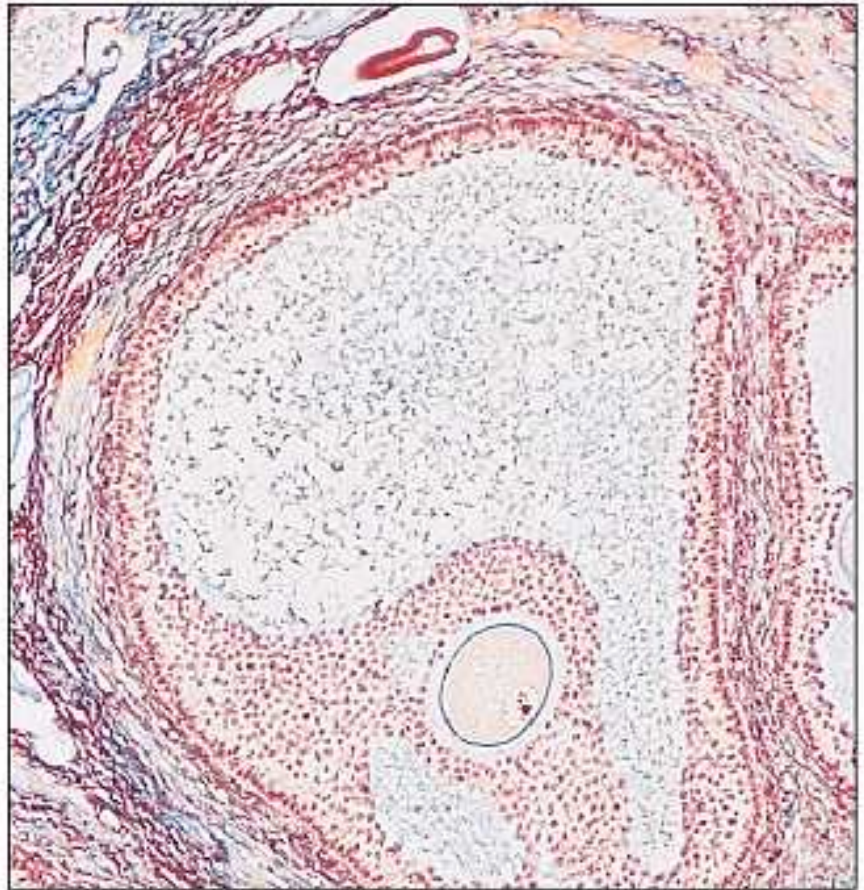
Secondary follicle
granulosa cells

Antrum filled with
follicular fluid

Corona radiata

Zona pellucida

Primary oocyte



b. Describe events and developments within the secondary follicle. _____

7. One last time, return to the Ovary Histology page and investigate the *Mature (Graafian) Follicle*.

a. Identify each of the following:

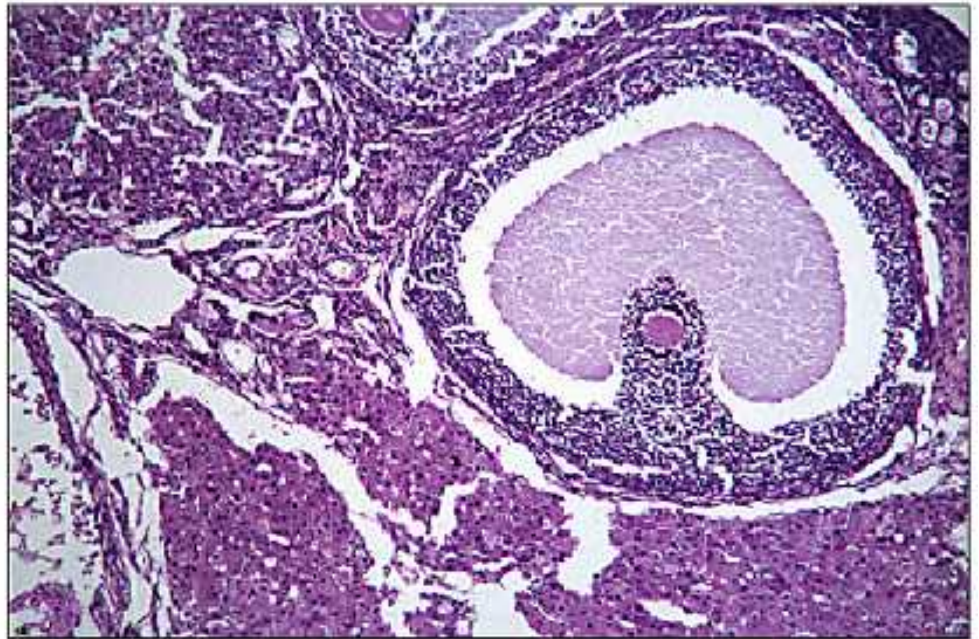
Graafian follicle

Antrum

Corona radiata

Zona pellucida

Secondary oocyte



b. What happens to the primary oocyte with a mature follicle? _____

c. What happens to the secondary oocyte during ovulation? _____

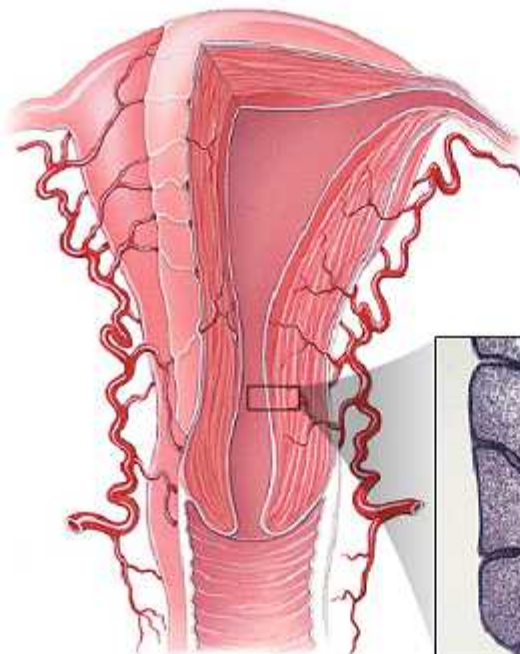
8. Return all the way back to the main Reproductive System Histology Overview page. Your next exploration is the *Uterus*.

a. Identify each of the following:

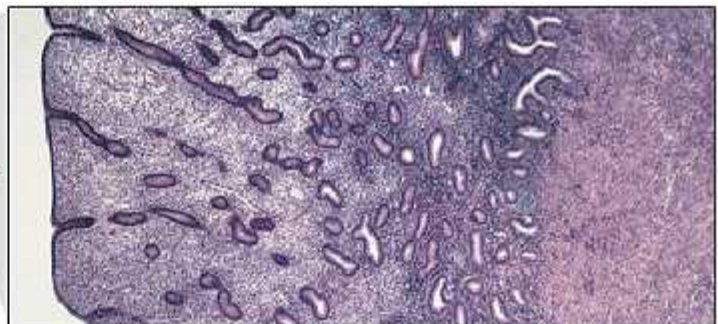
Uterine arteries

Cervix

Vagina



Uterine cavity
Simple columnar epithelium
Endometrial glands
Endometrium
 Stratum functionalis
 Stratum basalis
Myometrium
Perimetrium



b. Define or describe the function of:

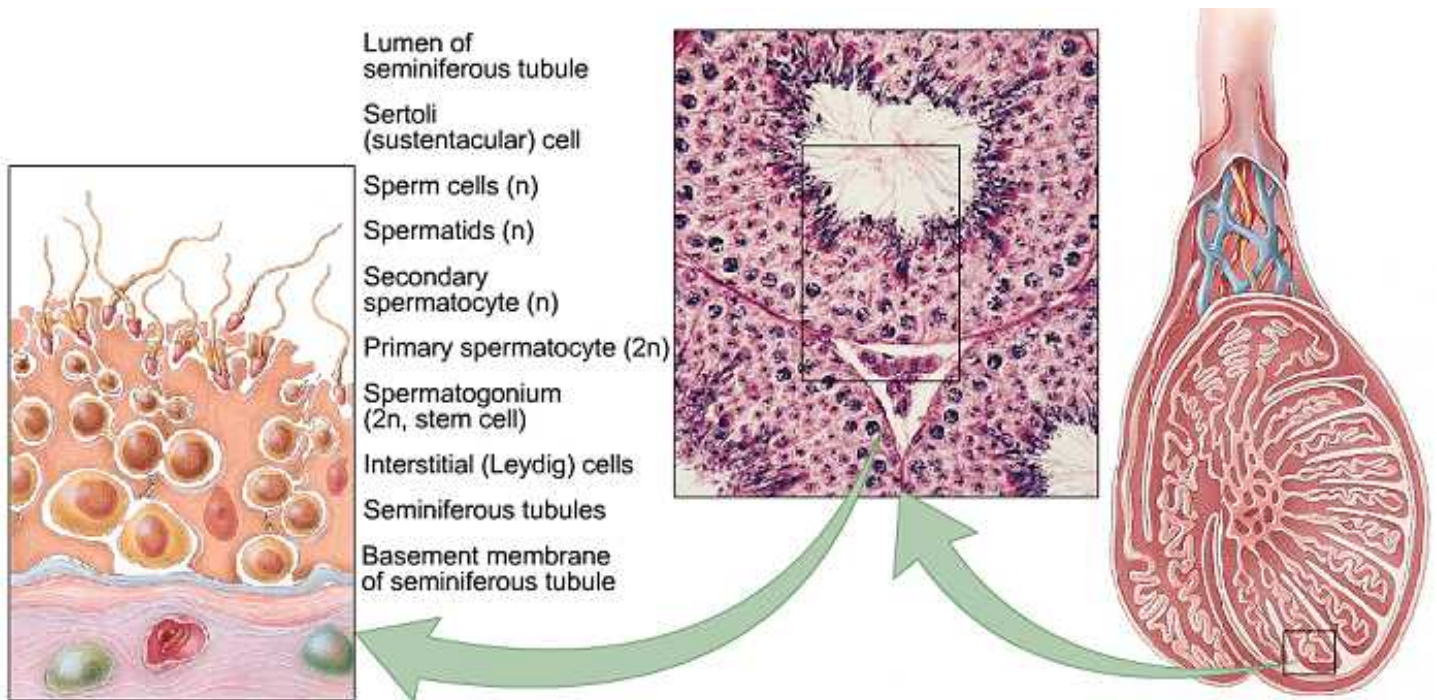
endometrium - _____

stratum functionalis - _____

myometrial smooth muscle - _____

9. With one last trip back to the main Reproductive System Histology homepage, complete this module by investigating *Testis* histology.

a. Identify each of the following:



Note the (n) or (2n) designation in some of the cells identified above. This indicates their chromosome number; whether or not the chromosomes are paired, known as diploid, or if the chromosomes are singular, known as haploid.

b. What is the function(s) of the following cells?

Spermatogenic cells - _____

Interstitial or Leydig Cells - _____

Sertoli cells - _____
