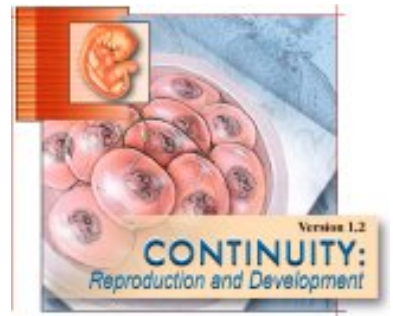


Reproductive System: Overview

Directions:

- Click the "Contents" button.
- Open the *Reproductive System* File.
- Click *Anatomy Overviews*.
- Click *Reproductive System Overview*.

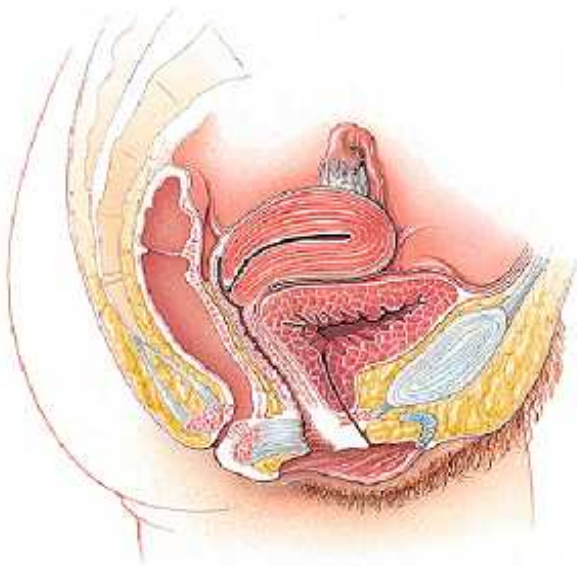


The male and female reproductive systems work together to produce offspring. The female reproductive system also supports embryonic and fetal development. Click *Female Gross Anatomy* to further investigate.

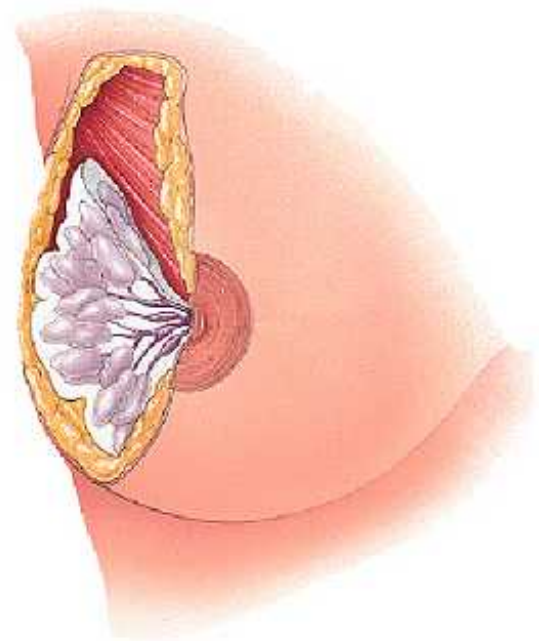
- Describe the female reproductive system's role relative to gamete and hormone production.
-



- Identify each of the following structures:



- Ovary
- Uterine (Fallopian) tube
- Uterus
- Cervix
- Vagina
- Pubic symphysis
- Clitoris
- Urinary bladder
- Urethra
- Labia
- Mons pubis
- Mammary gland
- Nipple



3. a. Return to the Reproductive System main homepage. Click *Ovarian Hormones* to continue your exploration. Describe the function of the following hormones:

estrogen - _____

progesterone - _____

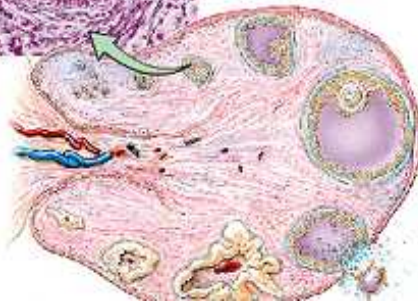
relaxin - _____

inhibin - _____

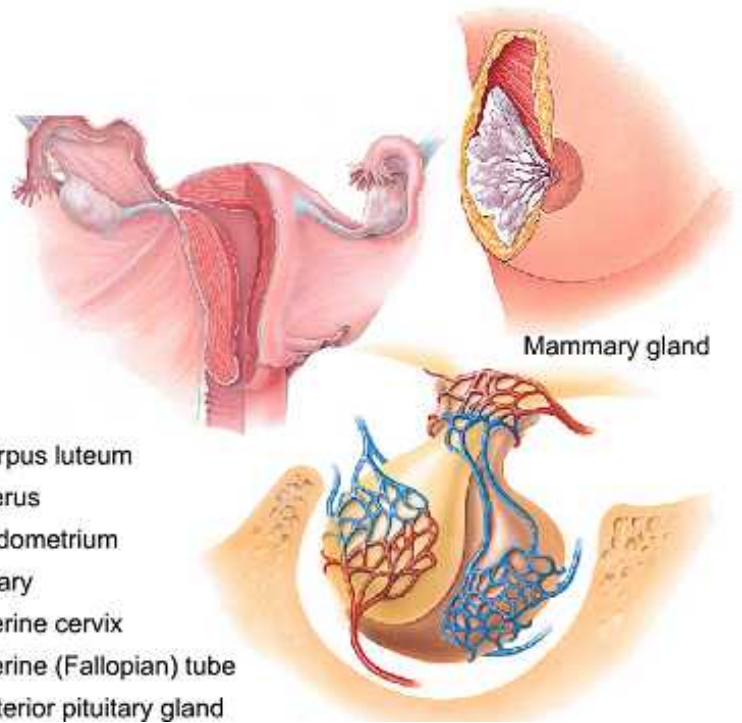
b. Identify the following histological and anatomical structures.



Germinal epithelium
Ovarian cortex
Ovarian follicle
Follicle cells
Oocyte



Corpus luteum
Uterus
Endometrium
Ovary
Uterine cervix
Uterine (Fallopian) tube
Anterior pituitary gland



Mammary gland

4. Return to the main Reproduction System homepage. Click the *Anterior Pituitary Reproductive Hormones* to further investigate.

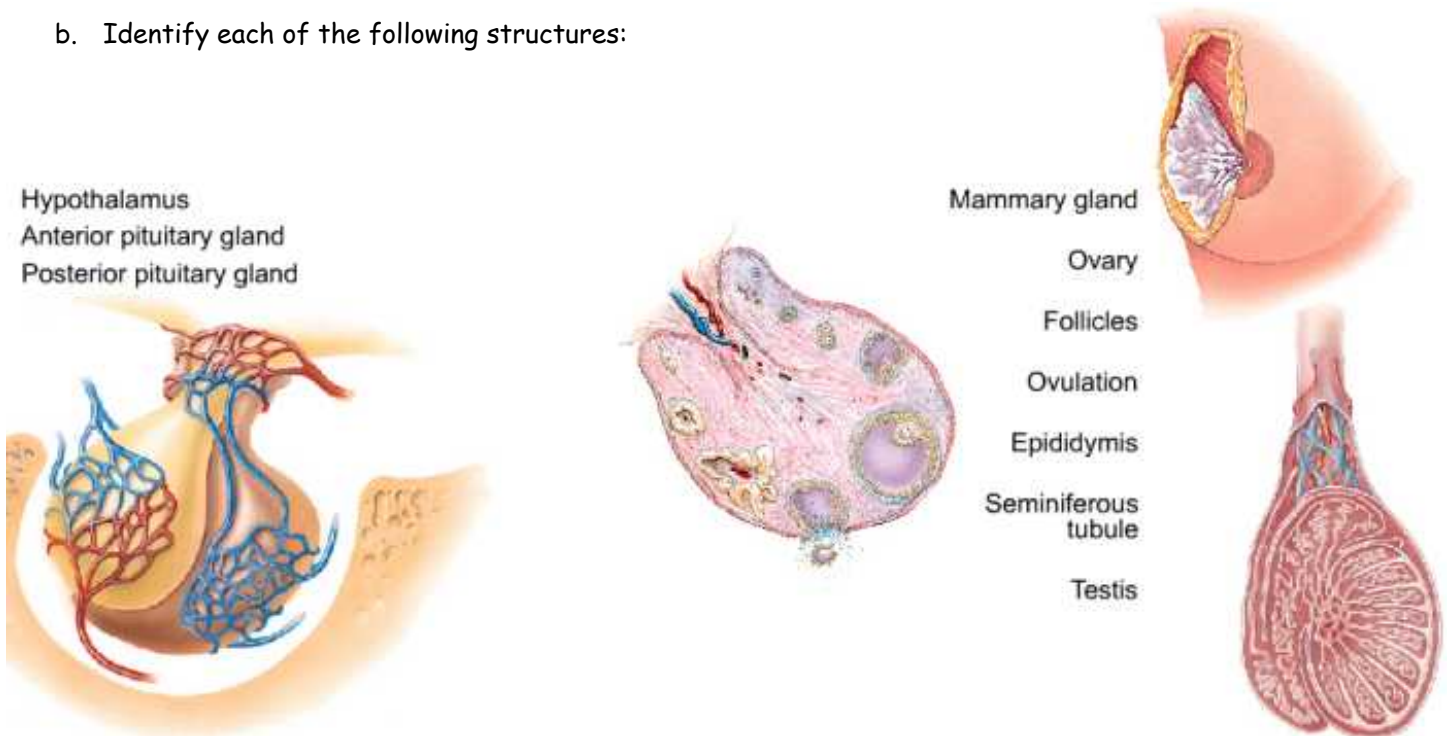
a. Describe the secretion and function of the following hormones.

Follicle-Stimulating Hormones (FSH) - _____

Luteinizing Hormone (LH) - _____

Prolactin - _____

b. Identify each of the following structures:



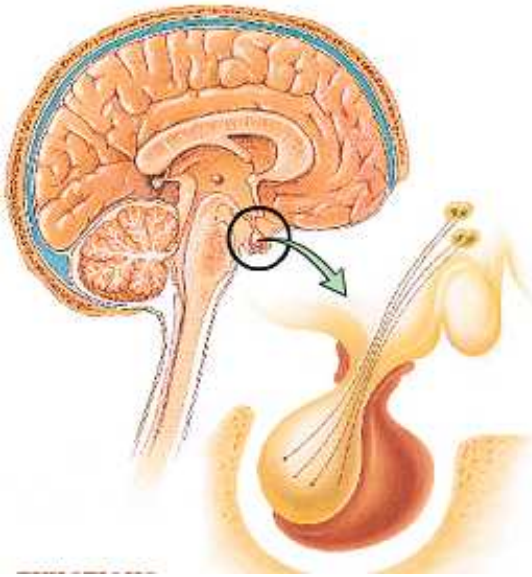
5. Return to the main Reproductive System homepage. This time, click on *Hypothalamic Reproductive Hormones*.

a. Describe the function of the following hormones:

Gonadotropin Releasing Hormone (GnRH) - _____

Oxytocin - _____

b. Identify the following:



- Nipple
- Mammary gland
- Hypothalamus
- Pituitary gland:
 - Anterior lobe
 - Posterior lobe
- Infundibulum
- Neurosecretory cells
- Fetus
- Uterine wall



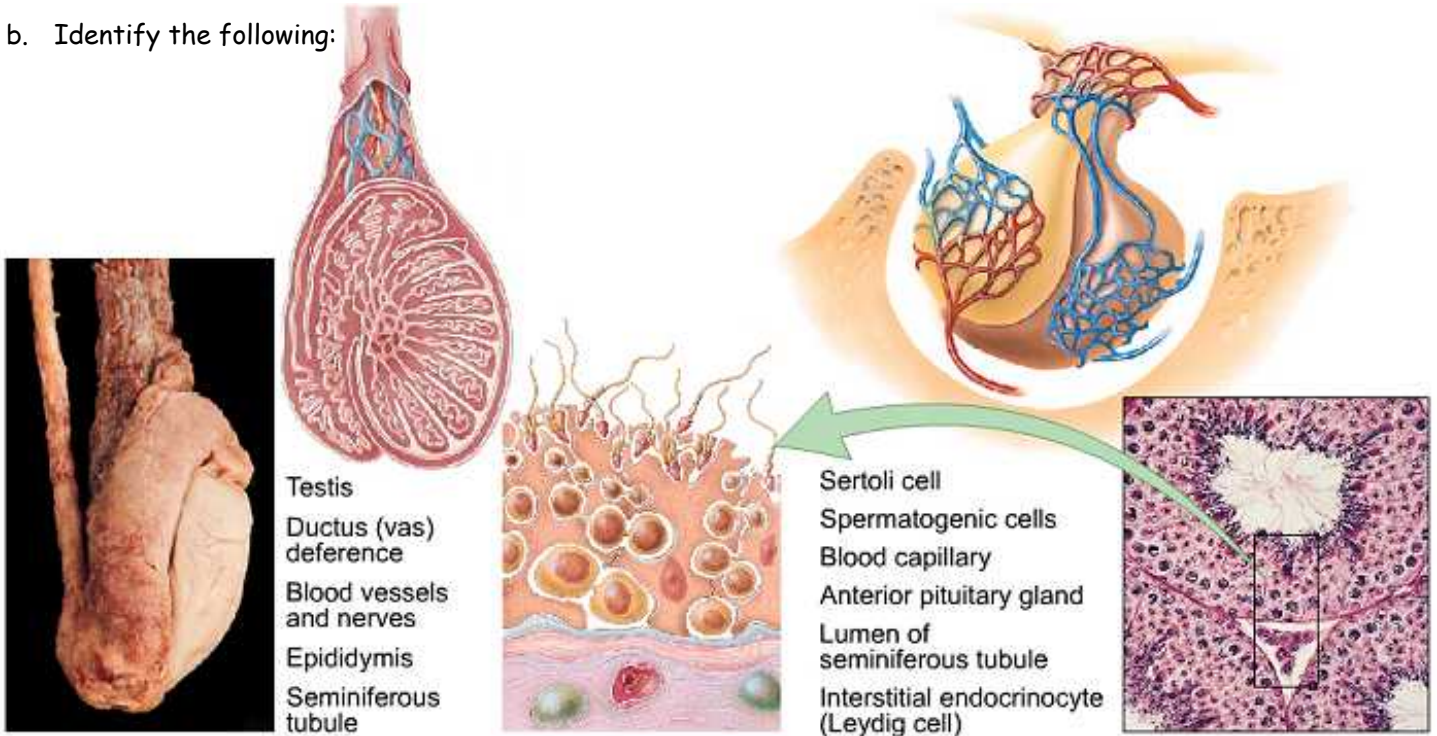
6. Return again to the Reproductive System homepage and click *Testicular Hormones*.

a. Describe the function of the following hormones in males:

testosterone - _____

inhibin - _____

b. Identify the following:



- Testis
- Ductus (vas) deference
- Blood vessels and nerves
- Epididymis
- Seminiferous tubule

- Sertoli cell
- Spermatogenic cells
- Blood capillary
- Anterior pituitary gland
- Lumen of seminiferous tubule
- Interstitial endocrinocyte (Leydig cell)

7. We'll finish up with one last trip back to the main Reproductive System homepage. Your last investigation in this module is of *Male Gross Anatomy*.

a. Identify each of the following:



- Testes
- Scrotum
- Penis
- Ductus (vas) deferens
- Epididymis
- Seminal vesicle
- Prostate gland
- Ejaculatory duct
- Urethra

