

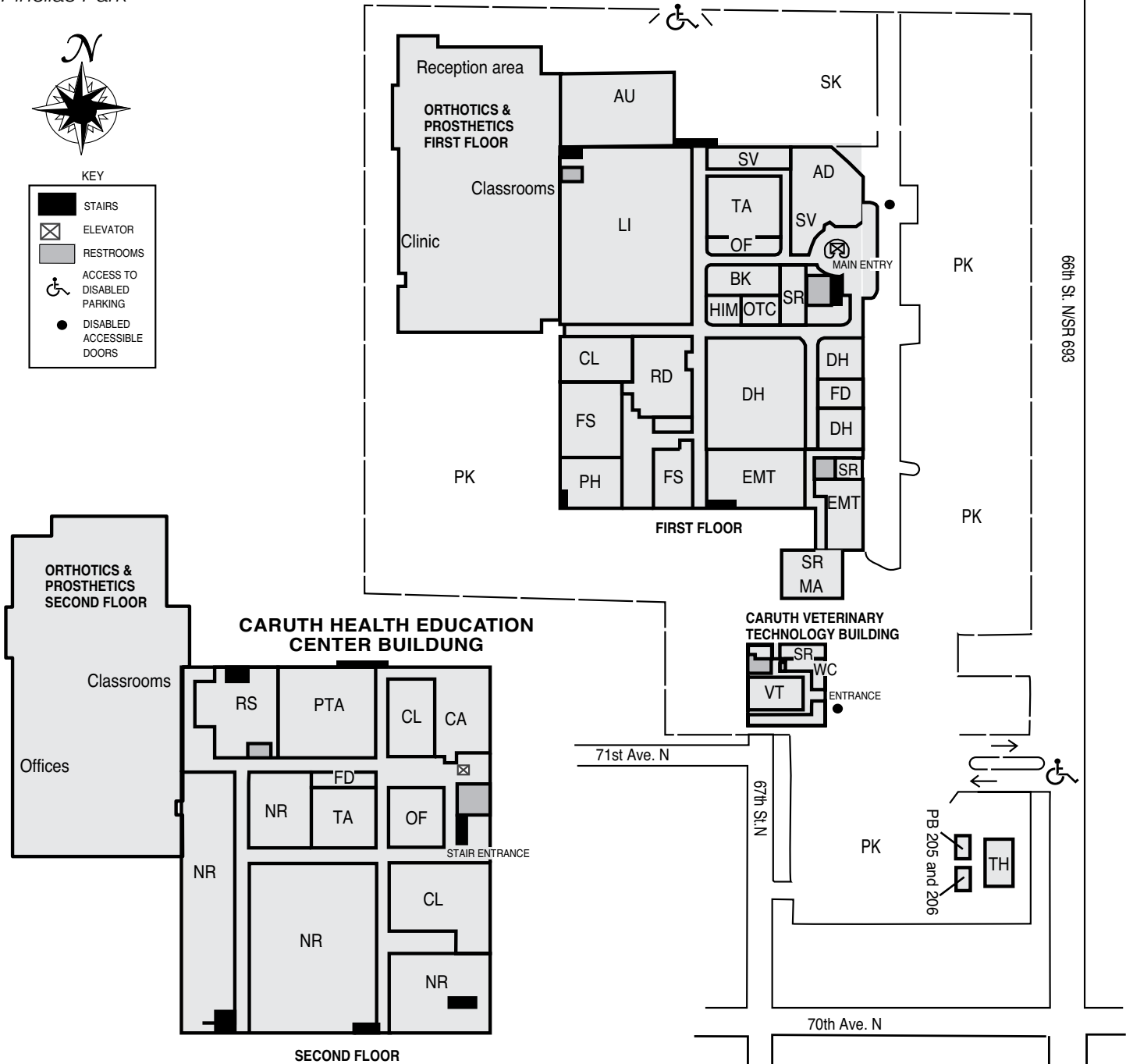
Caruth Health Education Center

Caruth Health Education Center
 7200 66th St. N
 Pinellas Park

Park Blvd./74th Ave. N/SR 694



KEY



Caruth Health Education Center Room Codes

- | | | |
|-------------------------------------|------------------------------------|----------------------------|
| AD - Administration | LI - Library | SK - Staff parking |
| AU - Auditorium | MA - Maintenance | SR - Storage |
| BK - Bookstore | NR - Nursing | SV - Student Services |
| CA - Cafeteria | OF - Offices | TA - Teaching Auditorium |
| CL - Classrooms | OTC - OSSD testing center | TH - Thrift Store |
| DH - Dental Hygiene | PB - Portables 205 and 206 | VT - Veterinary Technology |
| EMT - Emergency Medical Technology | PH - Physical Plant/Receiving | WC - Wellness Center |
| FD - Faculty development | PK - Student parking | |
| FS - Funeral Services | PTA - Physical Therapist assistant | |
| HIM - Health Information Management | RS - Respiratory Therapy | |